

TOSHIBA

For household use

Toshiba Mechanical Rice Cooker / Warmer Instruction Manual

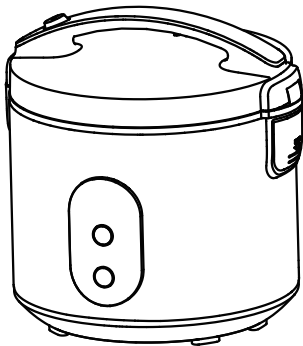
Model

1.0L Type

RC-10JRNH

1.8L Type

RC-18JRNH



Contents

IMPORTANT SAFEGUARDS	1
PRODUCT SPECIFICATION	2
GETTING STARTED	3
OPERATION INSTRUCTIONS.....	4
PRECAUTIONS	5
TROUBLE SHOOTING	6

- Thank you for purchasing Toshiba rice cooker. All pictures in this manual are subject to material objects, and are only used for function display reference.
- Please read the instruction manual and use it correctly for your own safety. Before using, please read “Safeguards” and “Please follow the instructions”.
- After reading, please keep the instruction manual at a place where any person who is going to use this cooker can find and see it.

IMPORTANT SAFEGUARDS



Caution

When using electrical appliances, basic safety precautions should be followed including the following:



1. This appliance is not intended for use by persons (including children) with reduced physical, sensory or mental capabilities, or lack of experience and knowledge, unless they have been given supervision or instruction concerning use of the appliance by a person responsible for their safety.
2. This appliance is intended to be used in household and similar applications such as:
 - Staff kitchen areas in shops, office and other working environments;



- farm houses;
 - by clients in hotels, motels and other residential type environments;
 - bed and breakfast type environments;
3. If the supply cord is damaged, it must be replaced by a special cord or assembly available from the manufacture or its service agent.
 4. Please turn off and unplug the appliance before cleaning, maintenance or relocation and whenever it is not in use.
 5. Warning: Misuse may cause potential injury.
 6. Warning: Avoid spillage on the connector.



1. This appliance is for household use only. Do not use outdoors.
2. Children should be supervised to ensure that they do not play with the appliance.



3. Do not immerse any part of the appliance in water or other liquid.
4. The heating element surface is subject to residual heat after use, do not touch.

PRODUCT SPECIFICATION

Thank you for purchasing the TOSHIBA rice cooker, please read this instruction manual carefully before using. Keep it cautiously after reading for future reference.

At first use, there might be an odor from plastic, etc. This odor will disappear after using .



Caution

All pictures in this manual are subject to material objects, and are only used for function display reference.

COVER PLATE

Removeable coverplate

Non-removeable coverplate



INNER POT

Never heat the inner pot on other stoves to avoid deformation.

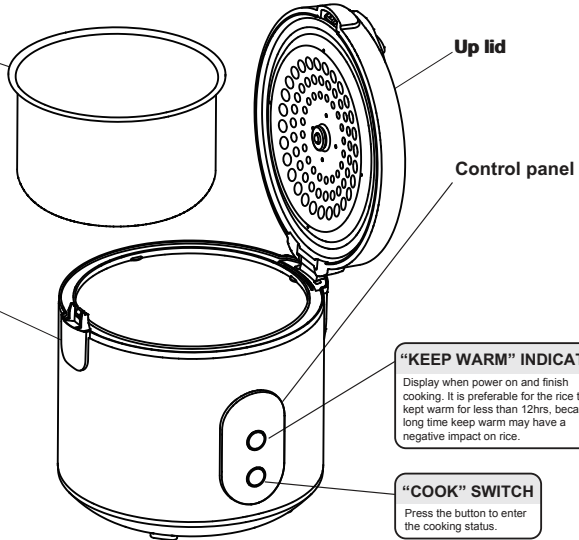
Take the inner pot out of the electric rice cooker, wash it with household liquefied detergent and rinse with fresh water and then wipe it dry with soft cloth. Never use a metal brush or other harsh tools to wash in order to avoid damage to the inner pot.

According to the frequency of use, the inner pot may be a phenomenon of discoloration or markings, but does not affect the health and use of.

WATER HOLDER







Take out the water holder, pour out the rice water, and replace it after cleaning. Attention to remove the action should be slow to prevent water spills.



“KEEP WARM” INDICATOR
Display when power on and finish cooking. It is preferable for the rice to be kept warm for less than 12hrs, because long time keep warm may have a negative impact on rice.

“COOK” SWITCH
Press the button to enter the cooking status.

Model	Rated Voltage	Rated Power(W)	Cooking Capacity(L)	Cooking Method	Rice Quantity (Cup)	Body Dimension(mm)	Body Weight(kg)
RC-10JRNH	220-240V~50/60Hz	500-595	1.0	Heating	1-5.5	255*240*254	2.2
RC-18JRNH		650-774	1.8		2-10	280*263*289	2.8
Accessories	Spoon Spatula 	Measuring Cup 	Power Cord 	Steamer 			

GETTING STARTED

1. Before using the appliance for the first time, clean the parts of the rice cooker thoroughly. Make sure all the parts are completely dry before you start using the appliance.
2. To prevent the damage of the non-stick coating in the inner pot, use a separate container to wash the rice.
3. Measure the rice using the measuring cup provided. Do not exceed the quantities indicated on the inside of the inner pot.
4. Place the washed rice into the inner pot.
5. Add water to the level indicated on the scale inside the inner pot that corresponds to the number of cups of rice used.
6. Dry the outside of the inner pot.
7. Place the inner pot in the rice cooker.
8. Close the lid of the rice cooker until a 'click' sound is heard.
9. Plug in the power cord into the rice cooker and to the wall socket and switch on the mains.

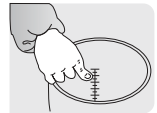
OPERATION INSTRUCTIONS

1 Rice measuring and washing

- The measuring cup is mainly used to measure the amount of rice. A flat cup of rice is 0.18L (approx.150g).
- Do not wash rice directly with the inner pot to avoid scratching its non-stick layer, distortion it due to collision or result in a lower heat efficiency due to poor contact with the electric heating plate.



2 Put washed rice into the inner pot and add water to the corresponding level (e.g., add water to high level "3" if 3 cups of rice are to be cooked), add or reduce the amount of water depending on your personal taste highest level.



3 Mop up the interior and exterior of the inner pot with dry cloth, place it into the cooker body. Turn the inner pot gently for several times to allow its bottom come into contact with the electric heating plate.

- No foreign matter can be allowed between inner pot and electric heating plate.
- Make sure the cover is properly closed, otherwise the cooking effect may be affected.



4 If necessary, put the steam case into the inner pot when cooking, then put the food into the steam case directly or in a tray.

5 Press down the cover until it snaps in place.



6 Cooking

The "WARM" lamp is illuminated after plugging into the outlet. The Rice Cooker are entering the cooking process until you have pressed the "COOK". Otherwise, the Rice Cooker will still in warming process (Please be sure that you have pressed the "Cooking" Otherwise, the Rice Cooker will still in warming process).

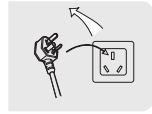
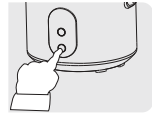
7 When cooking is finished, the cooking switch will pop up and a "Click" will be heard. At the same time, the cooking light will go out and keep warm light will go on.

Special Hint:

Rice is best served 15 minutes after cooking.

8 When filling bowl with rice, the attached spoon, not metal spoon, should be used to avoid scuffing the non-sticky coating of inner pot and causing exfoliation of coating at the same time, dry grain of cooked rice should be removed.

9 In order to keep cleanness and sanitation, please clean up the rice water in water holder after cooking.



STEAM FUNCTION (MANUAL CONTROL)

1 Add appropriate amount of water into the inner pot. The amount of water varies according to the quantity of food to be steamed. Ensure that the water level does not exceed the height of the steam case. Insert the steam case into the inner pot and place the food on the plate or on the steam case.

2 Press "COOK" button to start the cooking. The light indicator will switch to "COOK"

3 If steam food together with rice cooking, "WARM" indicator will light up after rice cooking finished

4 If steam food without rice cooking (use steam function only), when steam food is fully cooked, please press "WARM" button manually, otherwise the rice cooker won't change to "WARM" automatically.

NOTE: To ensure even steaming, the food should be spread out evenly and should not be piled up.

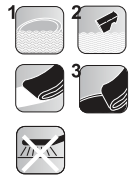
PRECAUTIONS

- 1 The inner pot cannot be heated on any other furnace, otherwise it can be deformed easily .
- 2 The cooked rice start to keep warm, it is not suitable for eating immediately and it will more soft and delicious if let it stewing for 15 minutes.
- 3 The time of keeping warm don't exceed 12 hours in order to avoid the cooked rice off flavor.



CLEAN

- 1 Take the inner pot out of the electric rice cooker, wash it with domestic liquefied detergent and rinse with fresh water and then wipe it dry with soft cloth.
* Do not use metal brush or other harsh tools to wash inner pot to avoid damaging the non- stick coating on its surface.
- 2 Take the water holder down and spill over water or soup and then install it after washing clean.
- 3 The grain of cooked rice or other sundries may attach to electric hot tray, the fine sand paper can be used for grind them away and wipe it with soft cloth to keep the dully contact between inner pot and electric heating plate.



SAFE NOTE

- 1 The earthed wall socket should be used and the plug must be inserted reliably. Do not use multipurpose socket while using other electric appliance at the same time.
- 2 When do not use it, please pull the power cord out of the socket.
- 3 Please make sure the power plug is fully inserted into socket. otherwise the element may be burnt out by poor connection.
- 4 The electric rice cooker can not be placed on unstable, wet place; fully otherwise it will be damaged or go wrong.
- 5 When cooking, the steam port is extraordinary hot, do not close face or hands to avoid scald.
- 6 The body and cover of electric rice cooker cannot be washed water or in water, otherwise the insulator will be damaged become dangerous.
- 7 If the power cord is damaged, it must be changed with new power cord produced by the manufacturer.
- 8 Do not let a child operate the product alone. Put it out of the reach of children to avoid electric shock, scald and other dangerous accident.

TROUBLE SHOOTING

No.	Malfunction		Causes	Solution
1	The light is off.	Heating plate is not hot.	Circuit of electric rice cooker is not connected to power supply.	Inspect whether the switch, plug and socket connector, fuse and leading wire of power supply are in good condition and insert the plug reliably
		Heating plate is hot.	1. Wiring connection of indicator light has loosened. 2. Indicator light is damaged.	It should be sent to an authorized service department for maintenance.
2	The light is on.	Heating plate is not hot.	1. Wiring in the middle has loosened. 2. Electric-thermal tube has burnt out.	
3	Cooked rice is crude or time of cooking is too long.		1. Cooking time is insufficient. 2. Heating plate is deformed. 3. Inner pot is declined and one side is hanging in the air. 4. There is foreign matter between inner pot and heating plate. 5. Inner pot is deformed.	1. Cook rice according to required conditions. 2. The fine sand paper can be used for correcting slight deformation but the severely deformed one should be sent to maintenance department for replacement. 3. Turn the inner pot lightly to make it return to normal. 4. Clean it up with fine sand paper 5. Send to designated service department.
4	Cook rice burnt or cannot keep warm automatically		1. The keys of cooking rice and lever link gear is not working. 2. The steel magnet temperature limiter is out of work. 3. The temperature controller is burnt out wiring of it is loosened.	It should be sent to an authorized service department for maintenance.

SPECIAL STATEMENT

Addition: Any technical improvements shall be placed in the revised manual without notice; for any changes in appearance and color, those of the actual product shall prevail.

All the contents in this material have been subjected to carefully check.

For any mistake and omission in printing or misunderstanding the contents, the TOSHIBA keeps the right of interpretation.

TOSHIBA

供家庭使用

東芝機械電飯煲/保溫鍋

使用說明書

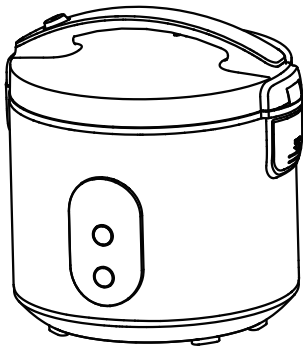
型號

1.0L 型

RC-10JRNH

1.8L 型

RC-18JRNH



目錄

重要安全措施.....	1
產品規格.....	2
開始使用.....	3
操作說明.....	4
注意事項.....	5
故障排除.....	6

- 感謝您購買東芝電飯煲。本手冊中的所有圖片僅用於功能展示，請以實物為準。
- 為了您自己的安全，請閱讀使用說明書並正確使用。使用前，請閱讀“安全措施”和“請按照說明操作”。
- 閱讀後，請將使用說明書放在用戶便於發現的地方以供參考。

重要安全措施



小心

使用電器時，應遵循以下基本的安全預防措施：



1. 本機可供肢體傷殘、感官或精神上有障礙或缺乏相關經驗及知識的人員（包括兒童）使用，前提是他們在使用本機時受到監督或得到安全使用指導。
2. 本機適用於家庭和類似的應用領域，
 - 例如商店、辦公室和其他工作環境的員工廚房區域；
 - 農舍；
 - 酒店、汽車旅館、家庭旅館環境中的顧客
 - 其他住宅類型環境中的顧客。



3. 如果電源線損壞，則必須採用製造商或其維修代理商提供的專用電源線或元件更換。
4. 在清潔、維護或重新安置之前以及不使用時，請關閉電源並拔下插頭。
5. 警告：誤用可能會造成潛在傷害。
6. 警告：避免溢出物濺到接頭上。



1. 本機僅供家庭使用。請勿在戶外使用。
2. 請看管好兒童，避免其玩耍電器。



3. 請勿將本機任何部件浸入水中或其他液體中。
4. 加熱元件表面使用後會有餘熱，請勿觸摸。

產品規格

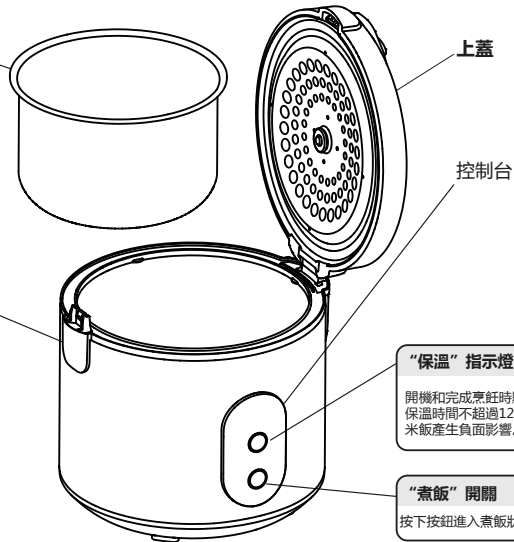
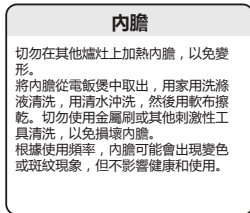
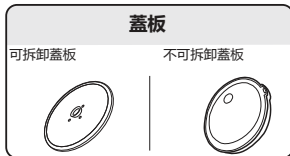
感謝您購買東芝電飯煲。使用前，請仔細閱讀本使用說明書。閱讀後請妥善保管以備將來參考。

首次使用時可能會有塑膠等氣味。使用後氣味會消失。



小心

本手冊中的所有圖片僅用於功能展示，請以實物為準。



“保溫”指示燈

開機和完成烹飪時顯示。米飯最佳保溫時間不超過12小時，否則會對米飯產生負面影響。

“煮飯”開關

按下按鈕進入煮飯狀態。

型號	額定電壓	額定功率 (W)	容量 (L)	烹飪方法	米量 (杯)	外形尺寸 (mm)	重量 (kg)
RC-10JRNH	220-240V~ 50/60Hz	500-595	1.0	加熱	1-5.5	255*240*254	2.2
RC-18JRNH		650-774	1.8		2-10	280*263*289	2.8
附件	飯勺 	量杯 	電源線 	蒸籠 			

開始使用

1. 首次使用本機前，請徹底清潔電飯煲的部件。在開始使用本機之前，請確保所有部件完全乾燥。
2. 為防止損壞內膽的防粘塗層，請使用單獨的容器淘洗稻米。
3. 使用提供的量杯估量米量。請勿超過內膽內側指示的數量。
4. 將淘洗過的米放入內膽中。
5. 向內膽中加水至相應米量對應的水位。
6. 擦乾內膽的外側。
7. 將內膽放入電飯煲中。
8. 關閉電飯煲的蓋子，直到聽到“啞嗶”聲。
9. 將電源線插入電飯煲和牆壁插座，然後打開電源。

操作說明

1 量米和淘洗

- 量杯主要用於衡量米量。一平杯是0.18升（約150克）。
- 請勿直接用內膽淘洗稻米，以免刮傷防粘層，使其因碰撞而變形，或由於與電熱板接觸不良而導致熱效率降低。

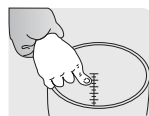
2 將淘洗過的米放入內膽中，加水至相應的水位（例如，要煮3杯米，則加水至水位“3”），可根據個人口味添加或減少水量。

3 用乾布擦拭內膽的內外側，將其放入電飯煲。輕輕轉動內膽數次，使其底部與電熱板接觸。

- 內膽和電熱板之間不得有異物。
- 確保蓋子正確關閉，否則烹飪效果可能會受到影響。

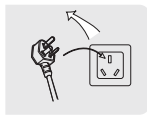
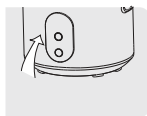
4 如有需要，可在煮飯時將蒸籠放入內膽中，將食物放在盤子上或蒸籠上一同蒸煮。

5 按下蓋子直至其卡入到位。



操作說明

- 6 烹飪**
插入插座後，“WARM”指示燈亮起。按下“COOK”開關後電飯煲進入烹飪程式。否則，電飯煲將一直處於保溫狀態（請確保已按下“COOK”，否則，電飯煲將一直處於保溫狀態）。
- 7 烹飪完成後，烹飪開關彈出並發出“啞嗒”聲。同時，COOK指示燈熄滅，保溫指示燈亮起。**
特別提示：
煮飯後保溫15分鐘米飯口味最佳。
- 8 盛飯時，請使用提供的飯勺，而不是金屬勺子，以免刮傷內膽的防粘塗層，同時造成塗層脫落，應去除乾燥的米飯。**
- 9 為了保持清潔衛生，請在烹飪後清潔接水盒中的米水。**



蒸煮功能（手動控制）

- 1 向內膽中加入適量的水。**
水量根據要蒸煮的食物的量而變化。
蒸籠放入內膽後，確保水位不超過蒸籠的底部。將蒸籠放入內膽中，將食物放在盤子上或蒸籠上。
- 2 按下COOK鍵開始烹飪。指示燈將切換到“COOK”**
- 3 如與烹調米飯同步進行，“WARM”鍵會在米飯烹調完成後亮起。**
- 4 如非與烹調米飯同步進行（只蒸煮食物），當食物蒸煮完成後，必須手動按下“WARM”鍵，電飯煲才會自動保溫。**

注意：為確保均勻蒸煮，請將食物均勻鋪開，避免堆放。

注意事項

- 1 內膽不能在任何其他爐灶上加熱，否則容易變形。
- 2 煮熟的米飯開始保溫，不適合立即食用，煲15分鐘後會更加柔軟可口。
- 3 保溫時間不超過12小時，以避免煮熟的米飯出現異味。



清潔方法

- 1 從電飯煲中取出內膽，用家用洗滌液清洗，用清水沖洗，然後用軟布擦乾。
*切勿使用金屬刷或其他刺激性工具清洗，以免損壞其表面的防粘塗層。
- 2 取下接水盒，倒掉水或湯，清洗乾淨後再重新裝上。
- 3 米飯顆粒或其他雜物可能會附著在電熱盤上，可以用細砂紙將其研磨掉並用軟布擦拭，以保持內膽與電熱板之間的良好接觸。



安全注意事項

- 1 應使用接地的牆壁插座，並請確保插頭已完全插入插座。在使用其他電器時請勿使用多功能插座。
- 2 不使用時，請將電源線從插座中拔出。
- 3 請確保電源線完全插入插座，否則元件可能因連接不良而燒壞。
- 4 電飯煲不能放置在不穩定或潮濕的場所，否則會損壞或出錯。
- 5 烹飪時，蒸氣口非常熱，請勿靠近面部或手部，以免燙傷。
- 6 電飯煲的機身和蓋子不能用水沖洗或浸入水中，否則會損壞絕緣體而引起危險。
- 7 如果電源線損壞，必須使用製造商生產的新電源線更換。
- 8 請勿讓兒童獨自操作本機。請將其放置在兒童接觸不到的地方，以避免觸電、燙傷等危險事故。

故障排除

編號	故障		原因	解決方法
1	燈熄滅。	加熱板不熱。	電飯煲的電路沒有連接電源。	檢查電源的開關、插頭和插座連接器、保險絲和引線是否完好，並完全插入插座。 交給授權服務部門進行維護。
		加熱板熱。	1.指示燈的接線連接鬆動。 2.指示燈損壞。	
2	燈亮起。	加熱板不熱。	1.中間的接線鬆動。 2.電熱管燒壞。	交給授權服務部門進行維護。
3	煮的米飯夾生或烹飪時間過長。		1.烹飪時間不足。 2.加熱板變形。 3.內膽傾斜，一側懸空。 4.內膽與加熱板之間有異物。 5.內膽變形。	1.根據要求的條件煮飯。 2.細砂紙可用於修正輕微變形，但嚴重變形應交由維修部門更換。 3.輕輕轉動內膽使其恢復正常。 4.用細砂紙清潔。 5.交給指定的服務部門。
4	米飯燒焦或不能自動保溫		1.煮飯按鍵和杠杆連杆裝置不起作用。 2.鋼制磁鐵溫度限制器失靈。 3.溫度控制器燒壞其接線鬆動。	交給授權服務部門進行維護。

特別聲明

增加：本產品的任何技術改進都會加入修訂手冊中，恕不另行通知；外觀和顏色的變化以實物為準。

本手冊的所有內容均經過仔細檢查。

對於印刷錯誤和遺漏或對內容的理解分歧，東芝擁有解釋權。