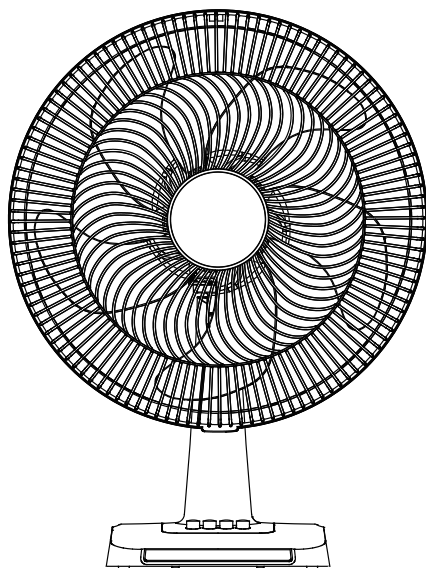


# **TOSHIBA**

## **OWNER'S MANUAL**

Table Fan  
MODEL: F-TSA20(G)MY



***READ AND SAVE THESE INSTRUCTIONS***

Attention: Pictures in the Instruction manual are for reference only.

## **CAUTION**

Read Rules for Safe Operation and Instructions Carefully.

## **WARNING**

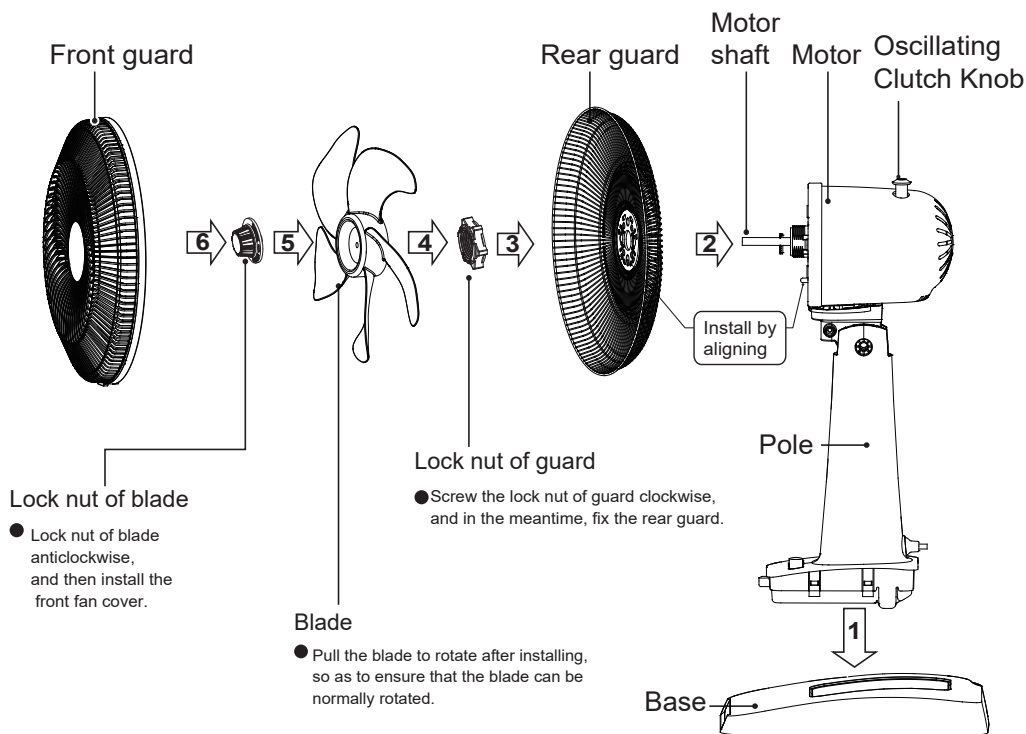
1. If the supply cord is damaged, it must be replaced by manufacturer or its service agent or a similarly qualified person in order to avoid a hazard.
2. Indoor use only.
3. To protect against the risk of electrical shock, do not immerse the unit, cord or plug in water or other liquid.
4. This appliance is not intended for use by persons (including children) with reduced physical, sensory or mental capabilities, or lack of experience and knowledge, unless they have been given supervision or instruction concerning use of the appliance by a person responsible for their safety. Children should be supervised to ensure that they do not play with the appliance.
5. When the appliance is not in use and before cleaning, unplug the appliance from the outlet.
6. Keep electrical appliances out of reach from children or infirm persons. Do not let them use the appliances without supervision.
7. When the fan was assembled, the rotor blade guard shall not be taken off anymore
  - Prior cleaning unplug the fan
  - The rotor guard shall not be disassembled/ opened to clean the rotor blades.
  - Wipe the fan enclosure and rotor blade guard with a slightly damp cloth.

## **RULES FOR SAFE OPERATION**

1. Never insert fingers, pencils, or any other object through the guard when fan is running.
2. Disconnect fan when moving from one location to another.
3. Be sure fan is on a stable surface when operating to avoid overturning.
4. DO NOT use fan near to window, rain may create electrical hazard.
5. Indoor use only.
6. Operate the fan after ensuring the guard and blade is installed.

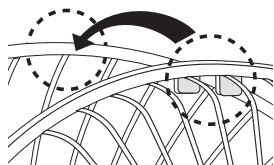
# OPERATING INSTRUCTIONS

## ■ Name of components

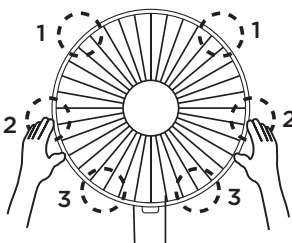


### Front and Rear Guard Installation

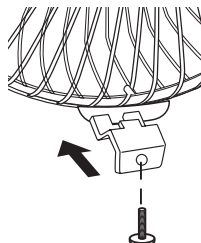
Align Catch of the Front Guard with the illustrated position of the Rear Guard.



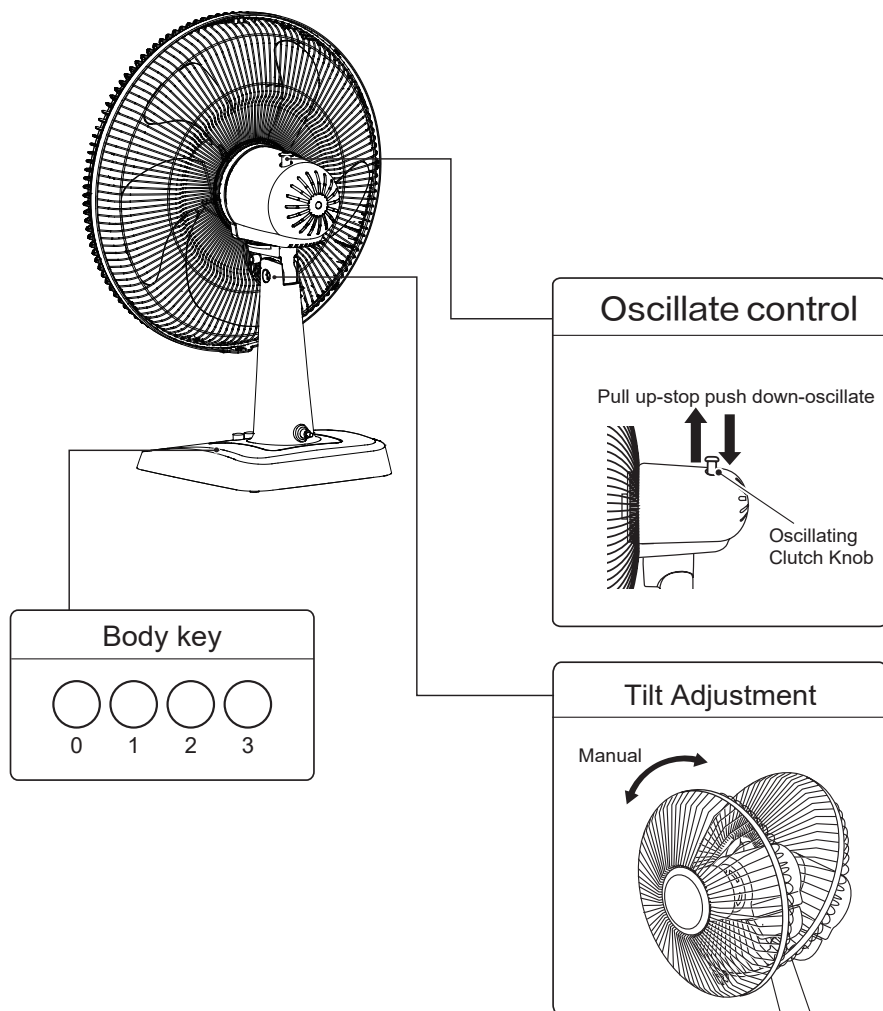
Press guards sequentially with both hands.



Self-Catch Installation.



# INSTRUCTIONS FOR USE



## MAINTENANCE INSTRUCTION

The fan requires little maintenance. Do not try to fix it by yourself. Refer it to qualified service personnel if service is needed.

1. Before cleaning and assembling, fan must be unplugged.
2. To ensure adequate air circulation to the motor, keep vents at the rear of the motor free of dust. Do not disassemble the fan to remove dust.
3. Please wipe the exterior parts with a soft cloth soaking a mild detergent.
4. Do not use any abrasive detergent or solvents to avoid scratching the surface.  
Do not use any of the following as a cleaner: gasoline, thinner, bending.
5. Do not allow water or any other liquid into the motor housing or interior parts.

## CLEANING

1. Be sure to unplug from the electrical supply source before cleaning.
2. Plastic parts should be cleaned with a soft cloth moisten with mild soap.  
Thoroughly remove soap film with dry cloth.

## SPECIFICATIONS

Model	F-TSA20(G)MY
Rated voltage	220-240V~
Rated Frequency	50Hz
Power consumption	55W
Blade Diameter	ø400mm
Unit Dimension	L : 452mm W : 290mm H : 600mm
Net weight	Approx. 3.4 kg
Accessories	None