

# TOSHIBA



99.99%  
Bacteria Free

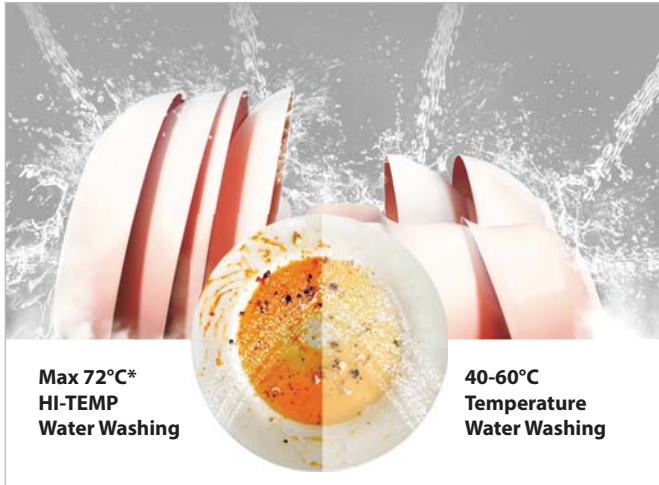
## HYGIENE & CONVENIENCE MATTERS.



DISHWASHER

## HI-TEMP Hygiene Cycle

Maximum 72°C\* high temperature washing, promotes optimum cleaning results for the heaviest soiled dishware and reduces 99.99% of bacteria.



Max 72°C\*  
HI-TEMP  
Water Washing

40-60°C  
Temperature  
Water Washing

## Effortless Eco-dishwashing

Dishes are beautifully cleaned with less efforts and water consumption.



Saving 85% +  
Water Consumption

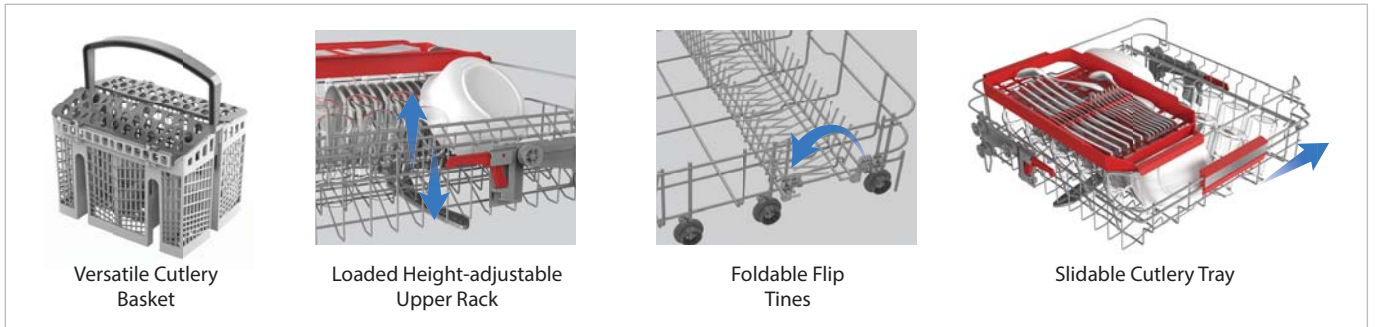
\*1 : The data mentioned here refers to the water consumption of ECO mode.

\*2 : According to "Washing-up behaviour and techniques in Europe" published by Stamminger et al. in 2007, the estimated average water consumption of hand wash is 103L



## Flexible Rack System, Infinite Loading Flexibilities

Allow you stack more categories of tableware, glassware, utensils and even cookware, and make loading and unloading so smooth.



Versatile Cutlery Basket

Loaded Height-adjustable Upper Rack

Foldable Flip Tines

Slidable Cutlery Tray



### Anti-bacterial\*3 Filter Reduces 99.9% of Bacteria

Our filter, employed anti-bacterial material, constantly inhibits micro-organism buildup inside the tub, ensuring a high level of health protection by reducing 99.9% of bacteria.



### Soil-sensing Auto Cycle

Intelligently manipulates electricity and wate consumption, by detecting and evaluating the type and the level of soiling, to deliver fresh and clean tableware with lower cost.



### Smart Power-off Memory

Power-off Memory function can remember the unfinished wash cycle, when there is a sudden outage, and continue the washing process when power is back on, without a need to operate it again.

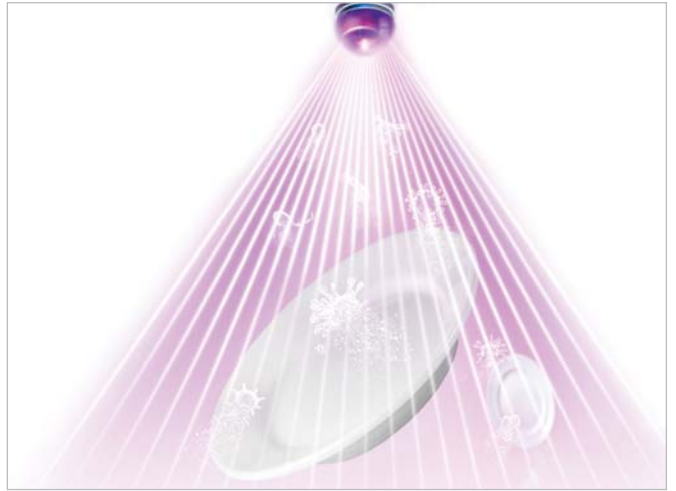
### Turbo Heat Drying\*\*

Equipped with fan-assist Turbo Heat Drying technology to deliver a constant airflow circulating throughout the tub during the drying process, our dishwasher can remove water droplets and exhaust the moisture, perfectly drying even for plastics.



### UV-LED Light\*

UV-LED, installed in the sump, maintains a decent anti-bacterial effect during drying period.



### 720° Crosswash\*

Equipped with two strong spray arms, to provide kneading forces, by simultaneous forward and reverse rotations. As such, the CROSSWASH Spray Arm is capable to flush all tableware and utensils without a dead angle, achieving an excellent cleaning result.



### 72 Hours Freshness, Hot Air For Ready-To-Serve Dishes\*

Whether it's in damp weather or a long time after your dishes are washed, always deliver you fresh & warm dishware to serve ready-to-eat dishes.



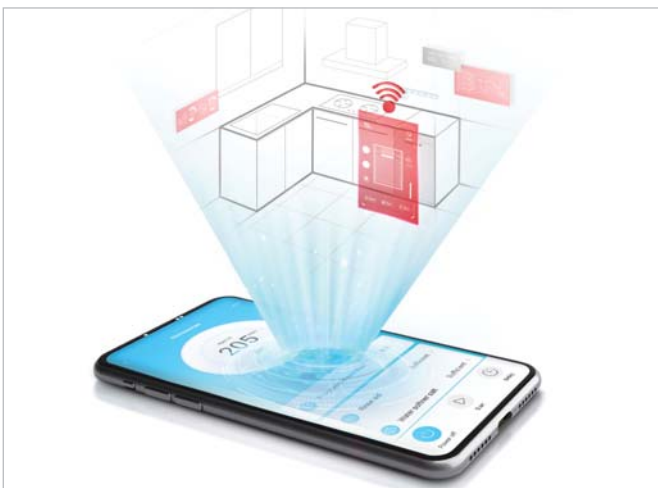
### Smart Dishwashing, Smart Life\*\* Close At Hand



**CloudWash**  
Unlock more cycles



**1-24 Hours Delay Start**  
Delay the start of your dishwasher simply on App



### Dual BLDC Motor\*



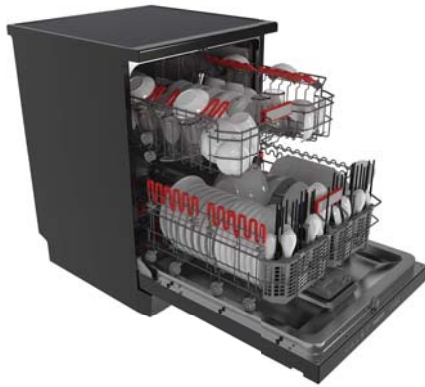
Wash Faster & Stronger



Quiet Performance







## DW-15F6(G)-MY\*



Turbo heat drying



Anti-bacterial filter



Soil-sensing auto cycle



Hi-temp hygiene cycle



LED panel



Auto Wash



Aqua Stop



Self-cleaning cycle



Delay start

Product Introduction (with English subtitle)



B. Melayu



华语



## DW-14F2(BS)-MY



Hi-temp hygiene cycle



Anti-bacterial filter



Turbo Drying



UV-LED Light



Dual Display



44dB(A)



Overflow Float Switch



## DW-14F1(S)-MY



Hi-temp hygiene cycle



Anti-bacterial filter



Soil-sensing auto cycle



Delay start



LED panel



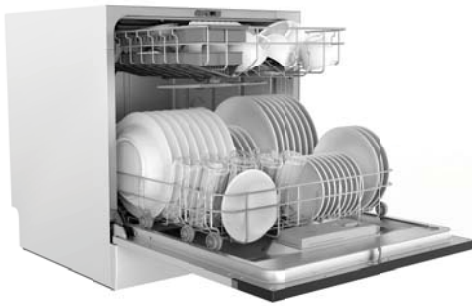
Half Load



Overflow Float Switch

## PRODUCT SPECIFICATIONS

Model	DW-15F6(G)-MY	DW-14F2(BS)-MY	DW-14F1(S)-MY
Family Size	12 - 14	12 - 14	12 - 14
Capacity	15 Place Settings	14 Place Settings	14 Place Settings
Water Consumption	11L	11L	11L
Control Type	Touch Control	Touch Control	Electronic button Control
Size (WxDxH)(mm)	600 × 600 × 805	598 x 600 x 845	598 x 600 x 845
Energy Level	A++	A++	A++
Noise Level	44dB	44dB	49dB
Installation type	Freestanding	Freestanding	Freestanding
Program	8 (Auto Daily, Intensive, Hygiene, Eco, Glass, 90min, Rapid, Soak)	8 (Auto Daily, Intensive, Hygiene, Eco, Glass, 90min, Rapid, Soak)	6 (Auto Daily, Hygiene, Eco, Glass, 90min, Rapid)
Option	4 (Sanitization, Extra Drying, Power Wash, Express)	4 (Sanitization, Extra Drying, Power Wash, Express)	2 (Extra Drying, Power Wash)
Start delay	24h	24h	24h
Others	Dual Zone, UV light, Mini dispenser, Adjustable Basket, Sliding Cutlery Tray, Anti Bacteria Filter	Dual Zone, UV light, Mini dispenser, Adjustable Basket, Sliding Cutlery Tray, Anti Bacteria Filter	2 level tray, Half load, Mini dispenser, Adjustable Basket, Sliding Cutlery Tray, Anti Bacteria Filter
Warranty	2 Years	2 Years	2 Years



## DW-08T3(S)-MY\*\*



Turbo heat drying



Anti-bacterial filter



Soil-sensing auto cycle



Hi-temp hygiene cycle



LED panel



Auto Wash



TSmartLife



Self-cleaning cycle



Delay start

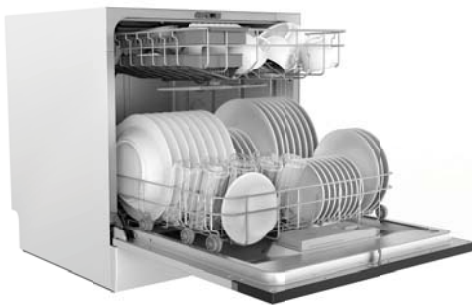
Product Introduction (with English subtitle)



B. Melayu



华语



## DW-08T1(S)-MY



Hi-temp hygiene cycle



Anti-bacterial filter



Self-cleaning cycle



Delay start



LED panel



18+ Categories



Maximum Placing



Overflow Float Switch

## PRODUCT SPECIFICATIONS

Model	DW-08T3(S)-MY	DW-08T1(S)-MY
Family Size	8-12	8-12
Capacity	8 Place Settings	8 Place Settings
Water Consumption	8L	8L
Control Type	Electronic button Control	Electronic button Control
Size (WxDxH)(mm)	550 × 500 × 595	550 x 500 x 595
Energy Level	A+	A+
Noise Level	49dB	49dB
Installation type	Table top	Table top
Program	7 (Auto, Hygiene, Eco, Glass, 90min, Rapid, Self-cleaning)	7 (Hygiene, Normal, Eco, Glass, 90min, Rapid, Self-cleaning)
Option	-	-
Start delay	24h	24h
Ohters	Anti Bacteria Filter	Anti Bacteria Filter
Warranty	2 Years	2 Years

# #DetailsMatter

Website: **toshiba-lifestyle.com/my**

Customer line: **1-300-88-7899**



Website



Catalogue



Product Registration

**Toshiba Sales And Services Sdn. Bhd.** (Company No: 32538-D)

Ground Floor & Level 5, Bangunan Palm Grove II, No: 12, Jalan Glenmarie (Persiaran Kerjaya) Section U1, 40150 Shah Alam, Malaysia.

• **Selangor** tel: 03-5565 8000 fax: 03-5565 8080 **Service Centre:** 1-300-88-7899 fax: 03-5565 8080 • **Penang** 04-506 2933 / 04-502 2933 • **Perak** 05-3214 099  
• **Johor** 07-3536 988 / 07-3510 479 • **Melaka** 06-2829 682 • **Pahang** 09-505 4482 • **Kelantan** 09-744 3461 • **Sabah** 088-437 787 • **Sarawak** 082-503 670

    **Toshiba Lifestyle Malaysia**

\* Product size, product weight, and related specifications are theoretical values only, actual measurements between individual products may vary.

\* All specifications are subject to the actual product and change without prior notice.

\* Color tone of actual products may differ from those featured in this catalogue.

\* Printed as in May 2024