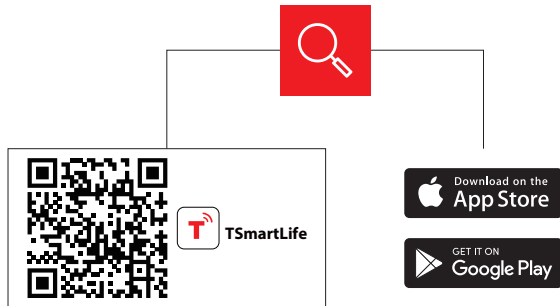


QUICK START GUIDE

1 DOWNLOAD THE TSmartLife APP

Scan QR code or find us on your app store



2 REGISTER AND LOG IN

Log in for existing users or sign up for new users

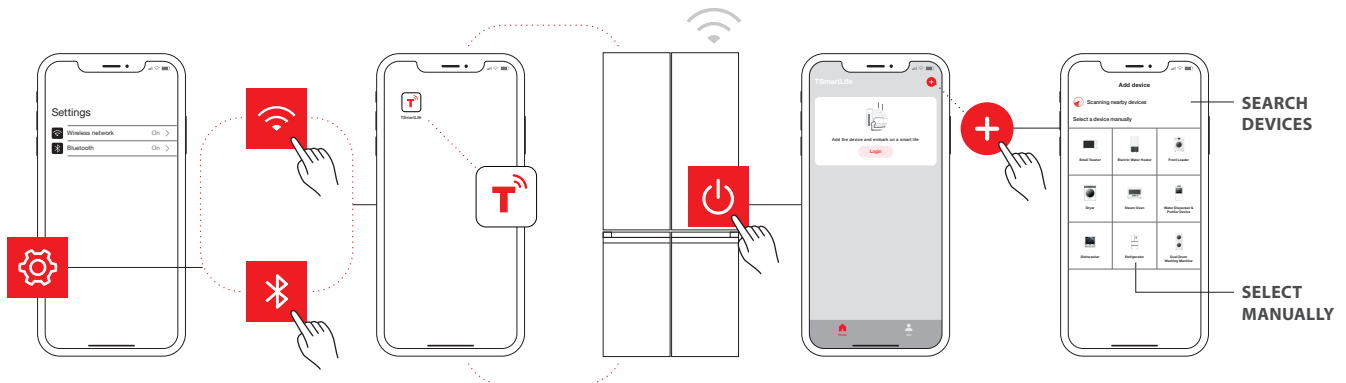


3 CONNECT YOUR DEVICES TO TSmartLife

A. Connect to wireless network and enable Bluetooth

B. Open the TSmartLife app. Power on selected device

C. Add your device using one of the following methods:



QUICK TIPS

- Make sure your devices are powered on.
- Keep your mobile phone close to your device during connection.
- Connect your mobile phone to the wireless network at home.
- Enable the 2.4GHz frequency on your wireless network router. Contact the manufacturer if unsure whether the router supports 2.4GHz.
- The device is unable to connect to wireless network that requires authentication and also appears in public areas such as hotels and restaurants.
- It is recommended to use a wireless network name that only contains letters and numbers. If your wireless network name contains special characters, modify it in the router. Disable WLAN+ (Android) or WLAN Assistant (iOS) when connecting your devices to the network.
- To reconnect a device to the wireless network, click "+" on the app home screen and add the device again by the category and model according to the app prompts.

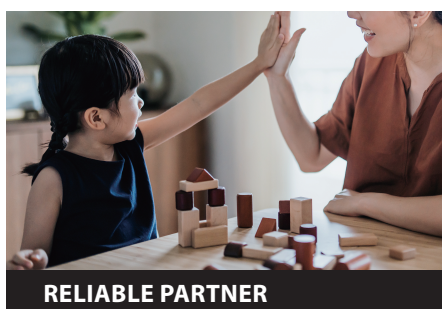
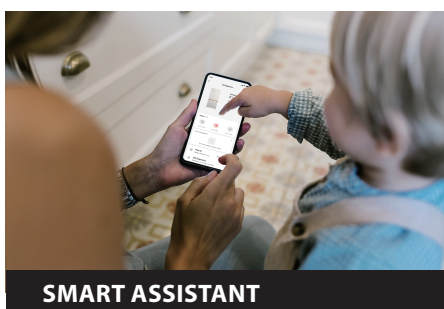
www.toshiba-lifestyle.com

TOSHIBA

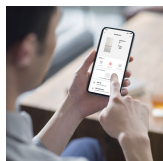
TOSHIBA

STAYING CONNECTED MATTERS.

#DetailsMatter



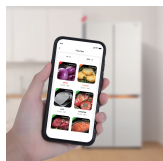
REMOTE CONTROL



The operation mode of the refrigerator can be controlled remotely on the APP.

- Adjust Temperature
- Super Cooling
- Super FRZ.
- Auto mode

FOOD MANAGEMENT



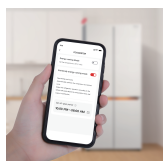
TOSHIBA's food management feature allows you to monitor the freshness of your food at all times. Organize your food regularly to prevent waste.

ENERGY CONSUMPTION



Automatic statistics of weekly, monthly, and annual power consumption so that the user is always aware of the refrigerator's power consumption and provides energy-saving tips according to the refrigerator's habits.

ECOMASTER



Turn on ECOMASTER at the time you set to automatically adjust your refrigerator's temperature and defrost time, which can help you save energy and electric charge.

OPEN-DOOR ALARM



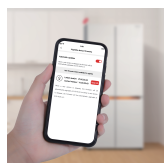
Send reminder when the REF is not closed properly.

FAMILY CARE



Check the REF's opening record by family members. Send a reminder if the REF has not been opened during the setting time.

OTA UPGRADE



Delivering sustainable and scalable IoT services.

SELF DIAGNOSTICS



The refrigerator can actively perform self-tests for abnormalities, analyse faults and fix them with a single click, helping users to solve problems faster and more effectively.

AFTER-SALES



The user can call the after-sales by one click, and check the common FAQ, user manual on the APP.

- After-sales
- FAQ information
- E-manual

* Actual functions are subject to the version after activating the appliances



TSmartLife