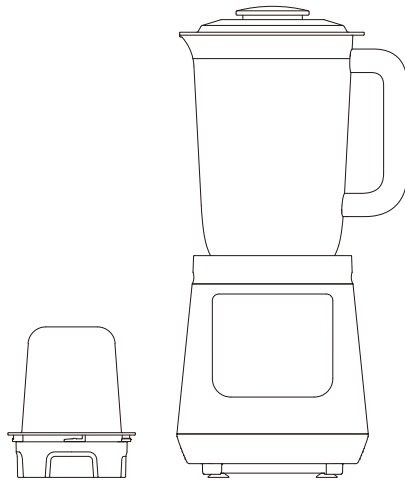


BLENDER



USER MANUAL BL-70PR1NMY

CONTENT

IMPORTANT SAFEGUARDS.....	1
Technical Data.....	4
General Description.....	4
Using your product.....	5
Cleaning and Maintenance.....	8
Abnormal analysis and disposal.....	9
Recycling.....	9

IMPORTANT NOTE: Please read the manual carefully before operating your product. Retain it for future reference.

IMPORTANT SAFEGUARDS

- Read carefully and save all the instructions provided with this appliance.
- Always use your appliance from a power outlet of the voltage (A.C. only) marked on the appliance.
- This appliance is designed for domestic use only.
- Do not pull the connection cord, but rather on the plug, to separate the appliance from the mains.
- Do not use at outdoor.
- Do not leave the appliance unattended when it is switched on, as this may be a source of danger.
- Place the appliance on a table or flat surface.
- If the supply cord is damaged, it must be replaced by the manufacturer, its service agent or similarly qualified persons in order to avoid a hazard.
- Do not operate for more than 2 minutes. Keep 1 minute rest between each cycle.
- Avoid to touch the moving parts.
- Do not blend hot ingredients.
- Turn off the power and unplug when the appliance is not in use and before cleaning.
- Do not use your appliance with an extension cord unless this cord has been checked and tested by a qualified technician or service person.
- Do not use an appliance for any purpose other than its intended use.
- Do not place an appliance on or near a hot gas flame, electric element or on a heated oven. Do

- not place on top of any other appliance.
- Do not let the power cord of an appliance hang over the edge of a table or bench top or touch any hot surface.
 - Do not operate any electrical appliance with a damaged cord or after the appliance has been dropped or damaged in any manner.
 - Do not immerse the appliance in water or any other liquid.
 - Be careful when handling the sharp cutting blades, emptying the bowl and during cleaning.
 - Cleaning and user maintenance shall not be made by children without supervision.
 - This appliance shall not be used by children. Keep the appliance and its cord out of reach of children.
 - This appliance is not intended for use by persons (including children) with reduced physical, sensory or mental capabilities, or lack of experience and knowledge, unless they have been given supervision or instruction concerning use of the appliance by a person responsible for their safety.
 - Children should be supervised to ensure that they do not play with the appliance.
 - Household use only.

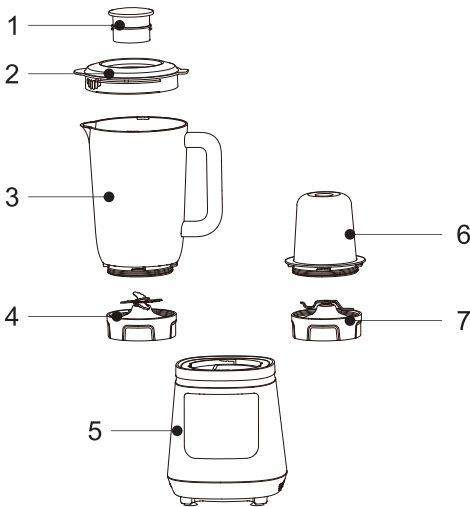
- Switch off the appliance and disconnect from power supply before changing accessories or approaching parts that move in use.
- This appliance is intended to be used in household and similar applications such as:
 - Staff kitchen areas in shops, office and other working environments.
 - farm houses;
 - by clients in hotels, motels and other residential type environments;
 - bed and breakfast type environments.
- Be careful if hot liquid is poured into the food processor or blender as it can be ejected out of the appliance due to a sudden steaming.

SAVE THESE INSTRUCTIONS.

Technical Data

Product name	Model	Voltage	Frequency	Power	Effective capacity
Blender	BL-70PR1NMY	220-240V~	50/60Hz	700W	1500ml

General Description

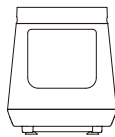


No.	Description
1	Small measuring cup
2	Jug cover
3	Blender jug
4	Component of blending blade base
5	Engine base
6	Grinding cup
7	Component of grinding blade base

Packing list



Blender jug



Engine base



Grinding cup assembly



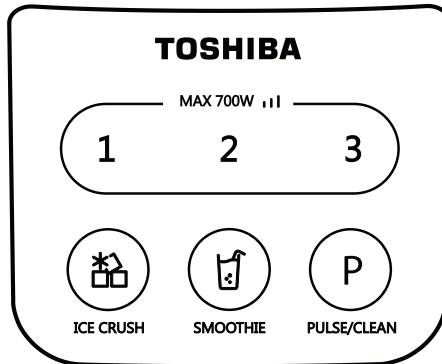
Product manual

Using your product

Notes before use

1. Wash the components which contact with foods directly and confirm that the power supply has been cut off.
2. Temperature of the food and liquid should not exceed 40°C and the capacity should not exceed the maximum scale.
3. After every usage, please refer to “cleaning and maintenance” for timely cleaning and maintenance.
4. Grinding cup is only used for grinding of dry foods. Not for blending hot food, fluid, liquid and grinding hard traditional Chinese medicines (such as spirifer, caesalpinia, stone magnetism etc.)

Function interface



After selecting certain function, press corresponding function button to start blending; after finished the blending, it will automatically stop; in case of continuing to blend, please press corresponding function button again. During blending, press any button to stop blending.

After the component is screwed into the engine base, you may hear clatter sound, which means installation in place.

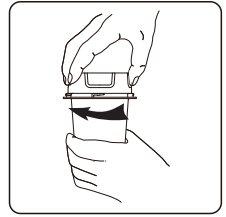
Application method

• Grinding function

1. Bake the foods before grind (such as soybean, pepper, anise & etc.) or place them under the sun to remove the moisture and then put them into the grinding cup. Note not to exceed maximum grinding scale.



2. Screw the grinding blade base into the grinding cup in clockwise.



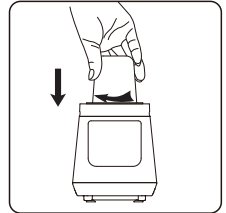
3. Press down the components of grinding cup to screw into the engine base, switch on the power supply of main engine, press the speed "1", "2", or "3" to start procedure and wait that agitating procedure is implemented automatically.

Note:

i. During food grinding, in case of idling, i.e. the blade cannot touch the food, switch off the machine immediately, take down the vessel from engine base and loose the food for grinding again. During grinding, please be ensure to continuously operate not more than one minute. In case the required effect fails to be met, operate repeatedly for a few times until achieving ideal effect. In order to make the grinding more fine, please dry or bake the food in advance.

ii. After grinding three times consecutively, the component of grinding blade base needs to be cooled to room temperature.

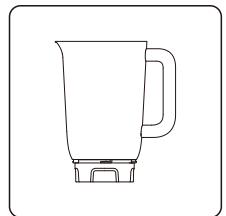
4. Disconnect the power supply of main engine, take grinding components down and pour out of the grinded powder.



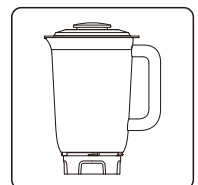
• **Stirring function**

★ **Steps of use for products with no strainers:**

1. Chop appropriate amount of fruits, vegetables, cereals or other materials into pieces and strips with sizes not exceeding 2cm; put them into the blender jug, and add cooled boiled water or other beverages and condiments in appropriate amount, then put the blender jug cover on (the total volume of food and water shall not exceed 1500ml).



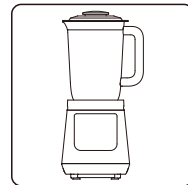
2. Install the components of the stirring cup on the engine base ; switch on the power supply of the engine base, press the speed "1", "2" or "3" to start the program, and wait till the stirring program automatically finishes its operation.



3. Switch off the power supply of the engine base, take down the blender jug, and pour out the made fruit, vegetable and cereal juice.
(it is recommended to soak or cook thoroughly the hard cereals and beans in advance).

Note:

When stirring mixed food containing a halogen-containing dairy product, the total volume of food and liquid shall not exceed 1000ml.



TIPS FOR USE

1. Liquid ingredients: dairy produce, juice, milk shake and so on.
2. A combination of soft ingredients: milk, papaya, mayonnaise.
3. Ratio 2:3 papaya and milk, blending in speed 3 for 1 minutes.

• Description of "ICE CRUSH", "SMOOTHIE" and "PULSE/CLEAN" functions

<p>ICE CRUSH</p>	<ol style="list-style-type: none"> 1. Put appropriate amount of dry ice with size of 2cm into the blender jug, and put the blender jug cover on (notice: the maximum quantity shall not exceed 25 pieces, in case that the ice smashing effect may be impacted). 2. Push and screw the components of the blender jug into the engine base, switch on the power supply of the main machine, press "ICE CRUSH" to start the program, and wait till the blending program automatically finishes its operation. 3. Switch off the power supply of the main machine, and pour out the made smoothie. <p>NOTICE: When using the "ICE CRUSH" function, the desktop must be dry and wipe the four rubber feet of the engine base with a dry rag.</p>
<p>SMOOTHIE</p>	<ol style="list-style-type: none"> 1. Chop the fruits or vegetables (not exceeding 500g) into pieces and strips with sizes not exceeding 2cm. Put them into the blender jug, and add ice-cold water or other beverages and condiments in appropriate amount, then put the blender jug cover on (the total volume of food and water shall not exceed 1500ml). 2. Push and screw the components of the blender jug into the machine base, switch on the power supply of the main machine, press "SMOOTHIE" to start the program, and wait till the blending program automatically finishes its operation. 3. Switch off the power supply of the main machine, and pour out the made SMOOTHIE.

Pulse/Clean	Press “PULSE/CLEAN” to start the machine, and loosen to stop; add appropriate amount of water (the volume of water shall not exceed 1000ml), press “PULSE/CLEAN” intermittently to conduct simple cleaning of the blender jug.
--------------------	--------------------------------------------------------------------------------------------------------------------------------------------------------------------------------------------------------------------------------

The three functions above are limited to the use of components of blender jug.

Cleaning and Maintenance

Cleaning

After using the product, the dismantable accessories must be cleaned immediately; the following steps can be referred to when cleaning:

1. Firstly, unplug from power supply, remove the blender jug or grinding cup off the machine base, and dismantle the blade base from the cup.

Notice:

- ① The machine base must not be put in any liquid and shall not be washed; it can be cleaned with wet cloth.
 - ② Abradant and similar cleaning materials are forbidden to be used; components shall not be washed in dish-washing machines, and shall not be put in disinfection cabinets for disinfection.
 - ③ The edge of the blade device is very sharp, please handel with care when cleaning.
2. The dismantled components can be washed under the water faucet, or cleaned in warm water with detergent.
3. After juice is poured out from the blender jug, clean water shall be poured in, and the instant “Pulse/clean” working mode shall be used repeatedly, so as to achieve better cleaning of the blender jug.
4. If the component is colored by fruit and vegetable juice, a few drops of cooking oil may be used to wipe it before washing, which will achieve better effect of color removal.
5. After the components are washed by clean water, they shall be wiped and dried completely.

Maintenance

1. It is recommended to use the product frequently, so as to keep the motor dry.
2. In case of not in use for a long time, please keep the product at dry and ventilating places to prevent the motor from being affected by damp.

Abnormal analysis and disposal

Abnormal disposal

1. In case the products have abnormal conditions, such as: abnormal noise, smell and smog etc., it should cut off the power and stop using.
2. In case the products fail to work: please check if the power supply is connected well, if the switch is “on” and the accessories are installed in right place.
3. In case there are water leakage in the blade holder and blender jug, please check if the seal ring are rightly installed (such as distortion and wrinkle).
4. In case the products still fail to work after the above inspection, please service the products at the authorized service center.

Analysis and Elimination of Failure

Failures	The analysis of possible reasons	Solutions
The machine doesn't work	The blender jug or the grinding cup is not installed in place	Install the components of blender jug or the grinding cup in the host; it is installed in place in case of a clicking sound
The blade components are blocked	The food material in the products are overmuch	Reduce the dosage of the processed food
	The food material sticks on the blade	Turn off the power, clean up the food materials on the blade
The products give out abnormal smell, scald hands and smoke etc.	The food material in the products are overload	Reduce the dosage of the processed food
	The machine keeps working for too long time	Reduce the running time
The blender jug leaks	The bottom of cup is not screwed tightly	Screw the cup base of the blender jug tightly
The blender jug overflows	There is too much water	The water should not exceed the maximum volume
	The lid of blender jug is not in the right place	Rightly cover the lid of blender jug

In case the problems are not solved, or there are other problems, please contact customer service center for assistance.

Recycling

ENVIRONMENTAL PROTECTION



The appliance must not be disposed of with regular household waste. At the end of its service life, the appliance must be properly delivered to a collection point for the recycling of electrical and electronic equipment. By collection and recycling of old appliances, you are making an important contribution to the conservation of our natural resources and provide for environmentally sound and healthy disposal.