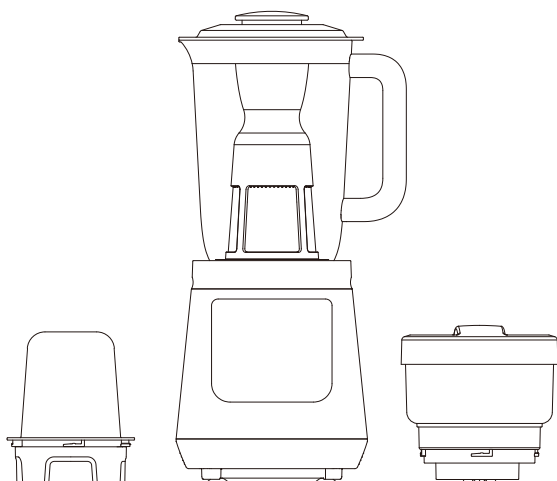


BLENDER



USER MANUAL BL-70PR2NMY

CONTENT

IMPORTANT SAFEGUARDS.....	1
Technical Data.....	4
General Description.....	4
Using your product.....	5
Cleaning and Maintenance.....	10
Recycling.....	10
Abnormal analysis and disposal.....	11

IMPORTANT NOTE: Please read the manual carefully before operating your product. Retain it for future reference.

IMPORTANT SAFEGUARDS

- Read carefully and save all the instructions provided with this appliance.
- Always use your appliance from a power outlet of the voltage (A.C. only) marked on the appliance.
- This appliance is designed for domestic use only.
- Do not pull the connection cord, but rather on the plug, to separate the appliance from the mains.
- Do not use at outdoor.
- Do not leave the appliance unattended when it is switched on, as this may be a source of danger.
- Place the appliance on a table or flat surface.
- If the supply cord is damaged, it must be replaced by the manufacturer, its service agent or similarly qualified persons in order to avoid a hazard.
- Do not operate for more than 2 minutes. Keep 1 minute rest between each cycle.
- Avoid to touch the moving parts.
- Do not blend hot ingredients.
- Turn off the power and unplug when the appliance is not in use and before cleaning.
- Do not use your appliance with an extension cord unless this cord has been checked and tested by a qualified technician or service person.
- Do not use an appliance for any purpose other than its intended use.
- Do not place an appliance on or near a hot gas flame, electric element or on a heated oven. Do

- not place on top of any other appliance.
- Do not let the power cord of an appliance hang over the edge of a table or bench top or touch any hot surface.
 - Do not operate any electrical appliance with a damaged cord or after the appliance has been dropped or damaged in any manner.
 - Do not immerse the appliance in water or any other liquid.
 - Be careful when handling the sharp cutting blades, emptying the bowl and during cleaning.
 - Cleaning and user maintenance shall not be made by children without supervision.
 - This appliance shall not be used by children. Keep the appliance and its cord out of reach of children.
 - This appliance is not intended for use by persons (including children) with reduced physical, sensory or mental capabilities, or lack of experience and knowledge, unless they have been given supervision or instruction concerning use of the appliance by a person responsible for their safety.
 - Children should be supervised to ensure that they do not play with the appliance.
 - Household use only.

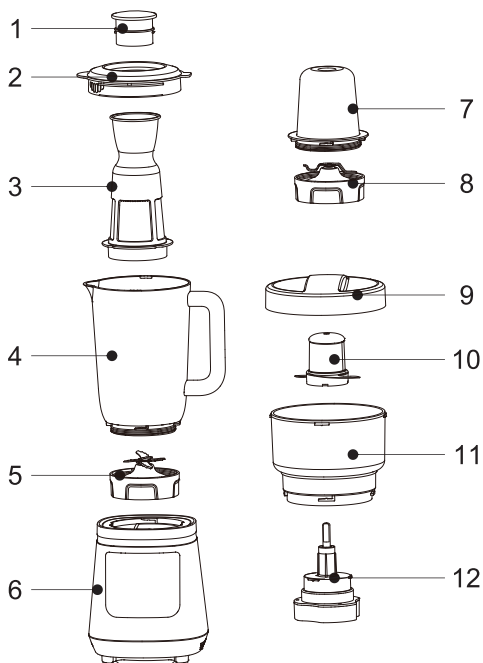
- Switch off the appliance and disconnect from power supply before changing accessories or approaching parts that move in use.
- This appliance is intended to be used in household and similar applications such as:
 - Staff kitchen areas in shops, office and other working environments.
 - farm houses;
 - by clients in hotels, motels and other residential type environments;
 - bed and breakfast type environments.
- Be careful if hot liquid is poured into the food processor or blender as it can be ejected out of the appliance due to a sudden steaming.

SAVE THESE INSTRUCTIONS.

Technical Data

Product name	Model	Voltage	Frequency	Power	Capacity
Blender	BL-70PR2NMY	220-240V~	50/60Hz	700W	1500ml

General Description



No.	Description
1	Small measuring cup
2	Jug cover
3	Strainer
4	Blender jug
5	Component of blending blade base
6	Engine base
7	Grinding cup
8	Component of grinding blade base
9	Meat grounding cup lid
10	Meat grounding blade
11	Meat grounding cup
12	Gearbox

Packing list



Blender jug



Engine base



Grinding cup assembly



Meat grounding cup assembly



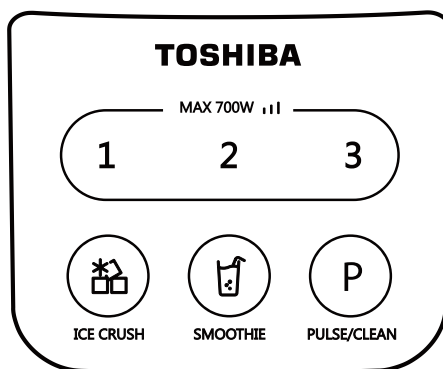
Product manual

Using your product

Notes before use

1. Wash the components which contact with foods directly and confirm that the power supply has been cut off.
2. Temperature of the food and liquid should not exceed 40°C and the capacity should not exceed the maximum scale.
3. After every usage, please refer to “cleaning and maintenance” for timely cleaning and maintenance.
4. Grinding cup is only used for grinding of dry foods. Not for blending hot food, fluid, liquid and grinding hard traditional Chinese medicines (such as spirifer, caesalpinia, stone magnetism etc.)

Function interface



After selecting certain function, press corresponding function button to start blending; after finished the blending, it will automatically stop; in case of continuing to blend, please press corresponding function button again. During blending, press any button to stop blending.

After the component is screwed into the engine base, you may hear clatter sound, which means installation in place.

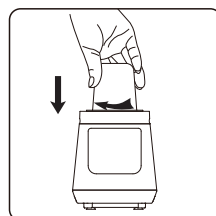
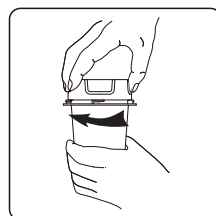
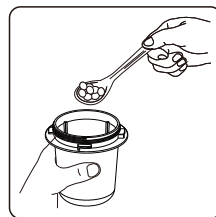
Application method

• Grinding function

1. Bake the foods before grind (such as soybean, pepper, anise & etc.) or place them under the sun to remove the moisture and then put them into the grinding cup. Note not to exceed maximum grinding scale.
2. Screw the grinding blade base into the grinding cup in clockwise.
3. Press down the components of grinding cup to screw into the engine base, switch on the power supply of main engine, press the speed “1”, “2”, or “3” to start procedure and wait that agitating procedure is implemented automatically.

Note:

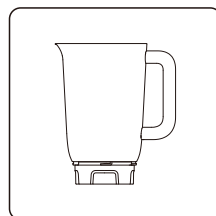
- i. During food grinding, in case of idling, i.e. the blade cannot touch the food, switch off the machine immediately, take down the vessel from engine base and loose the food for grinding again. During grinding, please be ensure to continuously operate not more than one minute. In case the required effect fails to be met, operate repeatedly for a few times until achieving ideal effect. In order to make the grinding more fine, please dry or bake the food in advance.
 - ii. After grinding three times consecutively, the component of grinding blade base needs to be cooled to room temperature.
4. Disconnect the power supply of main engine, take grinding components down and pour out of the grinded powder.



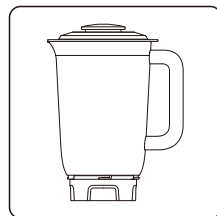
• Stirring function

★ Steps of use for products with no strainers:

1. Chop appropriate amount of fruits, vegetables, cereals or other materials into pieces and strips with sizes not exceeding 2cm; put them into the blender jug, and add cooled boiled water or other beverages and condiments in appropriate amount, then put the blender jug cover on (the total volume of food and water shall not exceed 1500ml).



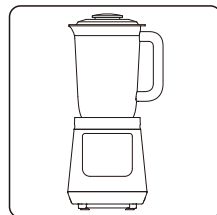
2. Install the components of the blender jug on the engine base ; switch on the power supply of the engine base, press the speed "1", "2" or "3" to start the program, and wait till the stirring program automatically finishes its operation.



3. Switch off the power supply of the engine base, take down the blender jug, and pour out the made fruit, vegetable and cereal juice.
(it is recommended to soak or cook thoroughly the hard cereals and beans in advance).

Note:

When stirring a mixed food containing a alogen-containing dairy product,the total volume of food and liquid shall not exceed 1000ml.



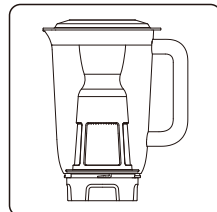
TIPS FOR USE

1. Liquid ingredients: dairy produce, juice, milk shake and so on.
2. A combination of soft ingredients: milk, papaya, mayonnaise.
3. Ratio 2:3 papaya and milk, blending in speed 3 for 1 minutes.

★ Steps of use for products with strainers:

If the juice is required to be fine and smooth, strainers may be used for supporting.

1. Put the strainer into the blender jug, put the jug cover on, screw out the small measuring cup, and chop appropriate amount of fruits, vegetables, cereals or other materials into pieces and strips with sizes not exceeding 2cm; put them into the blender jug, and add cooled boiled water or other beverages and condiments in appropriate amount, then screw the small measuring cup (the total volume of food and water shall not exceed 1500ml).

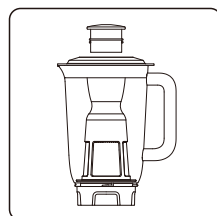


2. Put the well soaked wet beans (about 50g) into the strainer, add appropriate amount of water (not exceeding 1000ml). Notice: in case that the effect may be not good enough when stirring liquid with higher concentration, the soybeans added shall not be excessive.

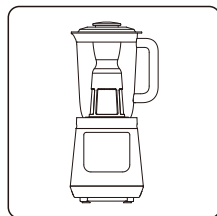
Notice:

The soak time of soybeans will differ in different water temperatures: 8-12h for temperature below 20°C, and about 4-6h for temperature above 20°C.

3. Install the components of the blender jug on the engine base; switch on the power supply of the engine base, press "SMOOTHIE" to start the program, and wait till the stirring program automatically finishes its operation.



4. Switch off the power supply of the engine base, take down the blender jug, and pour out the made fruit, vegetable and cereal juice (it is recommended to soak or cook thoroughly the hard cereals and beans in advance).



MEAT GROUNDING FUNCTION

1. Place the meat grounding blade holder in the meat grounding cup, cut the ingredients into cubes of about 1-2 cm and put into the meat grounding cup, take note that the amount of ingredients should not exceed the maximum scale of the meat grounding cup.

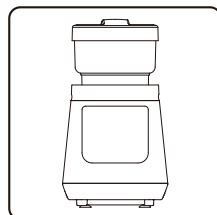
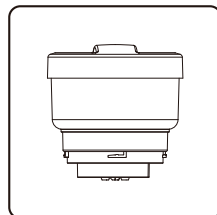
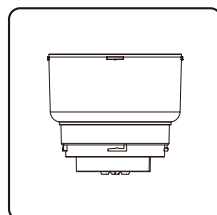
Note:

- a. The skin and bones of meat should be removed, and frozen meat should be thawed before processing.
 - b. The meat grounding blade is not suitable for processing hard food and water-rich food, such as frozen meat, cereals or ice.
2. Press the lid of the grounding cup down, turn clockwise and tighten it to the meat grounding cup.
 3. Press the meat grounding cup component down into the machine seat, connect the main power supply, press the speed "3" key, start the program, and wait for the program to be executed automatically.

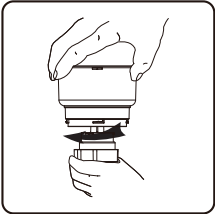
Note:

If the ingredients stuck to the wall of the meat grounding cup or the base of the meat grounding blade and cannot be grounded, the main power supply should be disconnected first, and the ingredients should be spread out with a scraper spoon and then continue to ground the meat.

4. After the grounding, disconnect the main power supply first, turn the whole meat grounding cup in anticlockwise direction to loosen the cup, and then press it down slightly with your hand while turning out the lid cover, take out the grounding blade, and pour out the meat paste.



5. The gearbox is strictly prohibited from cleaning inside liquid! Turn the meat grounding cup in anticlockwise direction and take out from the gear box before cleaning! It is strictly prohibited to use this product with empty load capacity or overload capacity!



• Description of "ICE CRUSH", "SMOOTHIE" and "PULSE/CLEAN" functions

<p>ICE CRUSH</p>	<ol style="list-style-type: none"> 1.Put appropriate amount of dry ice with size of 2cm into the blender jug, and put the blender jug cover on (notice: the maximum quantity shall not exceed 25 pieces, in case that the ice smashing effect may be impacted). 2.Push and screw the components of the blender jug into the engine base, switch on the power supply of the main machine, press "ICE CRUSH" to start the program, and wait till the blending program automatically finishes its operation. 3.Switch off the power supply of the main machine, and pour out the made smoothie. <p>NOTICE: When using the "ICE CRUSH" function, the desktop must be dry and wipe the four rubber feet of the engine base with a dry rag.</p>
<p>SMOOTHIE</p>	<ol style="list-style-type: none"> 1.Chop the fruits or vegetables (not exceeding 500g) into pieces and strips with sizes not exceeding 2cm. Put them into the blender jug, and add ice-cold water or other beverages and condiments in appropriate amount, then put the blender jug cover on (the total volume of food and water shall not exceed 1500ml). 2.Push and screw the components of the blender jug into the machine base, switch on the power supply of the main machine, press"SMOOTHIE" to start the program, and wait till the blending program automatically finishes its operation. 3.Switch off the power supply of the main machine, and pour out the made SMOOTHIE.
<p>Pulse/Clean</p>	<p>Press "PULSE/CLEAN" to start the machine, and loosen to stop; add appropriate amount of water (the volume of water shall not exceed 1000ml), press "PULSE/CLEAN" intermittently to conduct simple cleaning of the blender jug.</p>

The three functions above are limited to the use of components of blender jug.

Cleaning and Maintenance

Cleaning

After using the product, the dismantlable accessories must be cleaned immediately; the following steps can be referred to when cleaning:

1. Firstly, unplug from power supply, remove the blender jug or grinding cup off the machine base, and dismantle the blade base from the cup.

Notice:

- ① The machine base must not be put in any liquid and shall not be washed; it can be cleaned with wet cloth only.
 - ② Abradant and similar cleaning materials are forbidden to be used; components shall not be washed in dish-washing machines, and shall not be put in disinfection cabinets for disinfection.
 - ③ The edge of the blade device is very sharp, please handle with care when cleaning.
2. The dismantled components can be washed under the water faucet, or cleaned in warm water containing with detergent.
 3. After juice is poured out from the blender jug, clean water shall be poured in, and the instant "Pulse/clean" working mode shall be used repeatedly, so as to achieve better cleaning of the blender jug.
 4. If the component is colored by fruit and vegetable juice, a few drops of cooking oil may be used to wipe it before washing, which will achieve better effect of color removal.
 5. After the components are washed by clean water, they shall be wiped and dried completely.

Maintenance

1. It is recommended to use the product frequently, so as to keep the motor dry.
2. In case of not in use for a long time, please keep the product at dry and ventilating places to prevent the motor from being affected by damp.

Recycling



ENVIRONMENTAL PROTECTION

The appliance must not be disposed of with regular household waste. At the end of its service life, the appliance must be properly delivered to a collection point for the recycling of electrical and electronic equipment. By Collection and recycling of old appliances, you are making an important contribution to the conservation of our natural resources and provide for environmentally sound and healthy disposal.

Abnormal analysis and disposal

Abnormal disposal

1. In case the products have abnormal conditions, such as: abnormal noise, smell and smog etc., it should cut off the power and stop using.
2. In case the products fail to work: please check if the power supply is connected well, if the switch is “on” and the accessories are installed in right place.
3. In case there are water leakage in the blade holder and blender jar, please check if the seal ring are rightly installed (such as distortion and wrinkle).
4. In case the products still fail to work after the above inspection, please service the products at the authorised service venter and consult it.

Analysis and Elimination of Failure

Failures	The analysis of possible reasons	Solutions
The machine doesn't work	The blender jug or the grinding cup is not installed in place	Install the components of blender jug or the grinding cup in the host; it is installed in place in case of a clicking sound
The blade components are blocked	The food material in the products are overload	Reduce the dosage of the processed food
	The food material sticks on the blade	Turn off the power, clean up the food materials on the blade
The products give out abnormal smell, scald hands and smoke etc.	The food material in the products are over load	Reduce the dosage of the processed food
	The machine keeps working for too long time	Reduce the running time
The blender jug leaks	The bottom of cup is not screwed tightly	Screw the cup base of the blender jug tightly
The blender jug overflows	There is too much water	The water should not exceed the maximum volume
	The lid of blender jug is not in the right place	Rightly cover the lid of blender jug

In case the problems are not solved, or there are other problems, please contact customer service center for assistance.