

USER MANUAL

BLENDER
BL-60GHVMY(W)

TOSHIBA



CATALOG

IMPORTANT SAFEGUARDS.....	1
TECHNICAL DATA.....	4
GENERAL DESCRIPTION.....	4
USING YOUR PRODUCT.....	5
RECYCLING.....	9
CLEANING AND MAINTENANCE.....	10
ABNORMAL ANALYSIS AND DISPOSAL.....	11

IMPOR TANT SAFEGUARDS

- Read carefully and save all the instructions provided with this appliance.
- Always use your appliance from a power outlet of the voltage (A.C. only) marked on the appliance.
- This appliance is designed for domestic use only.
- Do not pull on the connection cord, but rather on the plug, to separate the appliance from the mains.
- Do not use outdoor.
- Do not leave the appliance unattended when it is switched on, as this may be a source of danger.
- Stand the appliance on a table or flat surface.
- If the supply cord is damaged, it must be replaced by the manufacturer, its service agent or similarly qualified persons in order to avoid a hazard.
- Do not operate for more than 2 minutes. Keep 1 minute rest between each cycle.
- Avoid touching the moving parts.
- Do not blend hot ingredients.
- Turn off the power and unplug when the appliance is not use and before cleaning.
- Do not use your appliance with an extension cord unless this cord has been checked and tested by a qualified technician or service person.
- Do not use an appliance for any purpose other than its intended use.
- Do not place an appliance on or near a hot gas electric element or on a heated oven. Do not place on top of any other appliance.

- Do not let the power cord of an appliance hang over the edge of a table or bench top or touch any hot surface.
- Do not operate any electrical appliance with a damaged cord or after the appliance has been dropped or damaged in any manner.
- Do not immerse the appliance in water or any other liquid.
- Be careful when handling the sharp cutting blades, emptying the bowl and during cleaning.
- Cleaning and user maintenance shall not be made by children without supervision.
- This appliance shall not be used by children. Keep the appliance and its cord out of reach of children.
- This appliance is not intended for use by persons (including children) with reduced physical, sensory or mental capabilities, or lack of experience and knowledge, unless they have been given supervision or instruction concerning use of the appliance by a person responsible for their safety.
- Children should be supervised to ensure that they do not play with the appliance.
- If the supply cord is damaged, it must be replaced by the manufacturer, its service agent or similarly qualified persons in order to avoid a hazard.
- Household use only.
- There is a potential injury from misuse. Please handle it with care.
- CAUTION: Ensure that the blender is switched off before removing it from the stand.

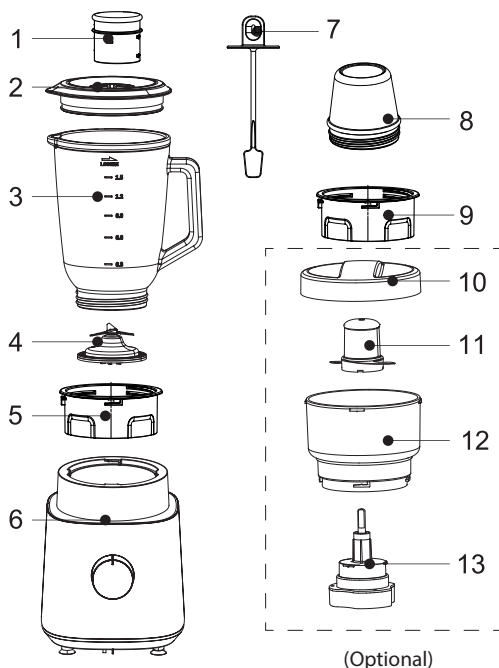
- Switch off the appliance and disconnect from supply before changing accessories or approaching parts that move in use.
- This appliance is intended to be used in household and similar applications such as:
 - Staff kitchen areas in shops, office and other working environments.
 - farm houses;
 - by clients in hotels, motels and other residential type environments;
 - bed and breakfast type environments.
- Be careful when handling the sharp cutting blades, emptying the bowl and during cleaning the appliances.
- Be careful if hot liquid is poured into the food processor or blender as it can be ejected out of the appliance due to a sudden steaming.
- Always disconnect the appliance from the supply if it is left unattended and before assembling, disassembling or cleaning.
- This product is equipped with an overheat protection device. In case of abnormal use or serious overload operation of the motor, the product will automatically stop for protection. If it still cannot be started after 30 minutes of protection, please contact with the manufacturer, its service agent or similarly qualified persons. Do not disassemble the machine by yourself;
- Do not operate without jar cover.

SAVE THESE INSTRUCTIONS.

Technical Data

Product name	Model	Voltage	Frequency	Power	Capacity
Blender	MJ-BL7002W	220-240V~	50-60Hz	600W	1500mL

General Description

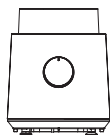


No.	Description
1	Small measuring cup
2	Cup cover
3	Blender jar
4	Component of blending blade base
5	Blade base
6	Engine base
7	Apatula
8	Grinding cup
9	Component of grinding blade base
10	Meat grounding cup lid
11	Meat grounding blade
12	Meat grounding cup
13	Gearbox

Packing list



Stirring cup
assembly



Engine base



Grinding cup
assembly



Meat grounding
cup assembly
(Optional)



Product manual

Using your product

Before First Use

- Before using your blender for the first time, remove any packaging material and promotional labels.
- Be careful when handling the blades as they are extremely sharp.
- Wash the jug, lids, blade assembly and attachments in warm soapy water with a soft cloth.

Rinse and dry thoroughly. All parts (except motor base) may be washed in the dishwasher, on the top shelf.

Overload Protection System

- The working time of the grinding cup should not be more than 60 seconds and the max capacity shall not exceed 50g, the continuous working interval must be 5 minutes and no more than 3 times, and the working time of the mixing cup should not exceed 3 minutes. After the shutdown, it is necessary to let it fully heat, cooling to room temperature.
- The MAX line is usually a good indicator to prevent overly heavy loading, however some especially dense combinations of ingredients may still strain the motor. If the motor seems to be straining or running slowly, only operate for 10 seconds at a time, or reduce the amount of ingredients used. Adding more liquid can also help to loosen dense mixtures.

NOTE

- Do not process hot foods or liquids in blender.
- Do not store food or liquids in the blender jar.
- Avoid bumping or dropping the blender.

Table Blender

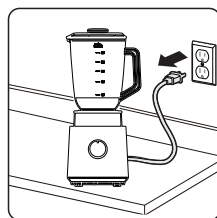
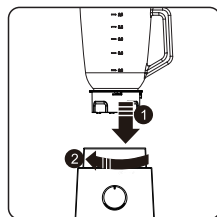
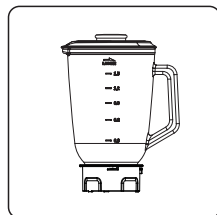
• Stirring function

★ Steps of use for products with no strainers:

1. Chop appropriate amount of fruits, vegetables, cereals or other materials into pieces and strips with sizes not exceeding 2cm; put them into the stirring cup, and add cooled boiled water or other beverages and condiments in appropriate amount, then put the stirring cup cover on (the total volume of food and water shall not exceed 1500mL).
2. Install the mixing cup component on the engine base; Switch on the power supply of the frame and run the knob to 2nd gear for 1 minute.
3. Switch off the power supply of the engine base, take down the stirring cup, and pour out the made fruit, vegetable and cereal juice.
(it is recommended to soak or cook thoroughly the hard cereals and beans in advance).

Note:

When stirring a mixed food containing a alogen-containing dairy product,the total volume of food and liquid shall not exceed 1000ml.



Grinder (Optional)

Application method

• Grinding function

1. Bake the foods to be grinded (such as coffee, pepper.) or place them under the sun for air to remove the moisture and then put them into the grinding cup. Note not to exceed maximum grinding scale.

2. Screw the grinding blade base into the grinding cup clockwise.

3. Screw the grinding cup assembly into the base of the host, turn on the power supply of the host, turn the knob to 2, and run for 30s.

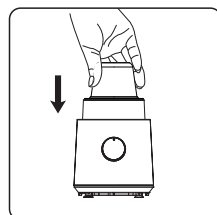
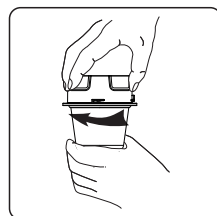
Note:

1. During food grinding, in case of idling, i.e. the blade cannot touch the food, switch off the machine immediately, take down the vessel from engine base and loose the food for grinding again. During grinding, please be ensure to continuously operate not more than one minute. In case the required effect fails to be met, operate repeatedly for a few times until achieving ideal effect. In order to make the grinding more fine, please dry or bake the food in advance.

2. After grinding three times consecutively, the component of grinding blade base needs to be cooled to room temperature.

4. Disconnect the power supply of main engine, take grinding components down and pour out of the grinded powder.

5. Please note that the maximum capacity should not exceed 50g.



● TIP

During the process of grinding dry ingredients in a grinding cup, if there is a situation where the ingredients stick to the wall and the stirring effect is poor, please scrape the ingredients into the cup and stir them again.

Meat grounding function (Optional)

1. Place the meat grounding blade holder in the meat grounding cup, cut the ingredients into cubes of about 1-2 cm and put into the meat grounding cup, take note that the amount of ingredients should not exceed the maximum scale of the meat grounding cup.

Note:

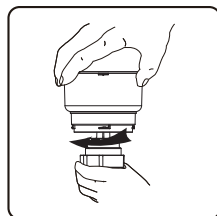
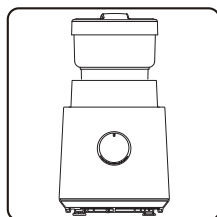
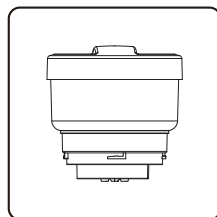
- a. The skin and bones of meat should be removed, and frozen meat should be thawed before processing.
- b. The meat grounding blade is not suitable for processing hard food and water-rich food, such as frozen meat, cereals or ice.

2. Press the lid of the grounding cup down, turn clockwise and tighten it to the meat grounding cup.
3. Press the meat grounding cup component down into the machine seat, connect the main power supply, turn the knob to start the program, and run for 30 seconds.




Note:

If the ingredients stuck to the wall of the meat grounding cup or the base of the meat grounding blade and cannot be grounded, the main power supply should be disconnected first, and the ingredients should be spread out with a scraper spoon and then continue to ground the meat.

4. After the grounding, disconnect the main power supply first, turn the whole meat grounding cup in anticlockwise direction to loosen the cup, and then press it down slightly with your hand while turning out the lid cover, take out the grounding blade, and pour out the meat paste.
5. The gearbox is strictly prohibited from cleaning inside liquid! Turn the meat grounding cup in anticlockwise direction and take out from the gear box before cleaning! It is strictly prohibited to use this product with empty load capacity or overload capacity!



Recipe

ATTACHMENT	FUNCTION	FOOD	WORK TIME	SPEED
 Grinding cup assembly	Grind	Coffee beans 50g	30s	Hight
 Stirring cup assembly	Smoothie	600g carrot 900g water	1min	Hight
	ICE Crush	ICE with size of 2cm Up to 8 pieces	4s ON 4s OFF 10 cycle	Pulse
 Meat grounding cup assembly	Minced meat	Meat, Cut strips 2*2*6cm, or dice 2*2*2cm Approximately 200g	30s	Hight

⚠ CAUTION

- Don't use Commercial ice cubes.
- Hot liquids can erupt during blending. Do not blend hot liquids.
- This product is not suitable for mixing dry food. Never run the appliance empty.

💡 TIP

- In the process of operation, Turn the knob to "0" to complete the program in advance.
- Turn the knob to "0" to stop any program and shut down the device during operation.

Recycling

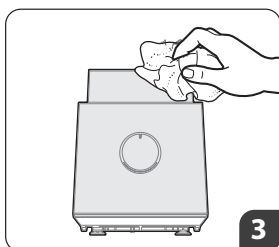
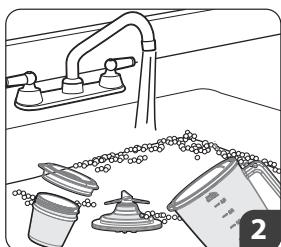
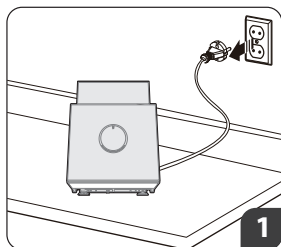
ENVIRONMENTAL PROTECTION



The appliance must not be disposed of with regular household waste. At the end of its service life, the appliance must be properly delivered to a collection point for the recycling of electrical and electronic equipment. By Collection and recycling of old appliances, you are making an important contribution to the conservation of our natural resources and provide for environmentally sound and healthy disposal.

Cleaning and Maintenance

Cleaning



⚠ WARNING

Caution hazard: Blades in jar are very sharp. Use caution when cleaning.
Unplug the power cord from the power outlet after use for safety reasons.

Jug, blades and lids

Avoid allowing food residue to dry on. Follow these steps as soon as possible after use:

- Rinse most of the residue on the jug, blades and lids.
- Hand wash in warm, soapy water using a mild liquid detergent and non-abrasive sponge.

Motor base

To clean the motor base, wipe with a soft, damp cloth then dry thoroughly. Wipe any excess food particles from the power cord.

Cleaning agents

Do not use abrasive scouring pads or cleaners on either the motor base or any part of the blender, as they may scratch the surface. Use only warm soapy water with a soft cloth.

Dishwasher

The jug, lids and blade assembly may be washed in the dishwasher on the top shelf only.

Stubborn food stains and odours

Strong smelling foods such as cumin and coriander, and some vegetables such as carrots may leave an odour or stain.

To remove, pour warm soapy water and fill to the MAX mark. Set aside to soak for 5 minutes. Then wash with a mild detergent and warm water, rinse well and dry thoroughly. Store blending bottle and jug with lids off.

Maintaining

Store your blender upright with the blender jug assembled on the motor base, or beside it. Do not place anything on top. To allow air to circulate, keep the lid off.

Abnormal analysis and disposal

Abnormal disposal

1. In case the products have abnormal conditions, such as: abnormal noise, smell and smog etc., it should cut off the power and stop using.
2. In case the products fail to work: please check if the power supply is connected well, if the switch is “on” and the accessories are installed in right place.
3. In case there are water leakage in the blade holder and stirring cup, please check if the seal ring are rightly installed (such as distortion and wrinkle).
4. In case the products still fail to work after the above inspection, please maintain the products in the designated maintenance center and consult it.

Analysis and Elimination of Failure

Failures	The analysis of possible reasons	Solutions
The machine doesn't work	The stirring cup or the grinding cup are installed in place	Install the components of stirring cup or the grinding cup in the host; it is installed in place in case of a clicking sound
The blade components are blocked	The food material in the products are overmuch	Reduce the dosage of the processed food
	The food material sticks on the blade	Turn off the power, clean up the food materials on the blade
The products give out abnormal smell, scald hands and smoke etc.	The food material in the products are overmuch	Reduce the dosage of the processed food
	The machine keeps working for too long time	Reduce the running time
The stirring cup leaks	The bottom of cup is not screwed tightly	Screw the cup base of the stirring cup tightly
The stirring cup overflows	There is too much water	The water should not exceed the maximum volume
	The lid of stirring cup is not in the right place	Rightly cover the lid of stirring cup

In case the problems are not solved, or there are other problems, please contact customer service center to gain help.

#DetailsMatter