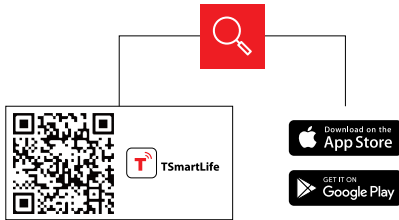


QUICK START GUIDE

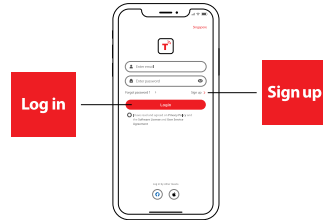
1 DOWNLOAD THE TSmartLife APP

Scan QR code or find us on your app store



2 REGISTER AND LOG IN

Log in for existing users or sign up for new users

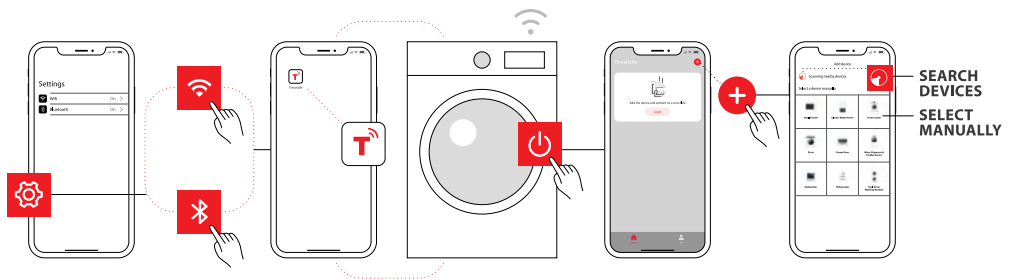


3 CONNECT YOUR DEVICES TO TSmartLife

A. Connect to Wi-Fi and enable Bluetooth

B. Open the TSmartLife app. Power on selected device

C. Add your device using one of the following methods:



QUICK TIPS

- Make sure your devices are powered on.
- Keep your mobile phone close to your device during connection.
- Connect your mobile phone to the wireless network at home.
- Enable the 2.4GHz frequency on your Wi-Fi router. Contact the manufacturer if unsure whether the router supports 2.4GHz.
- The device is unable to connect to Wi-Fi that requires authentication and also appears in public areas such as hotels and restaurants.
- It is recommended to use a Wi-Fi name that only contains letters and numbers. If your Wi-Fi name contains special characters, modify it in the router.
- Disable WLAN+ (Android) or WLAN Assistant (iOS) when connecting your devices to the network.
- To reconnect a device to the Wi-Fi, click "+" on the app home screen and add the device again by the category and model according to the app prompts.

www.toshiba-lifestyle.com

TOSHIBA

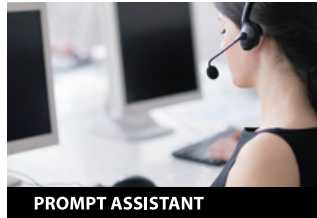
TOSHIBA

STAYING CONNECTED MATTERS.

#DetailsMatter



SMART CONTROL



PROMPT ASSISTANT



LAUNDRY CARE

REMOTE CONTROL



- Control your washing machine anytime, anywhere with TSmartLife.

REAL-TIME RESERVATION



- Set your laundry schedule easily and arrange your time wisely.

CLOUD PROGRAM



- Access more programs and options with TSmartLife.

PROGRAM COMPLETION PUSH



- TSmartLife can remind you that the program has finished in time.

ERROR STATUS ALERTS



- Get error alerts once malfunction happens.

SELF-CLEAN REMINDER



- TSmartLife cares about the health of you and your appliances.

LAUNDRY GUIDE



- Have no idea of program selection? TSmartLife gives you professional laundry advice.

PROGRAM DIY



- You can set up to 5 of your favorite programs and adjust parameters to use them easily.

* Actual functions are subject to the version after activating the appliances



TSmartLife