

TOSHIBA

TUMBLE DRYER

OWNER'S MANUAL

MODEL

TD-T37BS100HWM(WT)

Read This Manual



Read and follow the instructions carefully.
Keep the operation instructions handy for
future use .

Please contact the customer service if
you are in need of a new user manual.

CONTENTS

SAFETY INSTRUCTIONS

■ Safety Instructions	2
-----------------------------	---

INSTALLATION

■ Product Description	10
■ Installation	10

OPERATION

■ Quick Start	14
■ Before Each Drying	15
■ Control Panel	16
■ Option.....	18
■ Display.....	21
■ Programmes.....	22
■ Instructions to Connection with the TSmartLife App.....	23
■ Drying Programmes Table	26
■ Steam Function	28

MAINTENANCE

■ Cleaning and Care	29
■ Trouble Shooting	31
■ Technical Specifications	33

SAFETY INSTRUCTIONS

■ Safety Instructions

For your safety, the information in this manual must be followed to minimize the risk of fire or explosion, electric shock, or to prevent property damage, personal injury or loss of life.

Explanation of the symbols:

Warning!

This combination of symbol and signal word indicates a potentially dangerous situation which may result in death or serious injuries unless it's avoided.

Caution!

This combination of symbol and signal word indicates a potentially dangerous situation which may result in slight or minor injuries or damage to property and the environment.

Note!

This combination of symbol and signal word indicates a potentially dangerous situation which may result in slight or minor injuries.

Intended use

- This dryer is intended for household use only. It is not for commercial use or shared use (i.e. by use in an apartment.)
- This dryer is for indoor use only.

SAFETY INSTRUCTIONS

Safety Instructions

- This appliance must be grounded. In the event of malfunction or breakdown, grounding will reduce the risk of electric shock by providing a path of least resistance for electric current.
- This appliance is equipped with a cord having an equipment-grounding conductor and grounding plug. The plug must be plugged into an appropriate outlet that is properly installed and grounded in accordance with all local codes and ordinances.
- Improper connection for the appliance when using not grounded outlet or when GND terminal of outlet is not suitable with GND terminal of power plug, can result in risk of electric shock. Check with a qualified electrician or service person if you are in doubt as to whether the appliance is properly grounded.

Warning!

Risk of Electric Shock

- Do not use any outlet with rated current less than that of appliance.
- Do not pull the power cord forcefully. Hold power plug instead.
- Do not touch the plug with wet hands.
- Do not bend, clamp or damage the power cord and the power plug.
- If the power cable is damaged, it must be replaced by the manufacturer, its service agent or similarly qualified persons in order to avoid a hazard.

SAFETY INSTRUCTIONS

- The appliance must not be supplied through an external switching device, such as a timer, or connected to a circuit that is regularly switched on and off by a utility.
- Do not use multiple outlet sockets, an extension power cable or double adapter with this appliance.
- Plug must be accessible after installation.

Risk of Injury

- Do not attempt to repair, disassemble, or modify the appliance yourself.
- Do not lean on the opened door of the dryer.
- Do not drink condensed water.

Risk of Product Damage

- Do not put more load than rated in this user manual. See the related chapter in the user manual.
- Do not operate the dryer without Doorfilter and Base filter.
- Do not dry the clothes without spin-dry.
- Do not expose the dryer directly under the sun.
- Do not install the dryer in humid and wet environment.
- Before maintenance, unplug the appliance.
- Do not spray water on the appliance.
- Do not overturn the appliance.

SAFETY INSTRUCTIONS

Warning!

Risk of Explosion & Fire

- Please do not dry the clothes with any flammable substances such as kerosene or alcohol.
- The tumble dryer is not to be used if industrial chemicals have been used for cleaning.
- Do not dry unwashed items in the tumble dryer.
- Items that have been soiled with substances such as cooking oil, acetone, alcohol, petrol, kerosene, spot removers, turpentine, waxes and wax removers should be washed in hot water with an extra amount of detergent before being dried in the tumble dryer.
- Items such as foam rubber (latex foam), shower caps, waterproof textiles, rubber backed articles and clothes or pillows fitted with foam rubber pads should not be dried in the tumble dryer.
- Fabric softeners, or similar products, should be used as specified by the fabric softener instructions.
- Oil-affected items can ignite spontaneously, especially when exposed to heat sources such as in a tumble dryer. The items become warm, causing an oxidation reaction in the oil. Oxidation creates heat. If the heat cannot escape, the items can become hot enough to catch fire. Piling, stacking or storing oil-affected items can prevent heat from escaping and so create a fire hazard.
- Remove all objects from pockets such as lighters and matches.

SAFETY INSTRUCTIONS

- If it is unavoidable that fabrics that contain vegetable or cooking oil or have been contaminated by hair care products are placed in a tumble dryer they should first be washed in hot water with extra detergent. This will reduce, but not eliminate, the hazard.
- Never stop a tumble dryer before the end of the drying cycle unless all items are quickly removed and spread out so that the heat is dissipated.
- Openings must not be obstructed.
- Door filter and Base filter should be cleaned frequently.
- Lint must not be allowed to accumulate around the tumble dryer (heat exchanger, inside drum, around door etc.)

Safety with children

- This appliance is not intended for use by persons (including children) with reduced physical, sensory or mental capabilities or lack of experience and knowledge unless they have been given supervision or instruction concerning use of the appliance by a person responsible for their safety.
- Children should be supervised to ensure that they do not play with the appliance.
- Cleaning and user maintenance shall not be made by children without supervision.
- Animals and children may climb into the machine. Check the machine before every operation.
- Glass door may be very hot during the operation. Keep children and pets far away from the machine during the operation .

SAFETY INSTRUCTIONS

For use in EU countries :

- The appliance can be used by children aged from 8 years and above and persons with reduced physical, sensory or mental capabilities or lack of experience and knowledge if they have been given supervision or instruction concerning use of the appliance in a safe way and understand the hazards involved.
- Children of less than 3 years should be kept away unless continuously supervised.

UV Radiation Safety

- This warning only covers products which contain a UV-C lamp and which have a disinfection function with UV-C lamp.
- The device contains a lamp that emits UV-C rays. Do not look at the source of light while the lamp is operating!
- UV-C Lamp is used to provide disinfection in textile products.
- Do not take the UV-C Lamp out of the device and do not operate it outside!
- Do not touch the lamp!
- Use of the product except for its purpose or damage to the UV-C lamp protection glass or surrounding may cause dangerous UV-C radiation to occur. UV-C radiation can damage the eyes and skin even in low doses. Do not operate any product which is damaged!
- Do not remove the UV-C lamp protection glass. Do not operate the product without the UV-C lamp protection glass!

SAFETY INSTRUCTIONS

- In cases where UV-C lamp and related parts need to be replaced (expiration of lamp life, break of lamp glass, etc.), call the technical service. Do not try to replace the parts by yourself. When waiting for technical service, make sure the machine cover is closed and the plug is disconnected!
- Keep children away while using any programmes with activated UV-C Lamp!
- It can cause allergies, don't breathe directly!
- Always read the product guide before using the device and use the product according to the instructions!
- Hygiene programme incorporating UV is effective for removing *Escherichia coli*, *Staphylococcus aureus* bacteria.

SAFETY INSTRUCTIONS

ENVIRONMENT

Disposal of old appliances

For use in EU countries

This appliance is labelled in accordance with the European Directive 2012/19/EU on waste electrical and electronic equipment (WEEE). The directive provides the framework for the EU-wide take-back and recycling of waste equipment.



The devices marked with this symbol must not be disposed of in household waste!

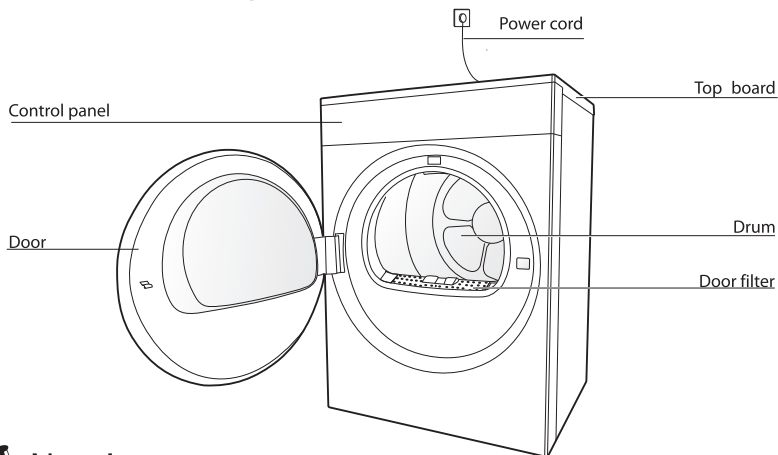
For use in other countries

This appliance doesn't have symbol above. If you want to dispose your appliance, please contact your local authority or retailer for further information on collection and disposal.

Model	Rated capacity
TD-T37BS100HWM(WT)	9.0kg

INSTALLATION

■ Product Description



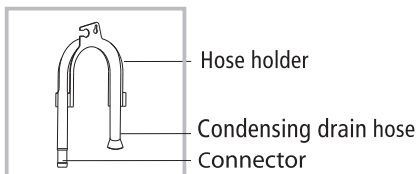
Note!

The product picture is for illustration only, please refer to real product as reference.

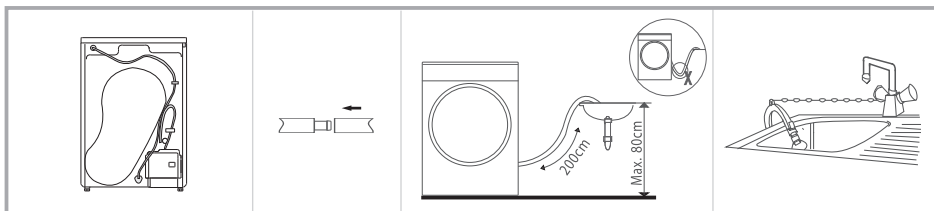
Accessories

The following parts are optional for specific models.

If your dryer has following parts, please wear gloves to install them as per the instruction below .



■ Installation



Take off the drain hose.

Insert the drain hose and the external drainage hose into the connector.

Put the hose holder in the washing basin or any other sink.

INSTALLATION

Transport

Move cautiously. Do not grasp any salient parts of machine. The machine door cannot be used as the handle for transport. If the dryer can't be transported erectly, the dryer can be tilted to right less than 30°.

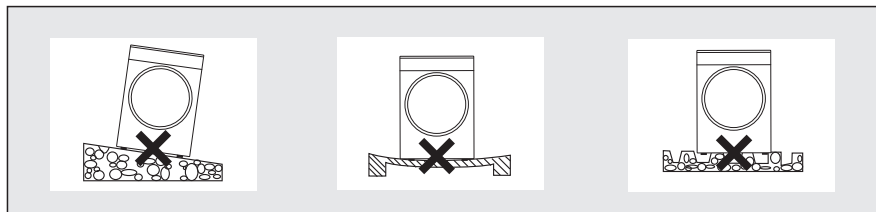
Risk of injury and damage!

Improper handling of the appliance may result in injury.

- This appliance should only be transported by two or more people holding the appliance securely.
- Remove all obstacles on the transport route and from the installation location, e.g. open doors and clear away objects lying on the floor.
- Do not use the open door as a handhold.
- Remove all package material before using the appliance.
- Before setting up the tumble dryer, check it for any externally visible damage. Do not install or use a damaged tumble dryer.
- Do not install the tumble dryer in a room where there is a risk of frost occurring. At temperatures around freezing point the tumble dryer may not be able to operate properly. There is a risk of damage if the condensed water is allowed to freeze in the pump and hoses.

Installation Place

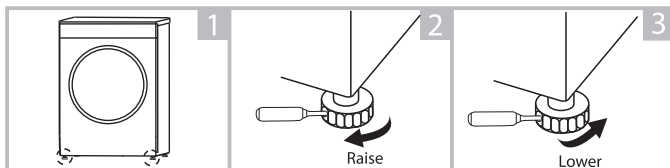
- Do not allow children to play with packaging materials.
 - The appliance must not be installed behind a lockable door, a sliding door or a door with a hinge on the opposite side to that of the tumble dryer, in such a way that a full opening of the tumble dryer door is restricted.
 - Do not restrict the floor clearance through deep pile carpets, strips of wood or similar. This might cause heat built-up which would interfere with the operation of the appliance.
1. It is recommended that, for your convenience, the machine is positioned close to your washing machine.
 2. The tumble dryer must be installed in a clean place, where dirt does not accumulate. Air must be able to circulate freely around the appliance. Do not obstruct the front air inlet or the air intake grilles at the back of the machine.
 3. To keep vibration and noise within minimum level when the dryer is in use, it must be placed on a firm and level surface.
 4. The feet must never be removed.



INSTALLATION

Level Adjusting

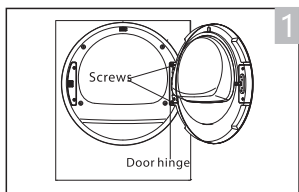
Once in its permanent operating position, check that the dryer is absolutely level with the aid of a spirit level. If it is not, adjust the feet by hand or using a tool.



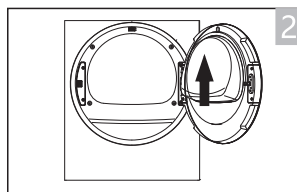
Power Supply Connection

1. Make sure that the voltage of the power supply is same as the electric specification.
2. Do not connect the dryer with the power connection board, a universal plug or socket, do not use multi-plug adapters and extension cables.

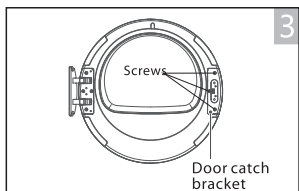
Door Adjustment Guidelines



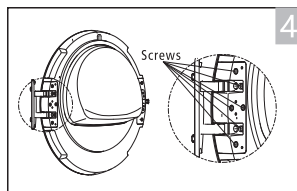
- Use an M 8mm socket to remove the two hexagonal bolts on one side of the door hinge. Due to the adhesive inside the screws, some force may be required to unscrew them.



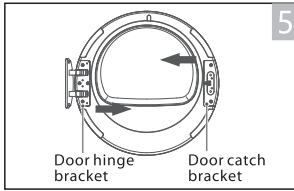
- After removing the bolts, because the door assembly is relatively heavy, it requires a partner to assist in lifting the entire door assembly slightly upwards and removing it from the metal front door panel. Be careful to avoid the glass being hit and broken.



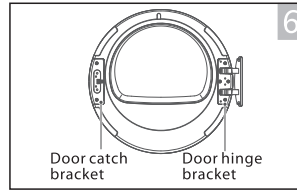
- In order to protect the appearance, first use a cotton cloth to pad the flat side of the door during installation. Use a PH2 screwdriver to remove the three black screws on one side of the door latch.



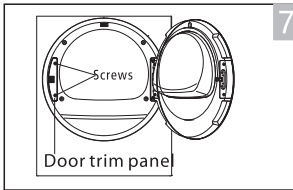
- Use a PH2 screwdriver to remove the 6 black screws on one side of the hinge, and pay attention to the distribution of the screws. There are 4 black screws on the front side, and 2 black screws on the side where the door is opened.



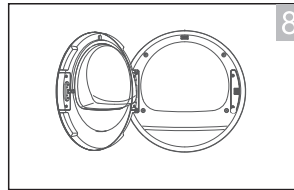
- Swap the installation positions of the door hook and the door hinge. Use a PH2 screwdriver to install the three screws on one side of the door latch. Use a PH2 screwdriver to install the 6 screws on one side of the hinge. Pay attention that there are 4 screws on the front side and 2 screws on the side where the door opens. Torque is 1.5N.m.



- After replacement, it will look like the above picture.



- Use a PH2 screwdriver to remove the two black screws on the front door trim panel.



- One partner assists in lifting the door assembly and hangs it on the metal front door panel from the left side. The partner needs to keep holding the door assembly. Use an M8mm socket to install the two hexagonal bolts on one side of the door hinge (Torque is 2.5N.m). Use a PH2 screwdriver to install the decorative panel on the other side (right side) and install two black screws (Torque is 1.5N.m). By following the above steps, the conversion from left-opening to right-opening door is achieved.

Note!

- After the replacement is completed, check whether the machine is running normally, whether there is an abnormal opening and closing sound, if there is an anomaly, contact the after-sales service.

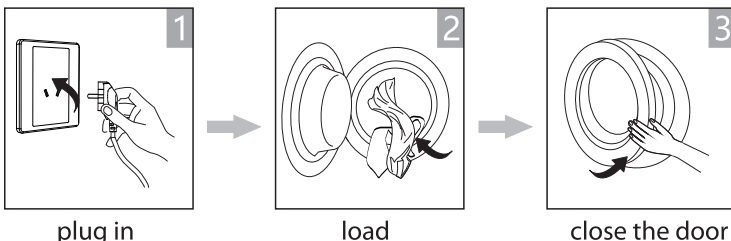
OPERATION

■ Quick Start

Note!

Before using, make sure the tumble dryer is installed correctly.

Before Drying



plug in

load

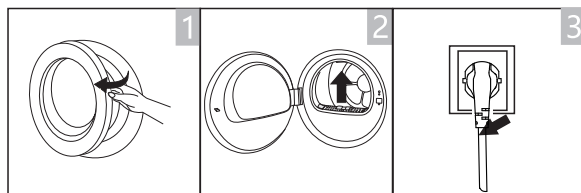
close the door

Drying



After Drying

Buzzer beep and "End" on display.



open the door and
take out laundry

clean the filter

power off

Note!

- If the socket with a switch is used, please press the switch to turn off the power directly.

OPERATION

■ Before Each Drying

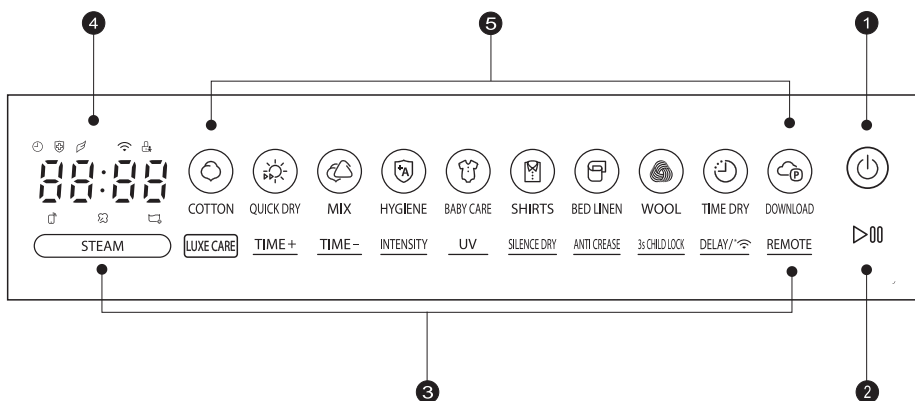
Note!

- Leave it to stand for 2 hours after transporting. Before first use, please use the soft fabric to clean the inside drum.
 1. Put some clean rags into the drum.
 2. Plug the power, press **【 ⏻ 】**.
 3. Select the **【 TIME DRY 】** Programme, press **【 ▶⏏ 】** button.
 4. After finishing this programme, please follow the “cleaning and care ” to clean the filter door.
- During drying, the compressor and the water will generate some noise which is entirely normal.

1. Before drying, thoroughly spin the laundry in washing machine. High spin speed shortens the drying time and saves energy.
2. For even drying result, sort the laundry according to fabric type and select the appropriate drying programme.
3. Before drying, please close zips, hooks and eyelets, buttons, tie fabric belts, etc.
4. Remove all objects from pockets such as lighters and matches.
5. Remove underwiring from bras.
6. Close duvet covers and pillow cases to prevent small items from being rolled up inside them.
7. Leave jackets open and undo any long zips so that textiles dry evenly.
8. Do not over dry the clothes, because over dried clothes can easily get creases.
9. Do not dry the articles containing rubber or similar elastic materials.
10. Keep the area around the tumble dryer clean. Coal dust or flour may cause an explosion.
11. The door can be opened only after the programme of the tumble dryer is finished to avoid being scalded by hot steam or hot drum.
12. Clean the door filter after each use to avoid extension of drying time and increase of energy consumption.
13. Do not dry clothes after dry-clean process.

OPERATION

■ Control Panel



1 On/Off

Product is switched on or off.

2 Start/Pause

Press the button to start or pause the drying cycle.

3 Option

These buttons are used for setting additional functions.

4 Display












The display shows the setting, estimated program time remaining and status messages of your dryer.

5 Programmes

Different drying cycles can be selected according to the users need and the type of laundry to be dried.

OPERATION

The reference weight of dry clothes (weight per item)

 Sweater (mixed 800g)	 Jacket (cotton 800g)	 Jeans (800g)	 Bath Towel (cotton 900g)
 Single bedsheet (cotton 600g)	 Work clothes (1120g)	 Pyjamas (200g)	 Shirt (cotton 300g)
 T-Shirt (cotton 180g)	 Underwear (cotton 70g)	 Socks (mixed-weave 50g)	

Note!

- Do not put more load than rated.
- Do not dry dripping wet laundry. The dryer might get damaged.

Only dry laundry suitable for tumble drying. Regard the laundry care labels:



Suitable for tumble drying.



Normal drying process : Dry under medium temperature.



Mild drying process: Dry under lower temperature.



Do not tumble dry: Articles unsuitable for drying in the tumbler.

OPERATION

■ Option



STEAM

By pressing the **【STEAM】** button, you can switch the steam On or Off, and adjust the steam intensity.

1. **【STEAM】** is optional for the following program: **【COTTON】** , **【BABY CARE】** , **【SHIRTS】** , **【MIX】** , **【UNDERWEAR】** and **【CHIFFON】** .
-

LUXE CARE

LUXE CARE

The LUXE CARE function can reduce or eliminate wrinkles in clothes by using steam, to make clothes more smooth and comfortable.

Users can select the corresponding program for luxe care based on the material of the clothing.

INTENSITY

INTENSITY

You can adjust the dryness level of the laundry by pressing the **【INTENSITY】** button.

1. The intensity function can be activated only before the program starts.
 2. Press the **【INTENSITY】** button repeatedly to adjust the drying grade.
 3. Except the **【WOOL】** , **【TIME DRY】** , **【HYGIENE】** , **【QUICK DRY】** , **【CHIFFON】** , **【WARM】** , **【COOL】** and all programs under **【LUXE CARE】** model, all the other programs can be adjusted with the **【INTENSITY】** function.
-

TIME+
TIME-

TIME+/TIME-

When the **【TIME DRY】** , **【HYGIENE】** , **【WOOL】** , **【WARM】** and **【COOL】** program is selected, the **【TIME+】** and **【TIME-】** buttons can be used to adjust the drying time.

UV

UV

After selecting the program, you can choose the "UV" function according to your needs. Press **【UV】** to select this function.

Press it again to cancel. After selecting the "Hygiene" function, the clothes are sterilized during the drying process, making the clothes cleaner and safer.

Use this function with caution for light, thin or delicate laundry.

OPERATION



SILENCE DRY

By pressing the **【SILENCE DRY】** button, you can switch the silence dry On or Off.

When the silence dry programme starts, the whole machine sounds quieter.



ANTI CREASE

At the end of the drying cycle, the anti-crease time is 30 minutes (default) or 120 minutes (selected). This function prevents the laundry from creases. The laundry can be removed during the anti-crease phase.

Except **【WOOL】**, **【QUICK DRY】**, **【CHIFFON】**, **【SELF CLEAN】**, **【PET CARE】**, **【SILK QUILT】** and **【REFRESH】**, all the other programs have this function.



3s CHILD LOCK

1. This machine incorporates a special child safety lock, which can prevent children from pressing buttons or operating unintentionally.
 2. When the dryer turn on, press the **【3s CHILD LOCK】** button at the same time for 3 seconds to start child lock function.
 3. To deactivate the child lock function, the **【3s CHILD LOCK】** button shall be pressed at the same time for 3 seconds.
-



DELAY

This function is used for delaying the end of the drying programme up to 24 hours. When the delayed programme starts, the time starts to countdown on the display and the delay icon lights.

1. Load your laundry and make sure the machine door is closed.
 2. Press the **【⏻】** button, then use the programme selector knob to select the desired programme.
 3. You can additionally select the **【INTENSITY】** or **【SILENCE DRY】** functions according to your need.
 4. Press the **【DELAY/🕒】** button to select the desired delay time.
 5. After the **【▶00】** button is pressed, the Dryer is at the running condition. The drying procedure will be automatically completed when the delay time is over.
 6. If you press the **【▶00】** button again, the delay function will be paused.
 7. If you want to cancel the "Delay" function, you can adjust the appointment time to 0 or press the **【⏻】** button.
-

OPERATION



WIRELESS NETWORK

Press **【DELAY/📶】** for 3 seconds to configure the network or reset the network.



REMOTE

This is the switch of remote control, if you want to use your smartphone to control the machine remotely, you need to press **【REMOTE】** button. Considering the safe operation of the machine, the smartphone remote control should meet the following conditions:










1. The appliance should connect to the internet;
2. The door of drum should be closed.

Remark:

- If the door is opened at anytime, the remote control function will be disabled.
 - The remote control function is turned off at the end of each cycle automatically, if you want to use remote control function again, you need turn on it again.
-

OPERATION

■ Display

	Child lock
	Wireless Network
	Anti crease
	UV
	Delay
	Steam water tank empty, please fill it.
	Steam
	Remote Control
	Remaining Time indicator/Error message



The wool drying cycle of this machine has been tested and approved by The Woolmark Company. The cycle is suitable to dry wool garments which are labelled “hand wash” provided that the garments are washed in a Woolmark endorsed hand washing cycle and dried according to the instructions issued by the manufacturer of this machine.
M2446: TD-T37BS100HWM(WT)

OPERATION

■ Programmes

Programme selector

1. When the LED display screen brightens up, press the display panel to select the desired programme.
2. Select the **【STEAM】**, **【TIME+】**, **【INTENSITY】**, **【UV】**, **【LUXE CARE】** or **【SILENCE DRY】** functions for additional options.
3. Press the **【▶⏸】** button.
4. Press the **【🔌】** button after the programme has completed.

Programme start

The drum will rotate after the programme starts, and the remaining programme time will be displayed.

Programme end

1. The drum will stop rotating after the programme ends. The display will show "End", Please press **【🔌】** button after unloading the tumble dryer to cut off power and pull out the plug.

OPERATION

■ Instructions to Connection with the TSmartLife App

Before you start, make sure that:

1. Your smartphone is connected to home wireless network , and you know the network password.
2. Make sure you are near the home appliance.
3. The 2.4GHz band wireless signal is enabled on your wireless router.

Follow the below steps to enter the remote control state

Download the TSmartLife App

On an app market (Google Play Store, Apple App Store), search for "TSmartLife" and find the TSmartLife app. Download and install it on your phone. You can also download the app by scanning the QR code below.



Register and log in

Open the TSmartLife app, and create a new account to start (you can also register through a third-party account). If you already had an existing account, use the account to log in.



Connect your devices to TSmartLife

- 1:Please make sure your mobile phone is connected to wireless network. If not, go to Settings and turn on the wireless connection, select and connect to a wireless network. Also please turn on the Bluetooth on your phone. If not, go to Settings and turn it on.
- 2:Please power on your devices.
- 3:Open TSmartLife app on your phone.

OPERATION

4: If a message of "Smart devices discovered nearby" appears, click to add.



5: If no message appears, select " + " on the page and select your device in the list of nearby devices available. If your device is not listed, please add your device manually by the device category and device model.




6: Connect your device to wireless network according to the instructions on app. If the connection fails, please follow the instructions provided by the app to continue with the operation.



OPERATION

Wireless Network Status Light

	Slowly flashing	Waiting for connection
	Quickly flashing	Connecting
	Quickly flashing solid	Connected to your wireless router

Notes

- Make sure your devices are powered on.
- Keep your mobile phone close enough to your device when you are connecting network to your device.
- Connect your mobile phone to the wireless network at home, and make sure you know the password of the wireless network.
- Check if your router supports 2.4 GHz wireless network band and turn it on. If you are not sure whether the router supports 2.4 GHz band, please contact the router manufacturer.
- The device cannot connect to the wireless network that requires authentication, and it usually appears in public area such as hotels, restaurants, etc. Please connect to a wireless network that does not require authentication.
- It is recommended to use a wireless network name that only contains letters and numbers. If your wireless network name contains special characters, please modify it in the router.
- Turn off the WLAN+ (Android) or WLAN Assistant (iOS) function of your mobile phone when connecting network to your devices.
- In the case that your device connected to wireless network before but it needs to reconnect, please click "+" on app Home page, and add your device again by the device category and model according to the instructions on app.

WIRELESS NETWORK INFORMATION

Working Frequency	2.4G
Extreme Temperature Range	-20°C~85°C
Max RF Power Output	Wireless Network: E.I.R.P 18dBm BT: 8dBm

OPERATION

■ Drying Programmes Table(* Programmes can be set in App)

Programme	Max Load	Application/Properties	
COTTON	9.0kg	For single or multi-layer cotton laundry .	
BABY CARE	1.0kg	To dry small amount of baby clothing	
BED LINEN	5.0kg	To dry bed linen, bed sheets or other large items.	
SHIRTS	1.0kg	For easy care laundry, such as shirts and blouses equipped with anti-crease function to minimize the ironing effort. Place clothes loosely in the dryer. Once dried, remove quickly and hang it on a clothes hanger.	
WOOL	1.0kg	For machine washable wool items .	
DOWNLOAD	—	You can set it as another program in the TsmartLife App and set the parameters, and sync it to the panel cloud program.	
TIME DRY	—	To dry individual items or complete the drying process of multi-layer fabrics with different drying behavior, such as jackets, pillows or voluminous items. Min 10 min. to max. 180min. (in 10 min. steps)	
HYGIENE	3.0kg	For sterilizing and mite removal of heat-resistant dry clothing.	
QUICK DRY	0.6kg	To dry 1-3 pieces of lightweight clothing with low moisture content.	
MIX	4.0kg	For mixed fabrics from cotton and synthetics.	
QUICK-DRY CLOTHING*	3.0kg	For quick drying of small amount of synthetic fibers.	
YOGA CLOTHING*	1.0kg	To dry yoga clothing made of synthetic fibers or cotton-linen materials.	
OUTDOOR*	2.0kg	To dry outdoor clothing, waterproof and breathable laundry items which are suitable for drying in tumble dryer.	
JEANS*	5.0kg	To dry jeans or leisure clothes that are spun at high speed in the washing machine.	
UNDERWEAR*	0.5kg	To dry underwear fabrics.	
CHIFFON*	1.0kg	To dry lightweight chiffon clothing.	
WARM*	1.0kg	Blow warm air into the dryer bucket to warm clothes, and the timing can be adjusted between 20 to 60 minutes.	
COOL*	—	Blow cold air into the dryer bucket, and the timing can be adjusted between 10 and 30 minutes.	
Luxe Care	COTTON	2.5kg	Suitable for mite removal, odor elimination, and wrinkle care of cotton clothing.
	BABY CARE	2.0kg	Suitable for mite removal, odor elimination, and wrinkle care of baby clothing.
	BED LINEN	2.0kg	To refresh clothes kept at closed environment for a long time or to remove odors.
	SHIRTS	0.5kg	Suitable for steam wrinkle care of shirts.
	WOOL	0.5kg	Suitable for dust and odor removal, and fluff care of wool clothing.
	SELF CLEAN*	—	Used for cleaning the inner drum (without any clothes inside).
	PET REFRESH*	2.0kg	Suitable for sterilization and mite removal of pet clothes or supplies.
	SILK QUILT*	2.0kg	Suitable for dehumidification, mite removal, and fluff care of silk summer quilts.
REFRESH*	2.5kg	To refresh clothes kept at closed environment for a long time or to remove odors.	

OPERATION

Programme	DELAY	STEAM	SILENCE DRY	INTENSITY	TIME	UV	ANTI CREASE
COTTON	Y	Y	Y	Y	N	Y	Y
BABY CARE	Y	Y	Y	Y	N	Y	Y
BED LINEN	Y	N	Y	Y	N	Y	Y
SHIRTS	Y	Y	Y	Y	N	Y	Y
WOOL	Y	N	N	N	Y	N	N
TIME DRY	Y	N	Y	N	Y	N	Y
HYGIENE	Y	N	N	N	Y	●	Y
QUICK DRY	Y	N	N	N	N	N	N
MIX	Y	Y	Y	Y	N	Y	Y
QUICK-DRY CLOTHING*	Y	N	N	Y	N	N	Y
YOGA CLOTHING*	Y	N	N	Y	N	N	Y
OUTDOOR*	Y	N	N	Y	N	N	Y
JEANS*	Y	N	Y	Y	N	Y	Y
UNDERWEAR*	Y	Y	Y	Y	N	Y	Y
CHIFFON*	Y	Y	N	N	N	N	N
WARM*	Y	N	Y	N	Y	Y	Y
COOL*	Y	N	N	N	Y	N	Y
Luxe Care	COTTON	Y	●	N	N	N	Y
	BABY CARE	Y	N	N	N	N	Y
	BED LINEN	Y	●	N	N	N	Y
	SHIRTS	Y	●	N	N	N	Y
	WOOL	Y	●	N	N	N	Y
	SELF CLEAN*	Y	●	N	N	N	●
	PET REFRESH*	Y	N	N	N	N	N
	SILK QUILT*	Y	N	N	N	N	N
REFRESH*	Y	●	N	N	N	N	



Note!

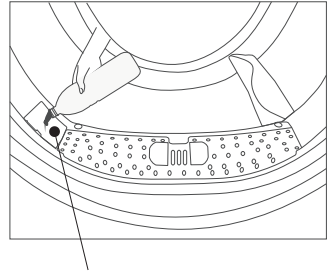
● means that the program comes with this feature by default.

OPERATION

■ Steam Function

Only use purified water for [STEAM] function.

If the [🔊] icon is blinking, please open the water inlet cap at the left of the door filter and add the purified water until the indicator disappears. Then close the inlet cap. It is suggested to add about 350ml of purified water. The maximum capacity of the tank is 1000ml.



Water inlet

Note!

- When using a program with steam function for the first time, a buzzing sound is normal.

Warning: Hot steam!

There will be hot steam, please use the appliance carefully.

MAINTENANCE

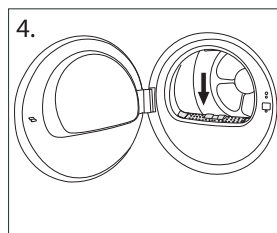
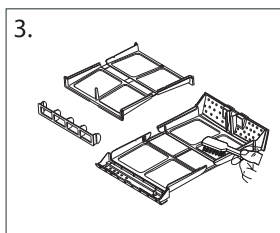
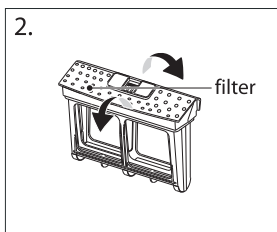
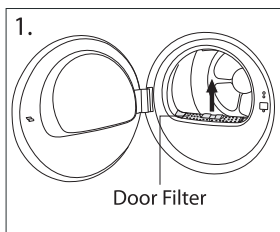
■ Cleaning and Care

Clean the filters

This dryer has a primary door lint filter.

Make sure you clean the door filter after each cycle to avoid increased energy consumption and cycle time.

Clean the door filter



1. Open the door and take out the door filter.
2. Open the filter.
3. Remove the fluff on the filter screen. You can use a vacuum cleaner to remove the lint or clean it by hand.
4. Dry the door filter thoroughly before installing it back. Throw lint in the garbage bin and do not wash it down the drain to avoid micro plastics in the used water system.

Note!

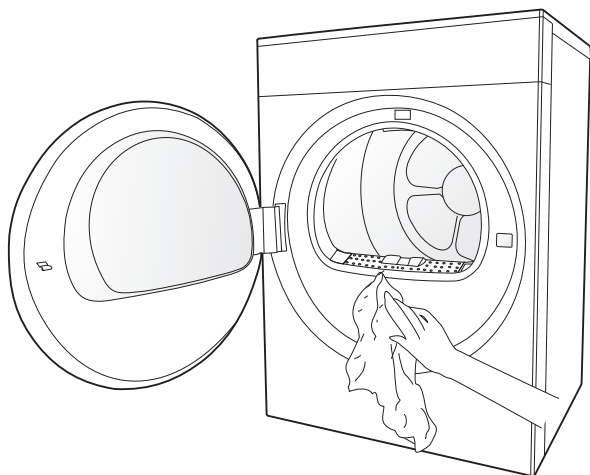
- Take notice of the correct orientation before to insert the door filter.

MAINTENANCE

Clean Tumble dryer

Warning!

- Disconnect the power cord before cleaning!
- Clean the dryer with a wet cloth which is only dampened by clean water.
- Do not use solvents, abrasive cleaners, glass cleaners or all-purpose cleaners. These could damage plastic surfaces and other parts.



- Prepare a wet cloth dampened by clean water.
- Clean the door, especially the inside window.
- Clean the sealing around the door opening.
- Clean the humidity sensor inside the drum.
- Take out all the filters, clean the sealing and air flow openings.
- Before starting the dryer, dry all parts with a soft cloth.

MAINTENANCE

■ Trouble Shooting

If you encounter an issue with the dryer, first check the table below and try to solve the issue before calling the service.

Problem	Solution
•Display is not on	<ul style="list-style-type: none">•Check if the power supply works.•Check if power plug is inserted in wall socket correctly.•Check if dryer is turned on.
•Dryer does not start	<ul style="list-style-type: none">•Check if the power supply works.•Check if power plug is inserted in wall socket correctly.•Check if dryer is turned on.•Check if door is closed correctly.•Check if 【▷00】 is pressed.
•Cloths are not dried or drying time is too long	<ul style="list-style-type: none">•Clean Door filter.•Clean air inlet.•Check if installation place is proper.
•There are humming noises	<ul style="list-style-type: none">• The compressor is operating. These noises are quite normal and do not indicate a fault.
• The dryer switches off at the end of the programme	<ul style="list-style-type: none">• The dryer switches off automatically after the end of operation. This is not an error but a normal function.



Warning!

If the issue continues after trying the solutions, turn off dryer and disconnect power plug, then call the service.

MAINTENANCE

Display	Reason	Solutions
"E20"	Water pump failure or water level sensor failure	Please contact your local service center if the problem occurs.
"E32"	Humidity sensor error	
"E33"	Temperature sensor error	
"E64"	BLDC motor communication error	
"E82"	PCB communication error	

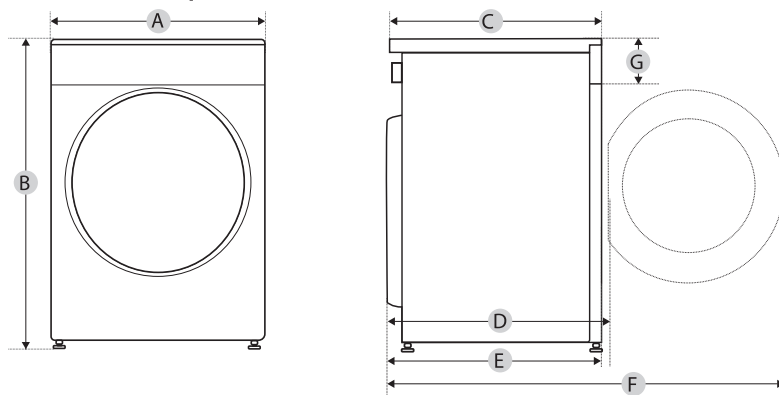


Warning!

- Self-repair or non-professional repair may create safety risk and cease the guarantee.

MAINTENANCE

■ Technical Specifications



Model	TD-T37BS100HWM(WT)
Power Supply	220-240V~,50Hz
Rated input power	1600W
Rated capacity	9.0kg
Refrigerant	R134a
Weight	53kg
GWP	1430
CO ₂ e	0.372t
Quantity of refrigerant	260g
Ambient temperature	+2°C ~ +35°C
Dimension	
A	595mm
B	850mm
C	573mm
D	615mm
E	598mm
F	1110mm
G	120mm

Contains fluorinated greenhouse gases covered by the Kyoto Protocol.
Hermetically sealed.

Note!

- The rated capacity is the maximum load quantity in kg dry weight that can be dried at one time. Make sure that the laundry loaded into the appliance does not exceed the rated capacity.
- Do not install the tumble dryer in a room when there is a risk of frost occurring. At temperatures around freezing point the tumble dryer may not be able to operate properly.
- There is a risk of damage if the condensed water is allowed to freeze in the pump and hoses.