

# TOSHIBA

## FRONT LOADING WASHER DRYER

### OWNER'S MANUAL

**MODEL:**  
**TWD-T39BZP130MWS(WW)**

Read this Manual 

Read all instructions and explanations for the installation before use. Follow the instructions carefully. Keep the operation instructions handy for later use. If the appliance is sold or passed on, ensure that the new owner always receives this operation instructions.

# CONTENTS

---

## SAFETY INSTRUCTIONS

■ Safety Instructions .....	2
-----------------------------	---

## INSTALLATION

■ Product Description .....	11
■ Installation .....	13

## OPERATIONS

■ Quick Start .....	19
■ Before Each Washing .....	20
■ Detergent Dispenser .....	21
■ Control Panel .....	22
■ Option.....	23
■ Other Functions.....	25
■ Parameter Adjustment.....	26
■ Instructions to Connection with the TSmartLife App.....	27
■ Programs.....	30
■ Washing Programs Table.....	34

## MAINTENANCES

■ Cleaning and Care .....	38
■ Trouble Shooting .....	43
■ Technical Specifications .....	44

# SAFETY INSTRUCTIONS

---

## ■ Safety Instructions

For your safety, the information in this manual must be followed to minimize the risk of fire or explosion, electric shock, or to prevent property damage, personal injury or loss of life.

Explanation of the symbols:



### **Warning!**

This combination of symbol and signal word indicates a potentially dangerous situation which may result in death or serious injuries unless it's avoided.



### **Caution!**

This combination of symbol and signal word indicates a potentially dangerous situation which may result in slight or minor injuries or damage to property and the environment.



### **Note!**

This combination of symbol and signal word indicates a potentially dangerous situation which may result in slight or minor injuries.



### **Warning!**

## ELECTRIC SHOCK HAZARD

- If the supply cord is damaged, it must be replaced by the manufacturer, its service agent or similarly qualified persons in order to avoid a hazard.
- If the machine is damaged, it must not be operated unless repaired by the manufacturer, its service agent or similarly qualified persons. Risk of electric shock!

# SAFETY INSTRUCTIONS

---

- Before maintenance, unplug the appliance.
- This appliance must be grounded. In the event of Malfunction or breakdown, grounding will reduce the risk of electric shock by providing a path of least resistance for electric current.
- This appliance is equipped with a cord having an equipment-grounding conductor and grounding plug. The plug must be plugged into an appropriate outlet that is properly installed and grounded in accordance with all local codes and ordinances.
- Improper connection for the appliance when using not grounded outlet or when GND terminal of outlet is not suitable with GND terminal of power plug, can result in risk of electric shock. Check with a qualified electrician or service person if you are in doubt as to whether the appliance is properly grounded.
- Do not modify the plug provided with the appliance. If it does not fit the outlet, have a proper outlet installed by a qualified electrician.
- Make sure that the water and electrical devices must be connected by a qualified technician in accordance with the manufacturer's instructions and local safety regulations.
- Pull out its plug from the power socket before cleaning or maintenance.
- Do not use any socket with rated current less than that of appliance. Never pull out power plug with wet hand.
- Please remember to disconnect water and power supply immediately after the clothes are washed.

# SAFETY INSTRUCTIONS

---

## RISK TO CHILDREN

- This appliance is not intended for use by persons (including children) with reduced physical, sensory or mental capabilities or lack of experience and knowledge unless they have been given supervision or instruction concerning use of the appliance by a person responsible for their safety.
- Children should be supervised to ensure that they do not play with the appliance.
- Cleaning and user maintenance shall not be made by children without supervision.
- Animals and children may climb into the machine. Check the machine before every operation.
- Glass door may be very hot during the operation. Keep children and pets far away from the machine during the operation.

For use in EU countries :

- The appliance can be used by children aged from 8 years and above and persons with reduced physical, sensory or mental capabilities or lack of experience and knowledge if they have been given supervision or instruction concerning use of the appliance in a safe way and understand the hazards involved.
- Children of less than 3 years should be kept away unless continuously supervised.

# SAFETY INSTRUCTIONS

---

## RISK OF EXPLOSION

- Do not wash articles that have been cleaned in, washed in, soaked in, or spotted with combustible or explosive substances (such as wax, oil, paint, gasoline, degreasers, dry-cleaning solvents, kerosene, etc.) This may result in fire or explosion.
- The washer is not to be used if industrial chemicals have been used for cleaning.

## INSTALLATION LOCATION AND SURROUNDING

- All washing and additional substances are to be kept in a safe place out of the reach of children.
- Do not install the machine on a carpet floor. The obstruction of the openings by a carpet can damage the machine.
- Keep the appliance clear from heating sources and direct sunlight to avoid plastic and rubber parts to corrode.
- Do not use the appliance in humid environments or rooms containing explosive or caustic gas. In case of water leakage or water splashes let the appliance dry in the open air.
- The appliance must not be installed behind a lockable door, a sliding door or a door with a hinge on the opposite side to that of the washer dryer.
- Do not operate the machine in rooms with a temperature of below 5°C. This can cause damages to parts of it. If it is unavoidable, make sure to drain the water completely from the appliance after every use (see „Maintenance - Cleaning of drain pump filter“) to avoid damages caused by frost.
- Never use flammable sprays or substances in the immediate proximity of the appliance.

# SAFETY INSTRUCTIONS

---

## INSTALLATION

- Remove all packaging material and transport bolts before using the appliance. Otherwise, serious damage may result.
- This appliance is equipped with a single inlet valve and can be connected to the cold water supply only.
- Mains plug must be accessible after installation.
- Before washing clothes for the first time, the product shall be operated once throughout all the procedures without any clothes inside.
- Before using the washer dryer, the product shall be calibrated.
- Do not put any excessively heavy objects on the appliance, like water containers or heating devices.
- The new hose-sets supplied with the appliance are to be used and that old hose-sets should not be reused.
- Max. Inlet water pressure 1 MPa.  
Min. inlet water pressure 0.05 MPa.

## ELECTRICAL CONNECTION

- Make sure the supply cable is not trapped by the machine, it can get damaged.
- Connect the product to a grounded outlet protected by a fuse complying with the values in the “Technical specifications” table. The grounding installation has to be made by a qualified electrician. Ensure that the machine is installed in accordance with the local regulations.
- Water and electrical connections must be carried out by a qualified technician in accordance with the manufacturer's instructions and local safety regulations.
- Don't use multiple plugs or extension cords.
- The appliance must not have an external switching device such as a timer or connected to a circuit that is regularly switched on and off.
- Do not pull the plug out of the mains outlet if there is flammable gas around.
- Never pull out power plug with wet hands.
- Always pull at the plug, not at the cable.
- Always unplug the appliance if it is not being used.

# SAFETY INSTRUCTIONS

---

## WATER CONNECTIONS

- Check the connections of the water inlet hose, the water tap and the outlet hose for possible problems due to changes of water pressure. If the connections loosen or leak close the water tap and get it repaired. Do not use the appliance before the pipes and hoses are installed properly by qualified persons.
- The water inlet and outlet hoses have to be safely installed and remain undamaged. Otherwise, water leakage can occur.
- Do not remove the drain pump filter while there is still water in the appliance. Big quantities of water can leak out, and there is a risk of scalding due to hot water.

## RISK OF DAMAGING APPLIANCE

- Your product is only for home use and is only designed for the textiles suitable for machine washing.
- Do not climb up and sit on top cover of the machine.
- Do not lean against machine door.
- Please do not close the door with excessive forces. If it is found difficult to close the door, please check if clothes are put in or distributed well.
- It is forbidden to wash carpets.



# SAFETY INSTRUCTIONS

---

## OPERATION AND MAINTENANCE

- Never stop the washer dryer before the end of the drying cycle unless all items are quickly removed and spread out so that the heat can dissipate.
- The washer dryer is not to be used if industrial chemicals have been used for cleaning. Risk of explosion.
- Hands shall not be inserted into running drums.
- Before washing the clothes at first time, the product shall be operated in one round of the whole procedures without the clothes inside. The suggested program is "DAILY CLEANING".
- Never use any flammable, explosive or toxic solvents. Do not use gasoline and alcohol etc. as detergents. Only select detergents that are suitable for washer dryer.
- Make sure that all pockets are emptied. Sharp and rigid items such as coins, brooches, nails, screws, stones etc. may cause serious damages to this machine.
- Remove all objects from pockets such as lighters and matches before use the appliance.
- Do not dry unwashed items in the appliance.
- Items that have been soiled with substances such as cooking oil, acetone, alcohol, petrol, kerosene, spot removers, turpentine, wax and wax removers should be washed in hot with an extra amount of detergent before being dried in the appliance.
- Items containing foam rubber (latex foam), shower caps, water proof textiles, rubber backed articles and clothes or pillows fitted with foam rubber pads should not be dried in the machine
- Fabric softeners or similar products should be used as recommended in their instructions.
- Never try to open the door forcefully. The door will unlock shortly after the end of a cycle.
- Please do not close the door with excessive force. If it is found difficult to close the door, please check if the clothes are properly inserted and distributed.
- Please check whether the water inside the drum has been drained before opening its door. Please do not open the door if there is any water visible.
- Be careful of burning when the product drains hot washing water.
- Never refill the water by hand during washing.
- After program is completed, Please wait for two minutes to open the door.

# SAFETY INSTRUCTIONS

---

- Always unplug the appliance and close the water tap before cleaning and maintenance and after each use.
- Never pour water over the appliance for cleaning purpose. Risk of electric shock!
- Repairs shall only be carried out by the manufacturer, its service agent or similarly qualified persons in order to avoid a hazard. The producer will not be responsible for damages caused by the intervention of not authorized persons.

## TRANSPORT

- Before Transport:
  - Bolts shall be reinstalled to the machine by a specialized person
  - Accumulated water shall be drained out of the machine
- This appliance is heavy. Transport with care. Never hold any protruding part of the machine when lifting. The machine door cannot be used as a handle.

## INTENDED USE

- The product is intended only for home use and for textiles in household amounts suitable for machine washing and drying. This appliance is for indoor use only and not intended for built in use. Only use according to these instructions. The appliance is not intended for commercial use.
- Any other use is considered as improper use. The producer is not responsible for any damage or injuries that may result of it.
- This appliance is intended to be used in household and similar applications such as:
  - Staff kitchen areas in shops, offices and other working environments;
  - Farm houses;
  - By clients in hotels, motels and other residential type environments;
  - Bed and breakfast type environments;

# SAFETY INSTRUCTIONS

---

## ENVIRONMENT

### **Disposal of old appliances**

For use in EU countries

This appliance is labelled in accordance with the European Directive 2012/19/EU on waste electrical and electronic equipment (WEEE). The directive provides the framework for the EU-wide take-back and recycling of waste equipment.



---

**The devices marked with this symbol  
must not be disposed of in household waste!**

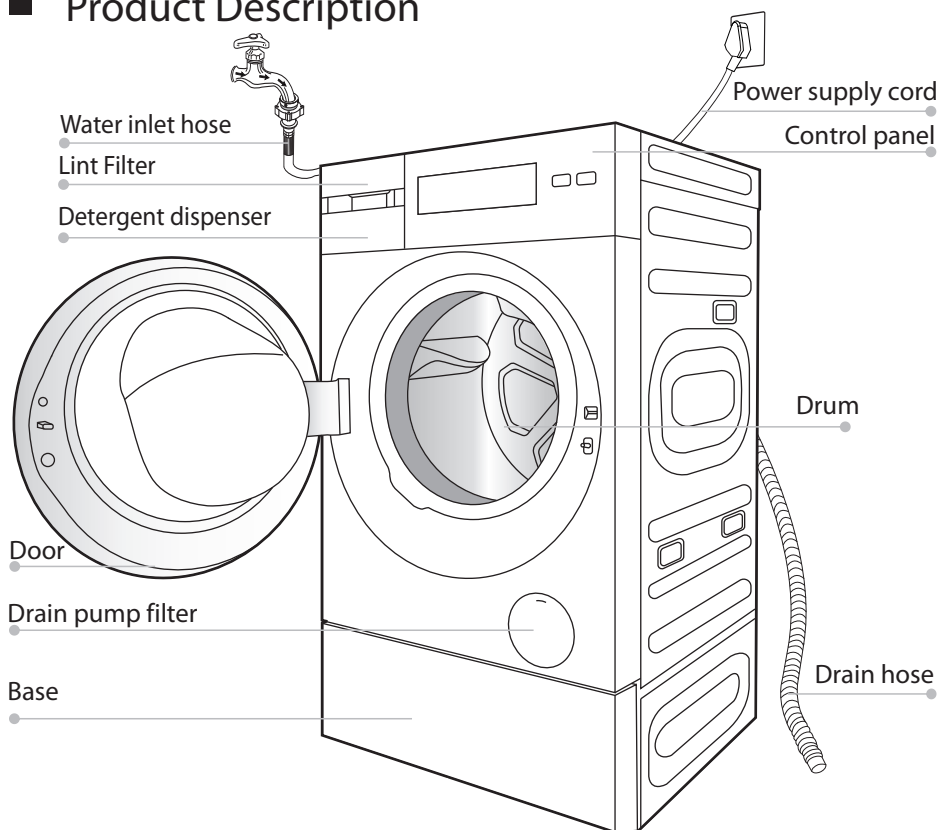
---

For use in other countries

This appliance doesn't have symbol above. If you want to dispose your appliance, please contact your local authority or retailer for further information on collection and disposal.

# INSTALLATION

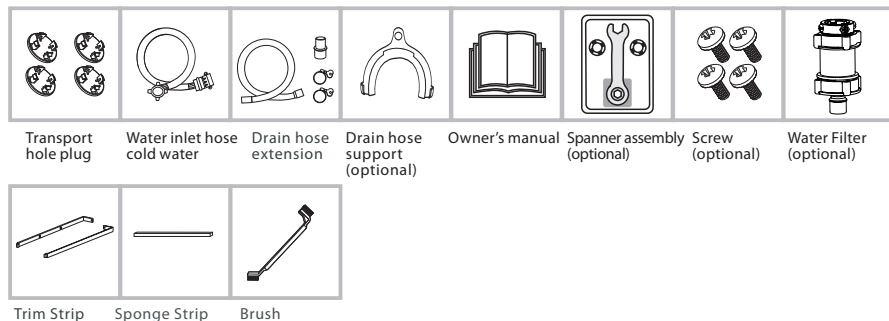
## ■ Product Description



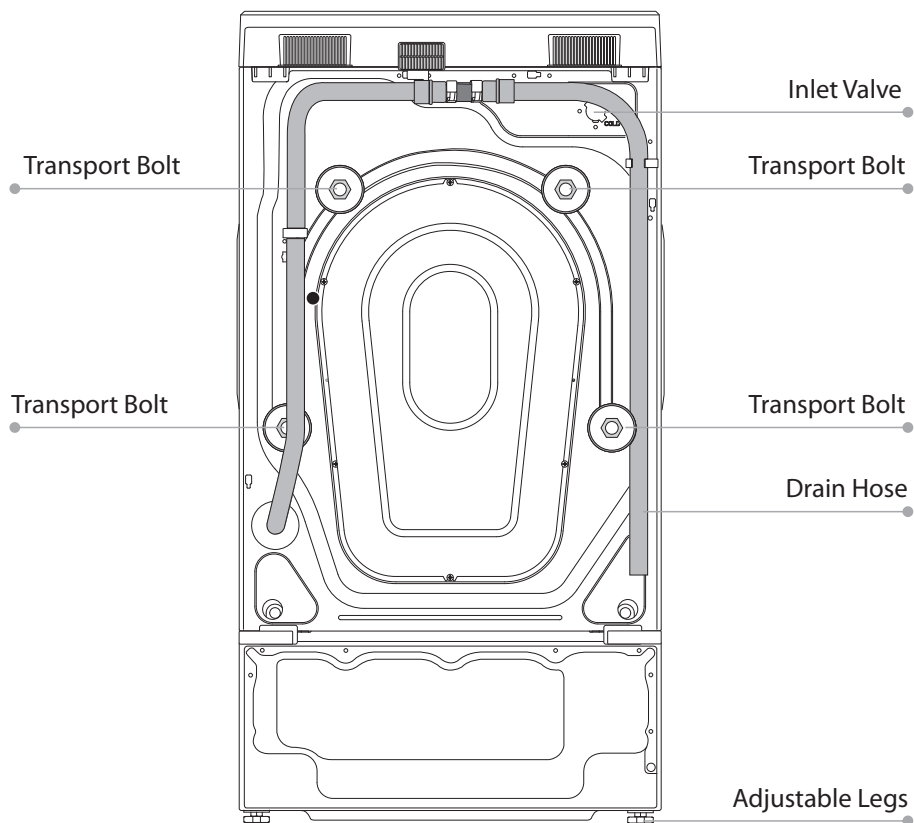
### **Note!**

- The product line chart is for reference only, please refer to real product as standard.

## Accessories



# INSTALLATION



## **Note!**

- The product line chart is for reference only, please refer to real product as standard.

# INSTALLATION

## ■ Installation

### Installation area



#### Warning!

- Stability is important to prevent the product from wandering!
- Make sure that the product should not stand on the power cord.

Before installing the machine, the location characterized as follows shall be selected:

1. Rigid, dry, and level surface
2. Avoid direct sunlight
3. Room temperature is above 5 °C
4. Keep far away from the heat resources such as coal or gas.

### Unpacking the washing machine



#### Warning!

- Packaging material (e.g. Films, Styrofoam) can be dangerous for children.
- There is a risk of suffocation ! Keep all packaging well away from children.

1. Remove the cardboard box and styrofoam packing.
2. Lift the washing machine and remove the base packing.

Make sure the small triangle foam is removed with the bottom one together. If not, lay the unit down with side surface, then remove the small foam from the unit bottom manually.

3. Remove the tape securing the **power supply cord and drain hose**.
4. Remove the water inlet hose and other accessories from the drum.

### Remove transport bolts

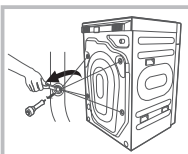
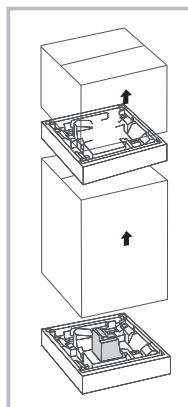
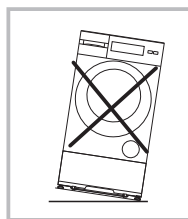


#### Warning!

- You must remove the transport bolts from the backside before using the product.
- You'll need the transport bolts again if you move the product, so make sure you keep them in a safe place.

Please take the following steps to remove the bolts:

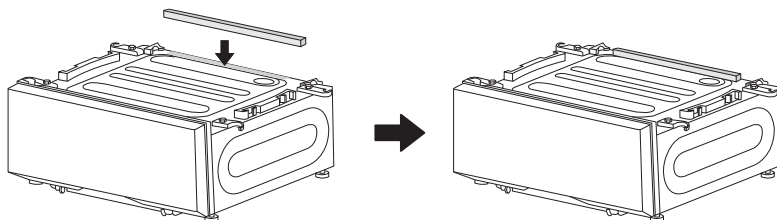
1. Loosen 4 bolts with spanner and then remove them.
2. Cover the hole with transport hole plugs.
3. Keep the transport bolts properly for future use.



# INSTALLATION

---

## Attach the sponge



Remove the backing from the sponge strip and attach it to the area indicated by the arrow

Finished

# INSTALLATION

## Levelling the Washer Dryer

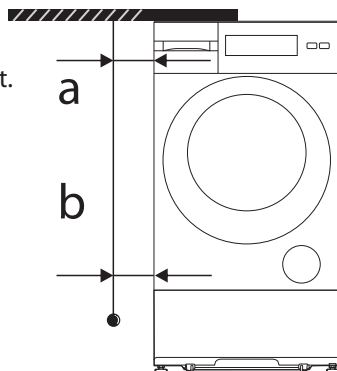


### Warning!

- Check with the gradienter if the machine placement is balanced and steady.
- If there is no gradienter, check the balance as per the following method.

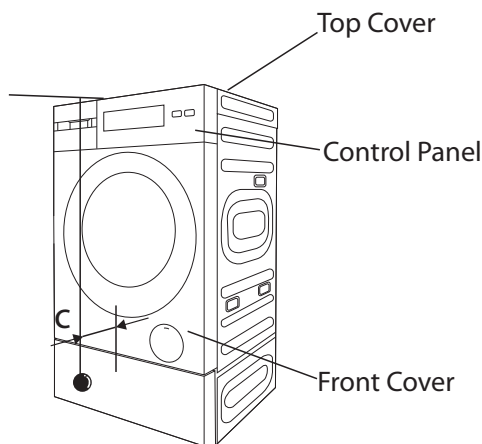
#### 1. If it's balanced from left to right.

- Take a long stick, and tie a rope at the end of it. Bind a heavy object at the end of the rope.
- Hang the rope from the top cover of the machine. Adjust the legs till the difference between 'a' and 'b' is less than 1cm.



#### 2. If it's balanced from front to back

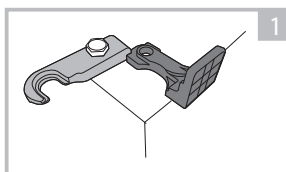
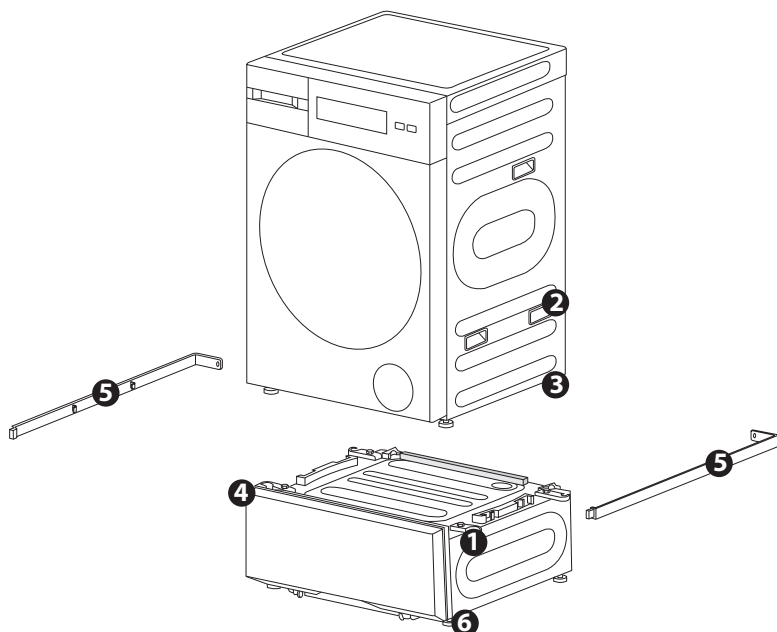
- Put the stick at the middle of the control panel, and hang the rope in front of the machine.
- Keep 10cm away from the rope end to the control panel edge. Adjust the legs till 'c' is 9.5~10.5cm ('c' is the distance from rope to bottom of front cover ).





# INSTALLATION

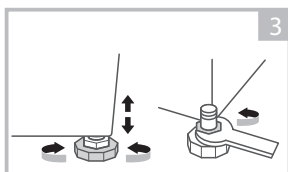
## Levelling the Washer Dryer



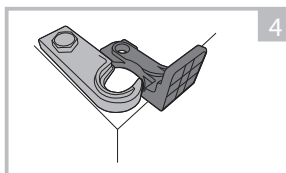
Loosen the 4 locking clips on the base.



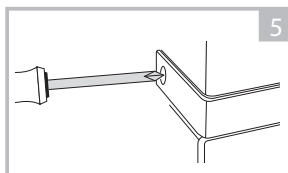
Two people should lift the machine and align it with the base, then observe the fit of the partition.



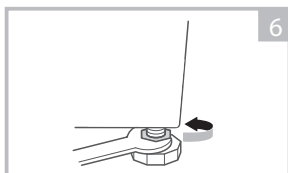
Loosen the 4 feet at the bottom of the machine, press them firmly against the base, and then tighten the foot nuts.



Tighten the clips.



Install the side trim strips and tighten the screws.



Refer to step 3 and adjust the 4 feet at the bottom.

# INSTALLATION

## Connect Water Inlet Hose

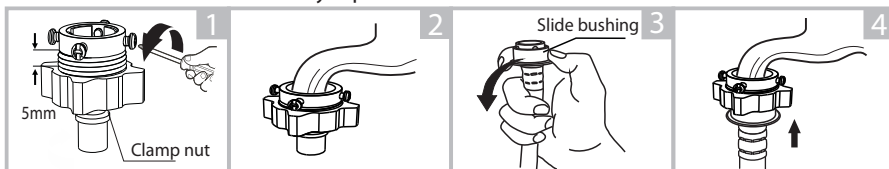


### Warning!

- To prevent leakage or water damage, follow the instructions in this chapter!
- Do not kink, crush, or modify water inlet hose.

Connect the water inlet hose as indicated, there are three ways to connect the water inlet hose.

#### 1. Connection between ordinary tap and water inlet hose.



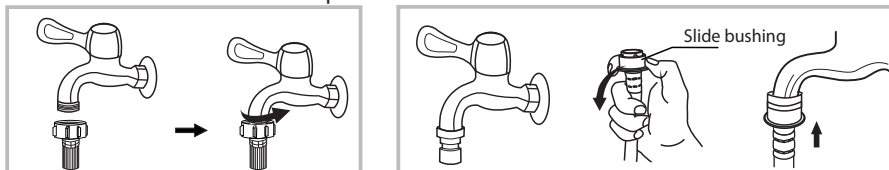
Loosen clamp nut and four bolts

Press the tap end tightly to the rubber ring inside the clamp, and then, tighten the 4 bolts

Press slide bushing, insert water inlet hose into connecting base

Connection finished

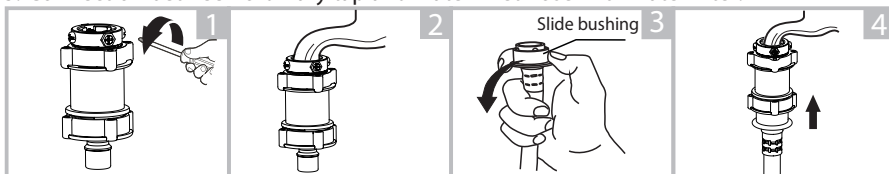
#### 2. Connection between screw tap and water inlet hose.



Tap with threads and water inlet hose

Special tap for washing machine

#### 3. Connection between ordinary tap and water inlet hose with water filter.



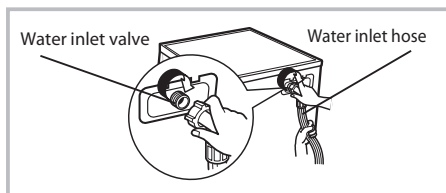
Loosen clamp nut and four bolts

Press the tap end tightly to the rubber ring inside the clamp, and then, tighten the 4 bolts

Press slide bushing, insert water inlet hose into connecting base

Connection finished

Connect the other end of water inlet hose to the inlet valve at the backside of product and fasten the hose tightly clockwise.



# INSTALLATION

## Drain Hose

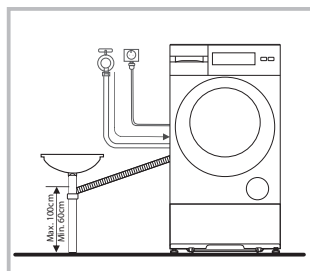
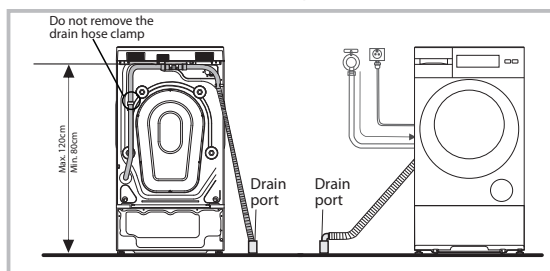


### Warning!

- Do not kink or protract the drain hose.
- Position drain hose properly, otherwise damage might result of water leakage.

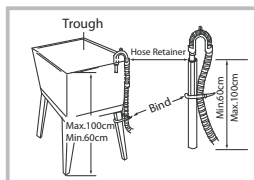
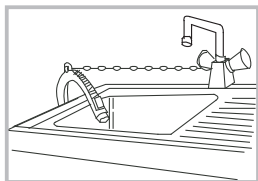
There are two ways to place the end of drain hose:

1. Put it into the drain port. If the drain hose is put into the drain hole on the floor, fix the drain hose on the back of the appliance to prevent water overflow from the drum.
2. Connect it to the branch drain hose of the trough.



### Note!

- If the machine has drain hose support, please install it like the following.



### Warning!

- When installing drain hose, fix it properly with a rope.
- If drain hose is too long, do not force it into washing machine as it will cause abnormal noises.

# OPERATIONS

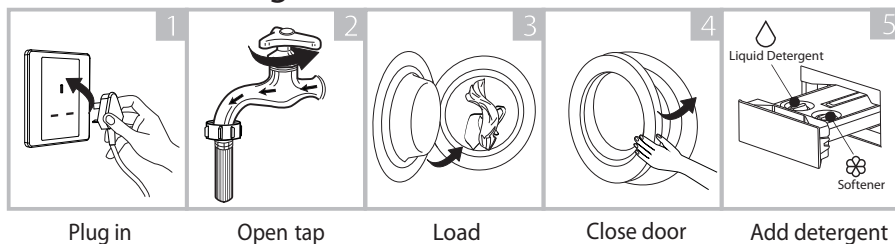
## ■ Quick Start



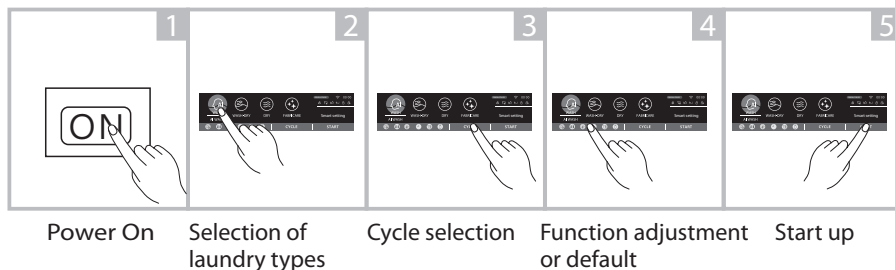
### Caution!

- Before washing, please make sure it's installed properly.
- Before washing at first time, the washer dryer shall be operated in one round of the whole procedures without clothes in as follows. The suggested program is "DAILY CLEANING" or "DEEP CLEANING".

## 1. Before Washing



## 2. Washing



### Note!

- If default is selected, step 4 can be skipped.

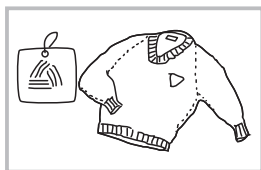
## 3. After Washing

"COMPLETE" on display.

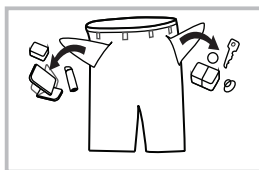
# OPERATIONS

## ■ Before Each Washing

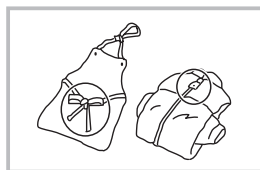
- The working condition of the washer dryer should be 5°C-40°C. If used under 0°C, the inlet valve and draining system may be damaged. If the machine is placed under condition of 0°C or less, then it should be transferred to normal ambient temperature to ensure the water inlet hose and drain hose are not frozen before use.
- Please check the labels and the explanation of using detergent before wash. Use non-foaming or less-foaming detergentsuitable forwashingmachine properly.



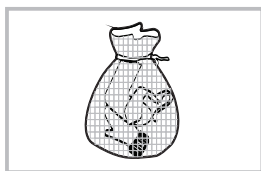
Check the label



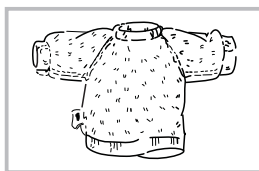
Take out the items out of the pockets



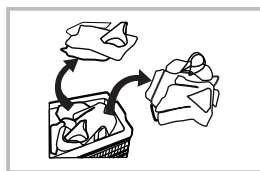
Knot the longstrips,zip or button



Put small clothes into the pillow slip



Turn easy-pilling and long-pile fabric inside out



Separate clothes with different textures



### Warning!

- When washing a single clothes, it may easily cause great imbalance and give alarm. Therefore it is suggested to add one or two more clothes to be washed together so that washing process can be done smoothly.
- Don't wash the clothes soaked in kerosene, gasoline, alcohol and other flammable materials.
- Do not wash, spin, or dry water-proof seats, mats, or clothing.

# OPERATIONS

## ■ Detergent Dispenser

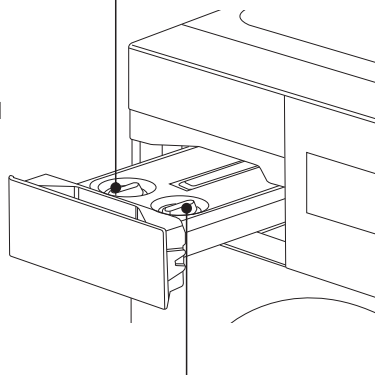


### Caution!

- This machine features an automatic dosing drawer that can store a certain amount of detergent and fabric softener, eliminating the need to add them each time;
- Please place laundry pods directly into the drum with the clothes, do not place them in the automatic dosing drawer to avoid clogging the dispensing port; when using laundry pods, please turn off the automatic dosing function;
- For clumped or viscous detergents or additives, it is recommended to dilute with a small amount of water before pouring into the dispenser;
- Please select the correct dispenser opening for adding, incorrect addition may result in foam residue, and clothes may not be cleaned properly;
- Please ensure the dispenser is properly closed before starting the machine, and do not open the dispenser during operation to prevent water or foam from overflowing.

### Liquid Detergent (Sense Dose)(MAX:≈490ml)

- Please choose a low-foam detergent, as high foam can cause incomplete rinsing or foam overflow and leakage;
- For particularly thick laundry detergent, it is recommended to dilute it according to the actual situation before use;
- When the machine is powered on, it will automatically detect the detergent level. If the automatic dispensing icon ① appears on the home screen, it indicates that the detergent in the automatic dispensing box is insufficient. Please open the cap and add detergent;
- After adding detergent, please make sure to tighten the cap.



### Softener (Sense Dose)(MAX:≈520ml)

- The machine will dispense softener during the final rinse cycle. Please do not add detergent to this dispensing port;
- Softener can neutralize the residue of laundry detergent and powder to a certain extent;
- When the machine is powered on, it will automatically detect the softener level, and the automatic dispensing icon ① will be displayed on the home screen, indicating that there is softener in the automatic dispensing box. If the softener level is low, please open the cap and add softener;
- After adding the softener, please make sure to close the cap.



### Note!

- Use laundry powder or laundry pods (Sense Dose must be turned off).



Touch ① lightly Enter, select to turn off sense dose.

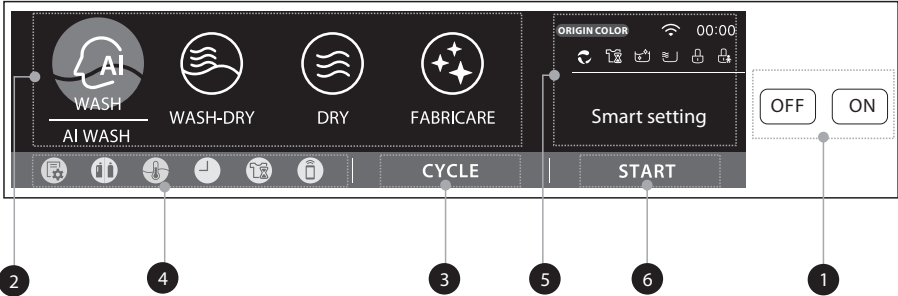


Place the laundry gel pods or powder in the drum along with the clothes.

# OPERATIONS

## ■ Control Panel

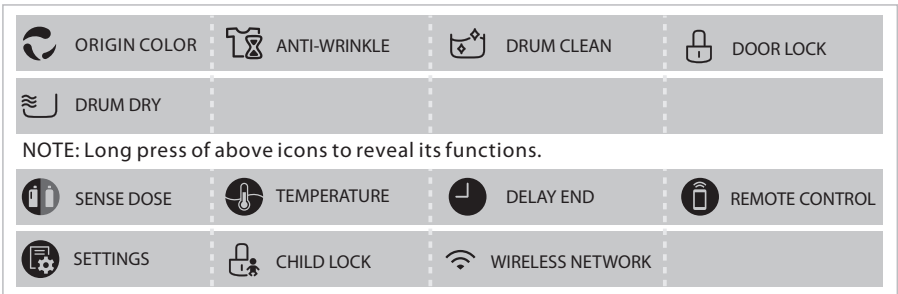
Turn on the appliance, and the display will show the following modes: "WASH", "WASH-DRY", "DRY", and "FABRICARE". Touch the screen to select one of these modes. Then, touch "CYCLE" to choose a program and set options.



### Note!

- The chart is for reference only, please refer to real product as standard.

- 1 Power**  
Product is switched on or off.
- 2 Cycle Type Selection**  
Four cycle types available, choose based on needs.
- 3 Program Selection Entry**  
Available according to the laundry type.
- 4 Option**  
This allows you to select an additional function.
- 5 Operation Status**  
The display shows the settings, estimated time remaining, options, and status messages for your washer. The display will remain on through the cycle.
- 6 START**  
Start the program.



# OPERATIONS

---

## ■ Option



### SETTINGS

Gently touch this key to enter, where you can set the machine's handle lights, system sounds, proximity wake-up, screen brightness, and more, as well as view the care label instructions, machine operation guide, perform drum cleaning, view the cleaning and maintenance methods of the machine components, handle abnormal conditions, and more.

---



### DELAY END

Set the Delay end function:

1. Select a program
2. Press the [●] to choose the time(the delaying end time is 1-24 H.)
3. Press [ START ] to commence the delay operation



On



Choose the Program



Setting time



Start

Cancel the Delay end function:

Press the [ PAUSE ] button and then press [ END ] button to cancel the delay end function.

### COMPLETE BY

This feature requires the machine to be connected to the internet and then set the current end time.



### Caution!

- If there is any break in the power supply while the machine is operating, a special memory stores the selected program and when the power is restarted, the selected program will continue running.



### ANTI-WRINKLE

After the function is activated, if you forget or delay to remove the clothes, the device will intelligently shake the clothes and ventilate the drum.

---



### TEMP.

Press the button to change water temperature.

Temp. : COLD, 20°C, 30°C, 40°C, 60 °C, 90°C



---





# OPERATIONS





## SENSE DOSE

The [  ] is the function of dispensing liquid detergent and softener automatically. The default setting is AI. You can press the [  ] button to turn off the detergent or softener automatic dispense function.

The " " or " " icon light up in display panel, means liquid detergent or softener automatic dispense is turned on.

None icons light up means the liquid detergent and softener automatic dispense is turned off.

When the " " or " " icon appears, it means lack of liquid detergent or softener, you need to add it.

Detergent and softener level: AI, LESS, NORMAL, MORE.

## DRY





### DRY

Press the DRY button to choose the dry level:

1. QUICK: Quick drying to shorten drying time.
2. STANDARD: Normal drying, suitable for everyday drying scenarios.
3. ULTRA-DRY: Complete drying, less moisture in garments.



## Note!

- Drying hints
  - Thoroughly spin you laundry before drying.
  - To ensure proper drying, please sort your laundry according to the fabric type and drying temperature.
- Check care labels of clothes and follow their instruction.
  -  Tumble dry is available.
  -  Tumble dry with Low temperature
  -  Tumble dry with Medium temperature
  -  Tumble dry is prohibited
- Clothes not suitable for drying
  - Particularly delicate items such as synthetic curtains, woolen and silk, clothes with metal inserts, nylon stockings, bulky clothes, such as anoraks, bedcovers, quilts, sleeping bags and duvets must not be dried.
  - Clothes padded with foam-rubber or materials similar to foam-rubber must not be machine dried.
  - Fabrics containing residues of setting lotions or hair sprays, nail solvents or similar solutions must not be machine dried in order to avoid the formation of harmful vapours.
- When drying a small amount of clothes about 1kg, it is not appropriate to use clothes that are not easy to dry, such as: sweaters, wool pants, small padded clothes and so on.

# OPERATIONS

## ■ Other Functions



### RELOAD

Clothes can be added after strating washing process.

Please follow the steps as bellow:

1. Press [RELOAD] button.
2. Wait until the drum stops rotation.
3. The door is unlocked.
4. Add clothes into drum.
5. Close the door and Press [CONTINUE] .



Press [RELOAD]

Reload the clothes

CONTINUE



### Caution!

- Don't use the Reload function when the water level is over the lower edge of the door or the water temperature is high.



### CHILD LOCK

To avoid mis operation by children.



Power On

Start

Press [ CHILD LOCK] .



### Caution!

The Child Lock deactivates the function of all buttons except the ON/OFF buttons and the Child lock button!

Only the pressing of the button [ PRESS 3 SECONDS TO UNLOCK ] can deactivate the Child Lock!

Please deactivate the Child Lock before selecting a new program!



### ORIGIN COLOR Function

The ORIGIN COLOR function means that the water is electrolyzed into -OH during washing process, which helps dissolve stains and floating colors. It is better to remove tough stains and whiten clothes.



### Remote Control

This is the switch of remote control, if you want to use your smartphone to control the machine remotely.

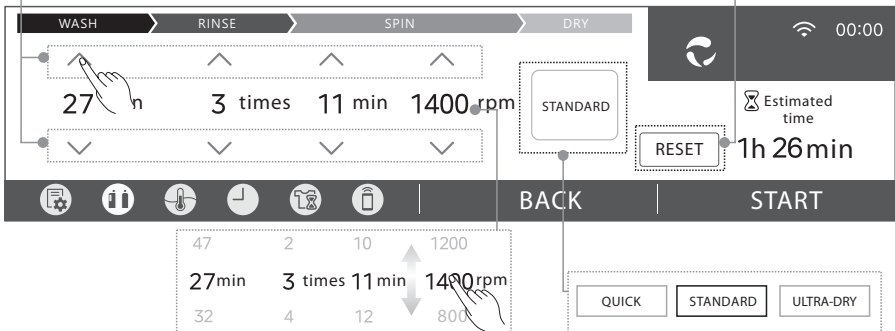
# OPERATIONS

## ■ Parameter Adjustment

### Operation example (WASH-DRY mode) ▼

Use “^/√” to adjust the relevant parameters, when there is no “^/√”, it indicates that the parameter is not adjustable.

Touch “RESET” to reset the program parameters to the default options.



Touch the number to enter, then slide directly to select the desired parameter.

Touch to select the drying level. In some programs, the drying level is displayed in light gray and does not respond to touch, indicating that it cannot be adjusted.

# OPERATIONS

---

## ■ Instructions to Connection with the TSmartLife App

Before you start, make sure that:

1. Your smartphone is connected to home Wireless Network, and you know the network password.
2. Make sure you are near the home appliance.
3. The 2.4GHz band wireless signal is enabled on your wireless router.

**Follow the below steps to enter the remote control state**

### **Download the TSmartLife App**

On an app market (Google Play Store, Apple App Store), search for "TSmartLife" and find the TSmartLife app. Download and install it on your phone. You can also download the app by scanning the QR code below.



### **Register and log in**

Open the TSmartLife app, and create a new account to start (you can also register through a third-party account). If you already had an existing account, use the account to log in.



### **Connect your devices to TSmartLife**

1. Please make sure your mobile phone is connected to Wireless Network. If not, go to Settings and turn on the wireless connection, select and connect to a Wireless Network. Also please turn on the Bluetooth on your phone. If not, go to Settings and turn it on.
2. Please power on your devices.
3. Open TSmartLife app on your phone.

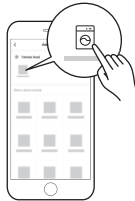
# OPERATIONS

---

4. If a message of "Smart devices discovered nearby" appears, click to add.



5. If no message appears, select "+" on the page and select your device in the list of nearby devices available. If your device is not listed, please add your device manually by the device category and device model.




6. Connect your device to Wireless Network according to the instructions on app. If the connection fails, please follow the instructions provided by the app to continue with the operation.



# OPERATIONS

## Wireless Network Status Light

	Slowly flashing	Waiting for connection
	Quickly flashing	Connecting
	Quickly flashing solid	Connected to your wireless router

### Note!

- Make sure your devices are powered on.
- Keep your mobile phone close enough to your device when you are connecting network to your device.
- Connect your mobile phone to the wireless network at home, and make sure you know the password of the Wireless Network.
- Check if your router supports 2.4 GHz Wireless Network band and turn it on. If you are not sure whether the router supports 2.4 GHz band, please contact the router manufacturer.
- The device cannot connect to the Wireless Network that requires authentication, and it usually appears in public area such as hotels, restaurants, etc. Please connect to a Wireless Network that does not require authentication.
- It is recommended to use a Wireless Network name that only contains letters and numbers. If your Wireless Network name contains special characters, please modify it in the router.
- Turn off the WLAN+ (Android) or WLAN Assistant (iOS) function of your mobile phone when connecting network to your devices.
- In the case that your device connected to Wireless Network before but it needs to reconnect, please click “+” on app Home page, and add your device again by the device category and model according to the instructions on app.

Technical parameter	Frequency range	Transmitted power
Targeted value	Wireless Network: 2.400~2.4835GHz BT5.1:2.400~2.4835GHz Centimeter Wave:5725~5875MHz	Wireless Network: < 20dBm BT5.1: < 10dBm Centimeter wave: < 0dBm

Extreme temperature range : -20~85°C

This equipment has been tested and found to comply with the limits for a EN 300 440 v2.2.1 receiver Category 3. These limits are designed to provide reasonable protection against harmful interference in a residential installation. When placed in the vicinity of other device(s) radiating in the 5725MHz-5875 MHz band this device will inadvertently trigger on, or will fail to switch off it's movement sensor ability being impaired. Please take appropriate measure to mitigate this eventuality.

# OPERATIONS

## ■ Programs

Programs are available according to the laundry type.

### Programs of WASH mode:

AI WASH	Suitable for washable and non-fading cotton, synthetics and other mixed clothes.
QUICK 15'/30'	QUICK 15': Suitable for a small load of newly purchased clothes with no obvious stains. QUICK 30': Suitable for small load and lightly stained clothes.
BEDDING (Light/Heavy)	Light: Suitable for lightweight bedding in spring and summer. Heavy: Suitable for heavy bedding in autumn and winter.
SANITIZE	High-temperature sanitization washing, with a sanitization rate of 99.99%.
WHITE	Deeply clean stains on white clothes and reduce yellowing.
COTTON	Suitable for cotton fabrics such as knitwear, T-shirts and bed sheets.
BABY CARE	Adjustable water temperature from room temperature to 90°C, suitable for baby clothes.
COLOR ALIVE	Efficiently cleans colorful clothes and reduces fading.
MIX	Suitable for mixed fabrics such as cotton, fiber, and other mixed clothes.
SPIN ONLY	Spin-only for wet clothes.
RINSE & SPIN	Rinse and spin in cold water.
STAINVANISH	Designed for special stains, such as sauce, fruit and makeup stains.
SILENCE WASH	SILENCE WASH turns off the button tone and reduces the sound of machine operation.
DOWN	Deep rinse to reduce detergent residue and protect down.
SHIRT	Suitable for cotton and blended fiber shirts, reducing wrinkles.
SPORTS WEAR	Suitable for sportswear such as jerseys, training pants, and other sports fabrics.
UNDERWEAR	Reduces detergent residue, suitable for underwear and small cotton/linen items.
TOWEL	Suitable for towel/bath towel washing.
ECO WASH	Suitable for white or colorfast cotton garments with medium soil level, while reducing energy consumption.
PRE WASH & NORMAL	The soaking process is added before washing, which is suitable for dirty clothes.
STERILIZATION	Continuous high-temperature sterilization.

The programs (DOWN/ SHIRT/ SPORTS WEAR/ UNDERWEAR/ TOWEL/ ECO WASH/ PRE WASH & NORMAL/ STERILIZATION/SILENCE WASH) can only be selected by TSmartLife App on mobile phones.

In the app, these cloud programs can be set to display two programs on the screen, with the default programs being DOWN/SHIRT.



The wool wash cycle of this machine has been tested and approved by The Woolmark Company for the washing of wool garments labelled as "hand wash" provided that the products are washed according to the instructions on the garment label and those issued by the manufacturer of this washing machine.  
M2414

# OPERATIONS

---

## Programs of WASH-DRY mode:

AI W & D	Suitable for washable and non-fading cotton, synthetics and other mixed clothes.
QUICK W & D	Quick wash & dry for a small amount of lightly soiled or close-fitting sports clothes of the day.
BEDDING (Light/Heavy)	Light: Suitable for lightweight bedding in spring and summer. Heavy: Suitable for thick bedding in autumn and winter.
SANITIZE	High-temperature sanitization washing and drying, with a sanitization rate of 99.99%.
WHITE	Deep stain removal for white clothes, reducing yellowing.
STAINVANISH	Designed for special stains, such as sauce, fruit and makeup stains.
BABY CARE	Adjustable water temperature from room temperature to 90°C, suitable for baby clothes.
MIX	Suitable for washing and drying cotton, synthetics, blended fabrics and other mixed clothes.
SILENCE W & D	SILENCE WASH & DRY turns off the keypad tone and reduces the sound during operation.
COTTON	Suitable for cotton fabrics, such as knitted clothes, T-shirts and bed sheets.
TOWEL	It is suitable for washing and drying towel/bath towel.
SPORTS WEAR	Suitable for sportswear, such as sweatshirts, training pants and other sports fabrics.
UNDERWEAR	Reduces detergent residue, suitable for underwear and small cotton/linen items.
DOWN	Deep rinsing reduces detergent residue. High wind speed drying enhances down fluffiness.
SHIRT	Suitable for cotton and blended fiber shirt to reduce wrinkles.

The programs (SPORTS WEAR/ UNDERWEAR/TOWEL/DOWN/ SHIRT) can only be selected by TSmartLife App on mobile phones.

In the app, these cloud programs can be set to display two programs on the screen, with the default programs being DOWN/SHIRT.



# OPERATIONS

## Programs of DRY mode:

AI DRY	Suitable for heat-resistant cotton, synthetics and other mixed clothes.
QUICK DRY	Double heat exchange for quick drying of everyday clothes within 3kg.
BEDDING (Light/Heavy)	Light: Suitable for lightweight bedding in spring and summer. Heavy: Suitable for heavy bedding in autumn and winter.
ANTIBACTERIAL	Deep sanitization for heat-resistant clothes.
BABY CARE	Suitable for heat-resistant cotton baby clothes; heavy clothes should be turned inside out.
MIX	Suitable for cotton, synthetics, blended fabrics and other mixed clothes.
TIME DRY	Customized drying time, is not suitable for wool, silk or other delicate clothes.
SILENCE DRY	SILENCE DRY turns off the keypad tone and reduces the sound during operation.
COTTON	Suitable for cotton fabrics, such as knitted clothes, T-shirts and bed sheets.
TOWEL	Suitable for towels/bath towels.
SHIRT	Suitable for cotton and blended fiber shirt to reduce wrinkles.
SPORTS WEAR	Suitable for sportswear such as jerseys, training pants, and other sports fabrics.
UNDERWEAR	Suitable for underwear and small cotton/linen items.
DOWN	Down jackets drying cycle, and it is recommended to dry them individually.

The programs (DOWN / SHIRT/ SPORTS WEAR/ UNDERWEAR/TOWEL ) can only be selected by TSmartLife App on mobile phones.

In the app, these cloud programs can be set to display two programs on the screen, with the default programs being DOWN/TOWEL.



The wool drying cycle of this machine has been tested and approved by The Woolmark Company. The cycle is suitable to dry wool garments which are labelled "hand wash" provided that the garments are washed in a Woolmark endorsed hand washing cycle and dried according to the instructions issued by the manufacturer of this machine.  
M2447

# OPERATIONS

---

## Programs of FABRICARE mode:

WOOL	Wool is mainly composed of scaled fibers, prone to shrinkage and felting and need to reduce friction.
CASHMERE	Cashmere is mainly composed of wool fibers, easily damaged; reduce pulling and friction.
LINEN	Linen is mostly cellulose fiber, with low elasticity and easy to wrinkle.
SILK	Silk, primarily composed of protein, is sensitive to high temperatures and requires minimized exposure to heat and frequent washing.
YOGA	Yoga clothing is mainly made of blended high-elastic fiber, which needs to avoid strong pulling and high temperature.
OUTDOOR	Outdoor jackets often have a microporous filter membrane coating, please avoid high-temperature washing and drying.
REFRESH	Fresh air for deodorization, suitable for dust removal, removing mites and fluffy care.
WARM	Quickly warms clothes, providing comfort in autumn and winter.
PET CARE	The sanitization and mite removal of pet clothes or supplies.

# OPERATIONS

## ■ Washing Programs Table

**Programs of WASH mode:**

Program	Load(kg)	Temp.(°C)	Default Time(h:min)
	12.0	Default	
AI WASH	12.0	30	--
QUICK 15'/30'	2.0/3.0	COLD/30	0:15/0:30
BEDDING(Light/Heavy)	12.0	30/40	0:58/1:48
SANITIZE	6.0	60	2:30
WHITE	6.0	30	1:09
DOWN	2.0	40	1:27
BABY CARE	10.0	60	2:05
COLOR ALIVE	6.0	COLD	1:03
MIX	12.0	40	1:10
SPIN ONLY	12.0	--	0:12
RINSE & SPIN	12.0	--	0:20
COTTON	12.0	40	1:18
SHIRT	6.0	30	0:55
SPORTS WEAR	6.0	20	0:47
UNDERWEAR	6.0	30	1:35
TOWEL	10.0	40	1:12
SILENCE WASH	6.0	30	0:50
STAINVANISH	3.0	40	1:11
ECO WASH	6.0	30	0:57
PRE WASH & NORMAL	12.0	COLD	1:32
STERILIZATION	6.0	70	2:27

The programs (DOWN/ SHIRT/ SPORTS WEAR/ UNDERWEAR/ TOWEL/ ECO WASH/ PRE WASH & NORMAL/ STERILIZATION/SILENCE WASH) can only be selected by TSmartLife App on mobile phones. In the app, these cloud programs can be set to display two programs on the screen, with the default programs being DOWN/SHIRT.

### **Note!**

- The parameters in this table are only for user's reference. The actual parameters maybe different with the parameters in above mentioned table.

# OPERATIONS

## Programs of WASH-DRY mode:

Program	Load(kg)	Temp.(°C)	Default Time(h:min)
	7.0	Default	
AI W & D	7.0	30	--
QUICK W & D	1.0	COLD	0:59
BEDDING(Light/Heavy)	7.0	30/40	3:52/5:32
SANITIZE	4.0	60	5:36
WHITE	3.0	30	2:59
DOWN	1.5	40	4:23
BABY CARE	1.0	60	3:03
MIX	3.0	40	3:10
SLIENCE W & D	5.0	30	4:21
COTTON	7.0	40	3:18
SHIRT	3.0	30	2:19
SPORTS WEAR	3.0	20	2:21
UNDERWEAR	3.0	30	3:09
TOWEL	5.0	30	2:34
STAINVANISH	3.0	40	3:11

The programs (SPORTS WEAR/ UNDERWEAR/TOWEL/DOWN/ SHIRT) can only be selected by TSmartLife App on mobile phones.

In the app, these cloud programs can be set to display two programs on the screen, with the default programs being DOWN/SHIRT.



### Note!

- The parameters in this table are only for user's reference. The actual parameters maybe different with the parameters in above mentioned table.

# OPERATIONS

## Programs of DRY mode:

Program	Load(kg)	Default Time(h:min)
	7.0	
AI DRY	7.0	--
QUICK DRY	3.0	1:15
BEDDING(Light/Heavy)	7.0	2:54/3:44
ANTIBACTERIAL	4.0	3:16
DOWN	1.5	2:55
BABY CARE	1.0	0:58
MIX	7.0	2:00
TIME DRY	--	0:30
SILENCE DRY	4.0	3:31
COTTON	7.0	2:00
TOWEL	5.0	1:44
SHIRT	3.0	1:24
SPORTS WEAR	3.0	1:34
UNDERWEAR	3.0	1:34

The programs (DOWN / SHIRT/ SPORTS WEAR/ UNDERWEAR/TOWEL ) can only be selected by TSmartLife App on mobile phones.

In the app, these cloud programs can be set to display two programs on the screen, with the default programs being DOWN/TOWEL.



## Note!

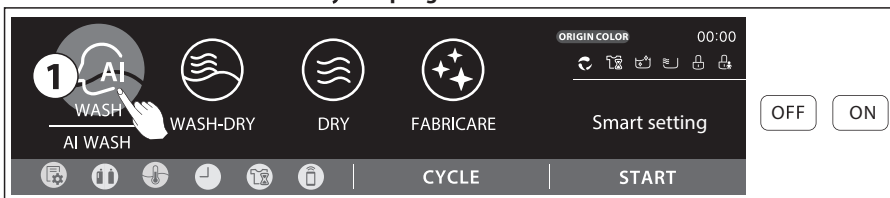
- The parameters in this table are only for user's reference. The actual parameters maybe different with the parameters in above mentioned table.

# OPERATIONS

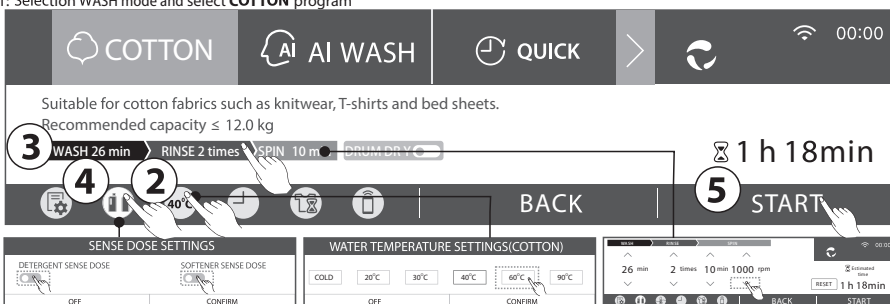
## Programs of FABRICARE mode:

Program	Load(kg)	Temp.(°C)	Default Time(h:min)
	WASH/DRY/WASH&DRY/CARE	WASH/DRY/WASH&DRY/CARE	WASH/DRY/WASH&DRY/CARE
		Default	
WOOL	2.0/1.0/1.0/1.0	COLD/--/COLD/--	1:03/2:30/3:33/0:22
CASHMERE	2.0/1.0/1.0/1.0	COLD/--/COLD/--	0:50/2:30/3:20/0:19
LINEN	2.0/1.0/1.0/1.0	20/--/20/--	0:54/1:13/2:07/0:25
SILK	2.0/1.0/1.0/0.6	30/--/30/--	0:50/1:08/1:59/0:17
YOGA	2.0/1.5/1.5/1.0	30/--/30/--	0:41/1:16/1:57/0:25
OUTDOOR	6.0/2.0/2.0/0.5	30/--/30/--	1:15/1:44/2:59/0:40
REFRESH	--/--/--/1.5	--/--/--/--	--/--/--/0:40
WARM	--/--/--/1.0	--/--/--/--	--/--/--/0:15
PET CARE	--/--/--/1.5	--/--/--/--	--/--/--/0:50

**Recommend program for SG:** COTTON+Wash temp 60°C+Speed 1400rpm+SENSE DOSE:OFF  
**How to select the Water Efficiency test program for SG**



1: Selection WASH mode and select **COTTON** program



2: Touch icon of "TEMPERATURE" to **60 °C**

4: Touch icon of "SENSE DOSE" and **OFF** detergent/softener sense dose

3: Touch parameter and adjust speed to **1400**  
 5: Press **START**

## Note!

- The parameters in this table are only for user's reference. The actual parameters maybe different with the parameters in above mentioned table.
- If you select the SG Water Efficiency test program, after the program finishes, the washing machine will enter low-power mode and cannot be turned on by pressing the power button. You need to knock on the screen three times to turn on the washing machine.

# MAINTENANCES

## ■ Cleaning and Care

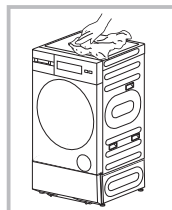


### **Warning!**

- Before your maintenance starts, please unplug the machine and close the tap.

## Cleaning the Cabinet

Proper maintenance on the washing machine can extend its working life. The surface can be cleaned with diluted non-abrasive neutral detergents when necessary. If there is any water overflow, use the dry cloth to wipe it off immediately. No sharp items are allowed.



### **Note!**

- Formic acid and its diluted solvents or equivalent are forbidden, such as alcohol, solvents or chemical products, etc.

## Cleaning the Drum

The rusts left inside the drum by the metal articles shall be removed immediately with chlorine-free detergents.

Never use steel wool.



### **Note!**

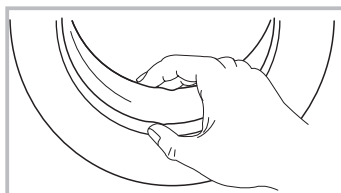
- Don't put laundry in the washer dryer during the drum cleaning.

## Cleaning the Gasket and Glass

Wipe the glass and gasket after each wash to remove lint and stains. If lint builds up it can cause leaks.

Remove any coins, buttons and other objects from the gasket after each wash.

Clean the Door Seal and Glass every month to ensure the normal operation of the appliance.



# MAINTENANCES

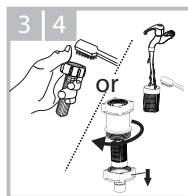
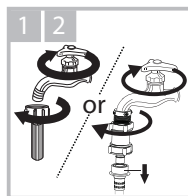
## Cleaning the Inlet Filter

### Note!

- Inlet filter must be cleaned if water reduces than before.
- Clean the Inlet filter every 3 months to ensure the normal operation of the appliance.

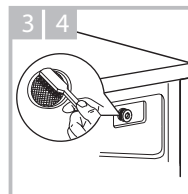
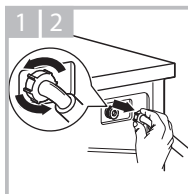
Washing the filter in the water inlet hose

1. Close the tap.
2. Remove water inlet hose or water filter from the tap.
3. Disassembly and clean the filter.
4. Reconnect the water inlet hose.



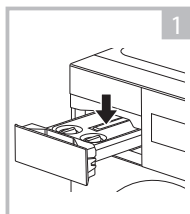
Washing the filter in washing machine:

1. Screw off the water inlet hose from the backside of the machine.
2. Pull out the filter with long nose pliers and reinstall it back after being washed.
3. Use the brush to clean the filter.
4. Reconnect the water inlet hose.

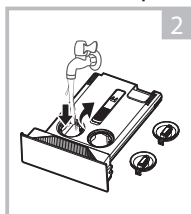


## Clean the Detergent Dispenser

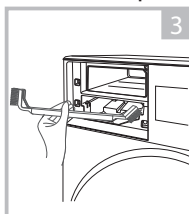
1. Press down the arrow location on softener cover inside the dispenser drawer.
2. Lift the clip up and take out softener cover and wash all grooves with water.
3. Clean the recess with an soft brush.
4. Restore the softener cover and push the drawer into position.



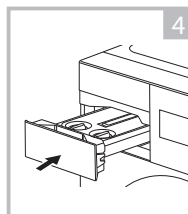
Press the release and remove the dispenser drawer



Clean the dispenser drawer and the softener cover under water



Clean the recess with an soft brush



Insert the dispenser drawer

### Note!

- Do not use alcohol, solvents or chemical products to clean the machine.
- Clean the detergent dispenser every 3 months to ensure the normal operation of the appliance.

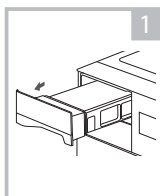


# MAINTENANCES

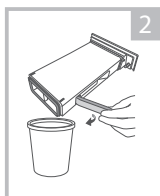
## Cleaning the Lint Filter

### **Note!**

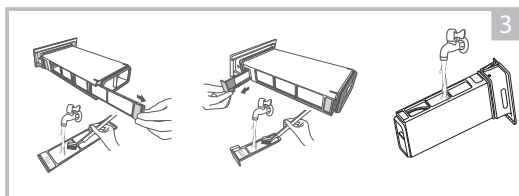
- After each use of the drying/care function, clean the filter.
- Before reinstalling the filter assembly, ensure the filter is fully dry, and pay attention to the installation direction.
- Do not use the drying or care function when the lint filter box is missing.
- Do not open the lint filter box during the drying process to avoid temperature differences causing the machine to misjudge the dryness.



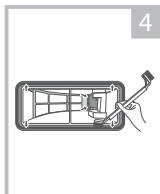
Pull out the lint collection box and remove it.



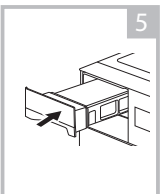
Open the lever to clean the filter, and directly dispose of the lint in the trash bin.



Remove the filter, clean the lint off the filter, use a soft-bristled brush to clean or rinse with water.



Lint may remain in the seal of the lint collection box, the base of the silicone cleaning brush, and the interior; use a brush to clean regularly.



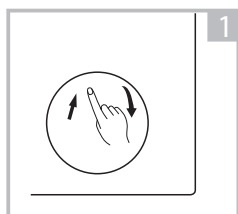
Insert the collection box

# MAINTENANCES

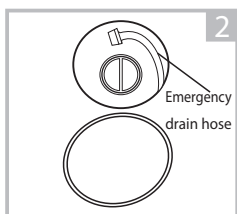
## Cleaning the Drain Pump Filter

### ⚠ Warning!

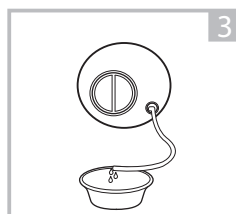
- Be careful of the hot water!
- Wait until the water cools down.
- Unplug the machine to avoid electrical shock before maintenance.
- Drain pump filter can filter the lints and small foreign matters from the washing.
- Clean the filter periodically every 3 months to ensure the normal operation of machine.



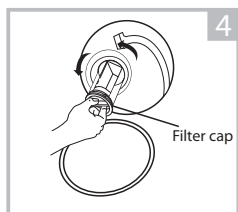
Open the lower cover cap



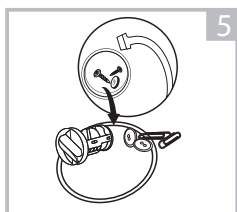
Pull out the emergency drain hose, and take off the hose cap



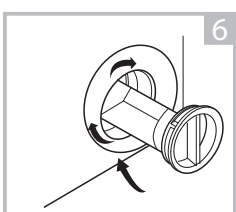
After water runs out, reset the drain hose



Open the filter cap by turning to the counter clockwise



Remove extraneous matter



Close the filter cap and the lower cover cap

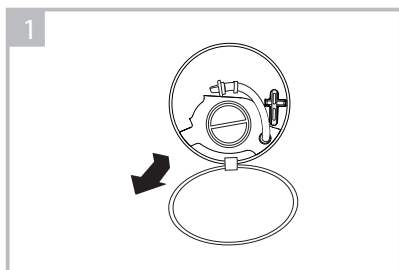
### ⚠ Caution!

- Make sure that filter cap and emergency drain hose are reinstalled properly, filter cap should be inserted aligning to hole plates otherwise water may leak.
- When the appliance is in use and depending on the program selected there can be hot water in the pump. Never remove the pump cover during a wash cycle, always wait until the appliance has finished the cycle, and is empty. When replacing the filter cap, ensure it is securely re-tightened.

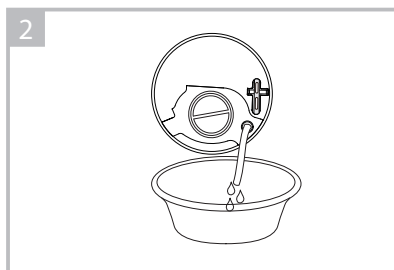
# MAINTENANCES

## Emergency Door Release

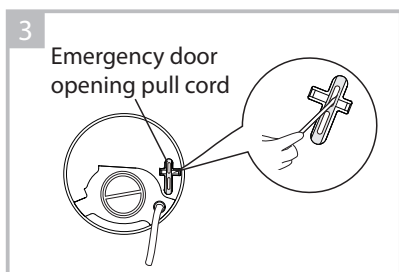
In case of power failure or other circumstances and door cannot be opened. If it is necessary to open the door under this circumstances, please pull down the pull cord inside emergency door and restore the pull cord after opening the door.



1. Open filter door.



2. In case of power failure, open the filter door to drain the cooled water in the drum.



3. Insert the tool into the pull ring and pull it downward to unlock the door of the machine



### Warning!

The machine is not allowed to use the emergency switch pull cord during washing. If need to run machine urgently, it is recommended to open door after water is cooled, to avoid getting burn caused by high temperature residual water outflow from the machine tub.

# MAINTENANCES

## ■ Trouble Shooting

The start of the appliance does not work or it stops during operation.  
First try to find a solution to the problem, if not, contact the service centre.

Description	Reason	Solution
Washing machine can not start up	Door is not closed properly	Restart after the door is closed Check if the clothes is stuck
Door can't be opened	Safety protection design is working	Disconnect the power, restart the product
Water leakage	Connection of water inlet hose or drain hose is not proper.	Check connection of water inlet hose and drain hose.
Detergent residues in the box	Detergent is dampened or agglomerated	Clean and wipe the detergent box
Indicator or display does not light	Electrical power cord may not be plugged in or connection may be loose.	Make sure plug fits tightly in wall outlet. Check the power plug is connected correctly.
Abnormal noise		Check if the fixing (bolts) have been removed Check it's installed on a solid and level floor

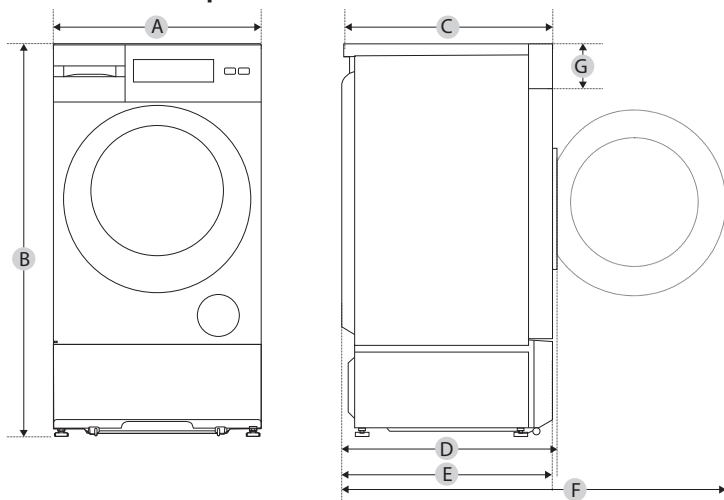
Description	Reason	Solution
E30	Door is not closed properly	Restart after the door is closed Check if the clothes is stuck
E10	Water supply duration is too long	Check if the water pressure is too low Straighten the water inlet hose Check if the inlet valve filter is blocked
E21	Water drain duration is too long	Check if the drain hose is blocked
E12	Water overflow	Stop using the washing machine and call the service centre for repair
EXX	Others	Try operation again. If the same trouble continues, call for service.

### Note!

- After the check, activate the appliance. If the problem occurs or the display shows other alarm codes again, contact the service.

# MAINTENANCES

## ■ Technical Specifications



Model	TWD-T39BZP130MWS(WW)
Power Supply	220-240V~, 50Hz
MAX. Current	10A
Standard Water Pressure	0.05MPa~1MPa
Washing / Drying Capacity	12.0/7.0kg
Dimension	
A	595 mm
B	1125 mm
C	585 mm
Weight	107 kg
Rated Power/Dry Power	1670 /950 W
Reference Dimension	
D	614 mm
E	594mm
F	1104 mm
G	165mm