


设计 DESIGN	荣迦南 25.06.24	图纸名称 PART NAME  TOSHIBA 新加坡 GR-RF691WI-PGX(67)(BCD560) 说明书				图号/物料编码 PART NO.  16131000A54749	
校对 CO. BY	xxx					材料 MATERIAL  105g铜版纸	
标准化 STANDARD							
业务 seller	沈菁菁	图样标记 REL	版本号 REV. NO.	重量(g) WEIGHT	比例 scale	<div> Midea 冰箱事业部 MIDEA REFRIGERATION DIVISION</div>	
批准 AUTHORI ZE			3		1: 1		
		共 页 TOTAL SHEETS		第 页 NO. OF SHEETS			

技术要求						
1. 尺寸:210*145 2. 印刷颜色:封面封底彩色，内页单色 3. 制件必须符合 QMB-J036.1008 产品说明书及其它类似印刷件技术规范; 4. 除客户特别要求外均参照美的冰箱最新版相关企业标准执行;						
目录不能在封面背面						

标记 MARKER	变更内容	修改日期	签名
1			
2			
3			
4			

# USER MANUAL

## REFRIGERATOR FREEZER

For Home Use Only

GR-RF691WI-PGX(67)

**TOSHIBA**





## CONTENTS

---

<b>1. Safety warnings .....</b>	<b>1</b>
<b>2. Proper use of the refrigerator.....</b>	<b>8</b>
<b>3. Structure and functions .....</b>	<b>14</b>
<b>4. Maintenance and care of the refrigerator .....</b>	<b>22</b>
<b>5. Trouble shooting .....</b>	<b>25</b>
<b>6. Disposal of your appliance .....</b>	<b>26</b>

- **Thank you very much for purchasing this Toshiba product.**
- **Read this user manual and become completely familiar with the product before use to operate it safely and correctly.**
- **Keep this user manual in a handy place for future reference.**
- **Make sure that you received your warranty.**



## 1. Safety warnings

---

### READ SAFETY PRECAUTIONS BEFORE INSTALLATION

To prevent injury to the user or other people and property damage, the following instructions must be followed. Incorrect operation due to ignoring of instructions may cause harm or damage.

#### 1.1 Warning

##### **WARNING**



Warning: risk of fire / flammable materials

- **WARNING: Risk of fire/disaster and explosion**  
The refrigerant of the appliance is flammable, please be care not to damage the cooling pipes during installation and transportation.  
If gas leakage happens, please contact the distributor or local service agent, and the following precautions should be always taken:
  1. Open the windows for ensuring good ventilation.
  2. No fire around and please do not use other electric appliance.
- This appliance is intended to be used in household and similar applications such as staff kitchen areas in shops, offices and other working environments; farm houses and by clients in hotels, motels and other residential type environments; bed and breakfast type environments; catering and similar non-retail applications.
- Children should be supervised to ensure that they do not play with the appliance.
- **WARNING: Risk of fire disaster and electric shock**  
The power cord should be replaced when it has been damaged; please contact the distributor or local service agent for replacement.
- Please unplug the power plug from socket when clean the appliance or leave the appliance nonuse for a long time.
- Do not use extension cord or ungrounded (two prong) adapters.
- **WARNING: Keep ventilation openings, in the appliance enclosure or in the built-in structure, clear of obstruction.**
- **WARNING: Do not use mechanical devices or other means to accelerate the defrosting process, other than those recommended by the manufacturer.**
- **WARNING: Do not damage the refrigerant circuit.**
- **WARNING: Do not use electrical appliances inside the food storage compartments of the appliance, unless they are of the type recommended by the manufacturer.**

- 
- WARNING: Do not damage or let the back of the refrigerator squeeze the power plug and cable. Damage to the power plug or cable when strapping, bending, placing heavy objects on it, or being squeezed by the back of the refrigerator may result in fire or electric shock.
  - WARNING: Please abandon the refrigerator according to local regulators for it use flammable blowing gas and refrigerant.
  - WARNING: When positioning the appliance, ensure the supply cord is not trapped or damaged.
  - WARNING: Do not locate multiple portable socket-outlets or portable power supplies at the rear of the appliance.
  - WARNING: Please fill with potable water only. Please do not fill hot water or liquids other than potable water such as juices.
  - DANGER: Risk of child entrapment. Before you throw away your old refrigerator or freezer:
    - Take of the doors.
    - Leave the shelves in place so that children may not easily climb inside.
  - The refrigerator must be disconnected from the source of electrical supply before attempting the installation of accessory.
  - Refrigerant and cyclopentane foaming material used for the refrigerator are flammable. Therefore, when the refrigerator is scraped, it shall be kept away from any fire source and be recovered by a special recovering company with corresponding qualification other than be disposed by combustion, so as to prevent damage to the environment or any other harm.
  - For IEC standard: This appliance is not intended for use by persons(including children) with reduced physical, sensory or mental capabilities, or lack of experience and knowledge, unless they have been given supervision or instruction concerning use of the appliance by a person responsible for their safety.
  - For EU standard: This appliance can be used by children aged from 8 years and above and persons with reduce physical sensory or mental capabilities or lack of experience and knowledge if they have been given supervision or instruction concerning use of the appliance in a safe way and understand the hazards involved. Children shall not play with the appliance. Cleaning and user maintenance shall not be made by children without supervision.
  - Please do not use the appliance on traffic means(such as ship and so on).
  - If noise, odor and smoking happens, please unplug the power plug immediately, and contact the distributor or local service agent.
  - Please do not put your hands under or behind the appliance to prevent from being hurt.
  - Please leave the packing materials and other parts out of the reach of children to prevent from risk of suffocation.

- 
- To avoid contamination of food, please respect the following instructions:
    - Opening the door for long periods can cause a significant increase of the temperature in the compartments of the appliance.
    - Clean regularly surfaces that can come in contact with food and accessible drainage systems.
    - Clean water tanks if they have not been used for 48 h; flush the water system connected to a water supply if water has not been drawn for 5 days. ( note 1 )
    - Store raw meat and fish in suitable containers in the refrigerator, so that it is not in contact with or drip onto other food.
    - Two-star frozen-food compartments are suitable for storing pre-frozen food, storing or making ice-cream and making ice cubes. ( note 2 )
    - One-, two- and three star compartments are not suitable for the freezing of fresh food. (note 3)
    - For appliances without a 4-star compartment: this refrigerating appliance is not suitable for freezing foodstuffs. (note 4)
    - If the refrigerating appliance is left empty for long periods, switch off, defrost, clean, dry, and leave the door open to prevent mould developing within the appliance.
  - Note 1,2,3,4 : Please confirm whether it is applicable according to your product compartment type.
  - Any replacement or maintenance of the LED lamps is intended to be made by the manufacturer, its service agent or similar qualified person.
  - This product contains a light source of energy efficiency class (F).

---

## 1.2 Meaning of safety warning symbols



**Prohibition symbol**

### **This is a prohibition symbol.**

Any in compliance with instructions marked with this symbol may result in damage to the product or endanger the personal safety of the user.



**Mandatory symbol**

---

### **This is a mandatory symbol.**

It is required to operate in strict observance of instructions marked with this symbol; or otherwise damage to the product or personal injury may be caused.



**Cautioning symbol**

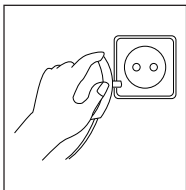
---

### **This is a cautioning symbol.**

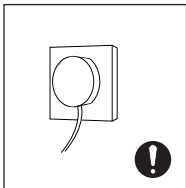
Instructions marked with this symbol require special caution. Insufficient caution may result in slight or moderate injury, or damage to the product.

**This manual contains lots of important safety information which shall be observed by the users.**

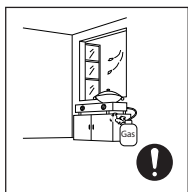
## 1.3 Electricity related warnings



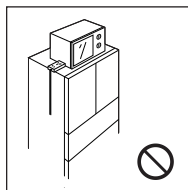
- Do not pull the power cord when pulling the power plug of the refrigerator. Please firmly grasp the plug and pull out it from the socket directly.
- To ensure safe use, do not damage the power cord or use the power cord when it is damaged or worn.



- Please do not touch the power plug with wet hand to prevent from electric shock.
- Please use a dedicated power socket and the power socket shall not be shared with other electrical appliances. The power plug should be firmly contacted with the socket or else fires might be caused.

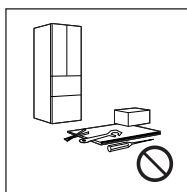


- Please ensure that the grounding electrode of the power socket is equipped with a reliable grounding line.
- Please ask for help from persons with professional qualification to examine whether the socket is with reliable grounding line or not.
- It is the end-consumers' responsibility to change the ungrounded socket into grounded socket.
- Please turn off the valve of the leaking gas and then open the doors and windows in case of leakage of gas and other flammable gases. Do not unplug the refrigerator and other electrical appliances considering that spark may cause a fire.

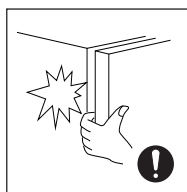


- Do not use electrical appliances on the top of the appliance, unless they are of the type recommended by the manufacturer.

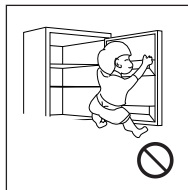
## 1.4 Warnings for using



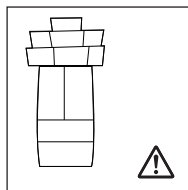
- Do not arbitrarily disassemble or reconstruct the refrigerator, nor damage the refrigerant circuit; maintenance of the appliance must be conducted by a specialist.
- Damaged power cord must be replaced by the manufacturer, its maintenance department or related professionals in order to avoid danger.



- The gaps between refrigerator doors and between doors and refrigerator body are small, be noted not to put your hand in these areas to prevent from squeezing the finger. Please be gentle when close the refrigerator door to avoid falling articles.
- Do not pick foods or containers with wet hands in the freezing chamber when the refrigerator is running, especially metal containers in order to avoid frostbite.

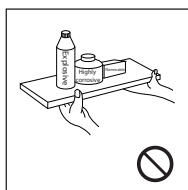


- Do not allow any child to get into or climb the refrigerator; otherwise suffocation or falling injury of the child may be caused.

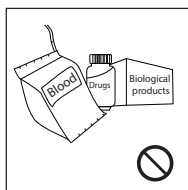


- Please do not put heavy or dangerous objects on top of the appliance (bottles, tableware, or something containing liquid).
- Please pull out the power plug when the electricity fails or clean the appliance, and connecting it to power supply after at least 5 minutes, which prevents damage to the compressor by continuous startup.

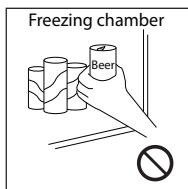
## 1.5 Warnings for placement



- Do not put flammable, explosive, volatile and highly corrosive items in the refrigerator to prevent damages to the product or fire accidents.



- Do not place flammable items near the refrigerator to avoid fires.
- The refrigerator is intended for household use, such as storage of foods; it shall not be used for other purposes, such as storage of blood, drugs or biological products, etc.



- Do not store beer, beverage or other fluid contained in bottles or enclosed containers in the freezing chamber of the refrigerator ; or otherwise the bottles or enclosed containers may crack due to freezing to cause damages.

⚠ Please do not allow the amount of food stored in the container or storage box to exceed the upper storage limit shown in the right figure. Otherwise, the refrigerator door will not be able to close completely, resulting in poor cooling effect, frosting or damage.

Tips

- Food exceeding the upper storage limit will result in the door not being able to be fully closed. (Create gap)

Gap state

---

## 1.6 Warnings for energy

- Refrigerating appliances might not operate consistently (possibility of defrosting of contents or temperature becoming too warm in the frozen food compartment) when sited for an extended period of time below the cold end of the range of temperatures for which the refrigerating appliance is designed.
- The fact that effervescent drinks should not be stored in food freezer compartments or cabinets or in low-temperature compartments or cabinets, and that some products such as water ices should not be consumed too cold.
- The need to not exceed the storage time(s) recommended by the food manufacturers for any kind of food and particularly for commercially quick-frozen food in food-freezer and frozen-food storage compartments or cabinets.
- The precautions necessary to prevent an undue rise in the temperature of the frozen food while defrosting the refrigerating appliance, such as wrapping the frozen food in several layers of newspaper.
- The fact that a rise in temperature of the frozen food during manual defrosting, maintenance or cleaning could shorten the storage life.
- The necessity that, for doors or lids fitted with locks and keys, the keys be kept out of the reach of children and not in the vicinity of the refrigerating appliance, in order to prevent children from being locked inside.

## 1.7 Warnings for disposal



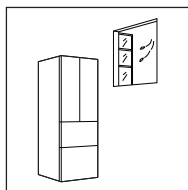
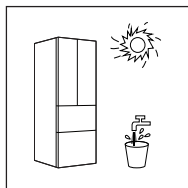
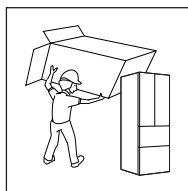
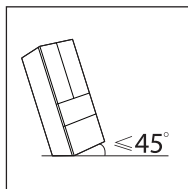
- Refrigerant and cyclopentane foaming material used for the refrigerator are flammable. Therefore, when the refrigerator is scrapped, it shall be kept away from any fire source and be recovered by a special recovering company with corresponding qualification other than be disposed by combustion, so as to prevent damage to the environment or any other harm.



- When the refrigerator is scrapped, disassemble the doors, and remove gasket of door and shelves; put the doors and shelves in a proper place, so as to prevent trapping of any child.

## 2 Proper use of the refrigerator

### 2.1 Placement



- Before the refrigerator is moved, take all objects inside out, fix the glass partitions, vegetable holder, freezing chamber drawers and etc. with tape, and tighten the leveling feet; close the doors and seal them with tape. During moving, the appliance shall not be laid upside down or horizontally, or be vibrated; the inclination during movement shall be no more than 45°.
- Before use, remove all packing materials, including button cushions, foam pads and tapes inside of the refrigerator; tear off the protective film on the doors and the refrigerator body. Keep away from heat and avoid direct sunlight. Do not place the freezer in moist or watery places to prevent rust or reduction of insulating effect.
- Do not spray or wash the refrigerator; do not put the refrigerator in moist places easy to be splashed with water so as not to affect the electrical insulation properties of the refrigerator.
- The refrigerator is placed in a well-ventilated indoor place; the ground shall be flat, and sturdy (rotate left or right to adjust the wheel for leveling if unstable).

#### Precautions before installation:



**Before installation or adjusting of accessories, it shall be ensured that the refrigerator is disconnected from power. Precautions shall be taken to prevent fall of the handle from causing any personal injury.**



# Slot-in

In order to ensure the proper functioning of the refrigerator when used in an embedded manner, a gap should be left between the refrigerator and the interior of the embedded cabinet (primarily considering cabinet deformation and ease of installation). When the door opening angle is 90°, the minimum dimensions of the interior of the embedded cabinet should meet the following requirements:

	Overall dimensions of refrigerator (mm)	Recommended minimum dimensions of the interior of the embedded cabinet (mm)
Width	833	837
Depth	600	600
Height	1910	1918

It is recommended to install the socket at a height greater than 2000 mm above the rear of the refrigerator. The diameter of the cable hole on the cabinet board shall be greater than 60 mm, and the cable hole shall be reserved below the socket (see Figure I) (pay attention to preventing damage to the power cable. It is recommended that customers use invisible sockets).

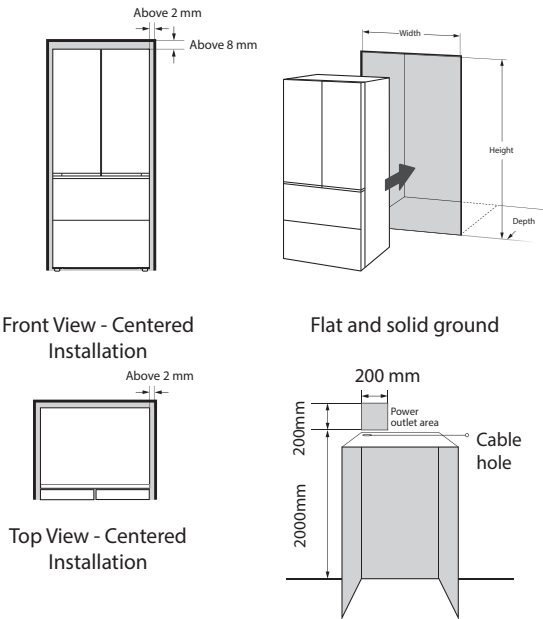


Figure I

• If you want the maximum door opening of 125°, a 40 mm gap is required between both sides of the refrigerator and the embedded cabinet.

---

## 2.2 Leveling feet

### 1. Precautions before operation:

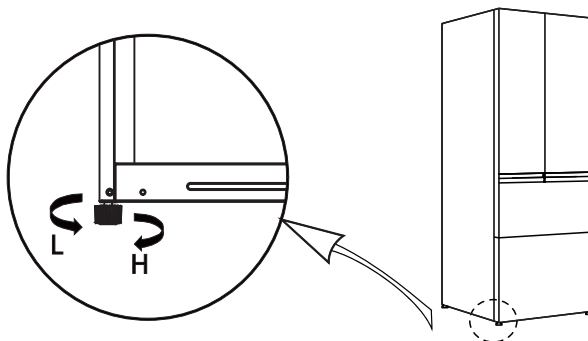
Before operating the accessories, ensure that the refrigerator is disconnected from the power source.

### 2. Schematic diagram of the levelling feet:

Before adjusting the leveling feet, precautions shall be taken to prevent any personal injury.

### 3. Adjusting procedures:

- Turn the feet clockwise to raise the refrigerator;
- Turn the feet counterclockwise to lower the refrigerator;
- Adjust the right and left feet based on the procedures above to a horizontal level.

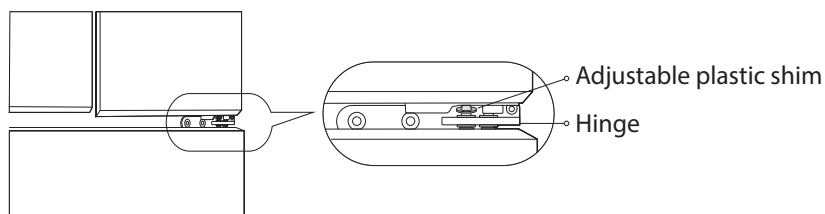


(The picture above is only for reference. The actual configuration will depend on the physical product or statement by the distributor)

---

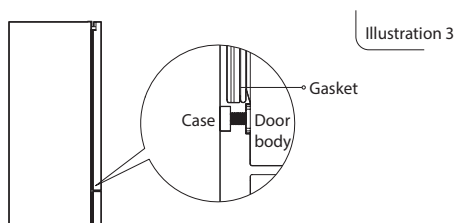
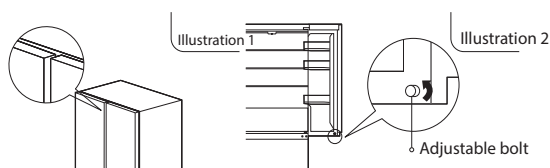
## 2.3 Side by Side Leveling

Lift the lower door body. Use your hand or a tool, e.g. a pincer, to place the adjustable shim between the door and the hinge.



## 2.4 Door Front Alignment

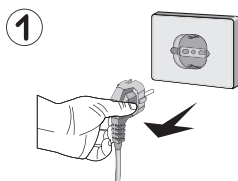
When the left and right doors have uneven surfaces (as shown in Illustration 1), open the lower door body, turn the adjusting bolt counterclockwise (as shown in Illustration 2) until the left and right door bodies are even. When the adjustment is done, please observe carefully. Make sure the gasket between the doors and the case of the fridge seals effectively (as shown in Illustration 3). No crack is allowed, or the function of the fridge will be affected.



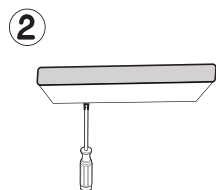
---

## 2.5 Changing the Light

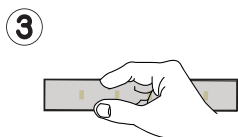
Any replacement or maintenance of the LED lamps is intended to be made by the manufacturer, its service agent or similar qualified person.



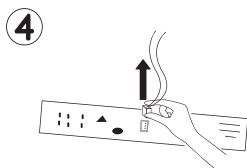
1. Please unplug the unit from the power source before performing the replacement.



2. Remove the lampshade with a screwdriver.



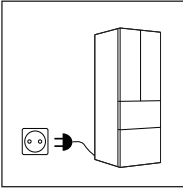
3. Take down the lamp panel.



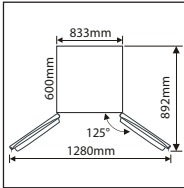
4. Remove the connection terminal.

---

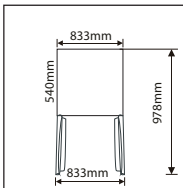
## 2.6 Starting



- Before initial start, keep the refrigerator still for half an hour before connecting it to power supply.



- Before putting any fresh or frozen foods, the refrigerator shall have run for 2-3 hours, or for above 4 hours in summer when the ambient temperature is high.



- Spare enough space for convenient opening of the doors and drawers or statement by the distributor.

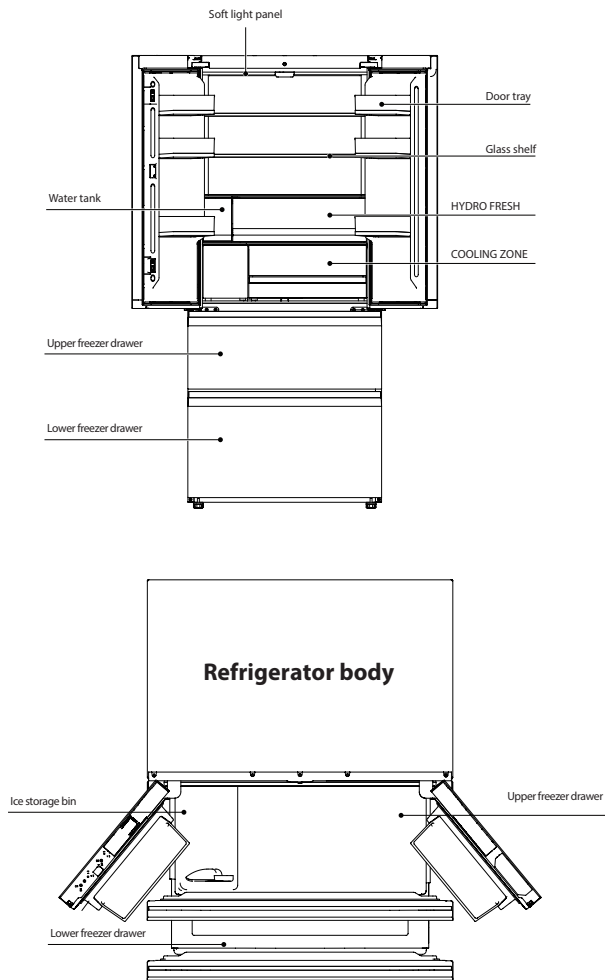
## 2.7 Energy saving tips

- The appliance should be located in the coolest area of the room, away from heat producing appliances or heating ducts, and out of the direct sunlight.
- Let hot foods cool to room temperature before placing in the appliance. Overloading the appliance forces the compressor to run longer. Foods that freeze too slowly may lose quality, or spoil.
- Be sure to wrap foods properly, and wipe containers dry before placing them in the appliance. This cuts down on frost build-up inside the appliance.
- Appliance storage bin should not be lined with aluminum foil, wax paper, or paper toweling. Liners interfere with cold air circulation, making the appliance less efficient.
- Organize and label food to reduce door openings and extended searches. Remove as many items as needed at one time, and close the door as soon as possible.

### 3. Structure and functions

---

#### 3.1 Key components



The above pictures are for reference only. The actual configuration is subject to the purchased item or the declaration from the dealer.

---

### Refrigerating chamber

- The Refrigerating chamber is suitable for storage of a variety of fruits, vegetables, beverages and other food consumed in the short term, suggested storage time 3 days to 5 days.
- Cooking foods shall not be put in the refrigerating chamber until cooled to room temperature.
- Foods are recommended to be sealed up before putting into the refrigerator.
- The glass shelves can be adjusted up or down for a reasonable amount of storage space and easy use.

### Freezing chamber

- The low temperature freezing chamber may keep food fresh for a long time and it is mainly used to store frozen foods and making ice.
- The freezing chamber is suitable for storage of meat, fish, rice balls and other foods not to be consumed in short term.
- Chunks of meat are preferably to be divided into small pieces for easy access. Please be noted food shall be consumed within the shelf time.

Drawers, food boxes, shelves, etc., placed according to the position in the picture above, is the most ideal set-up to maintain the unit's energy-efficiency.

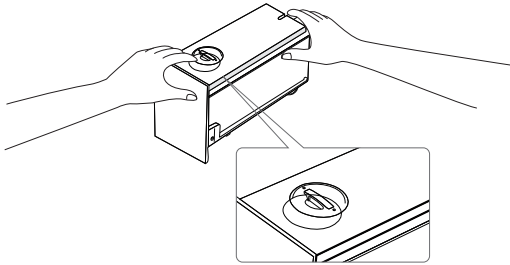
**Note: Before putting any fresh or frozen foods, the refrigerator shall have run for 2-3 hours, or for above 4 hours in summer when the ambient temperature is high. Foods storing shall not block the air outlet or otherwise the freezing effect will also be adversely affected.**

---

### 3.2 Instructions for water tank usage and adding of water.

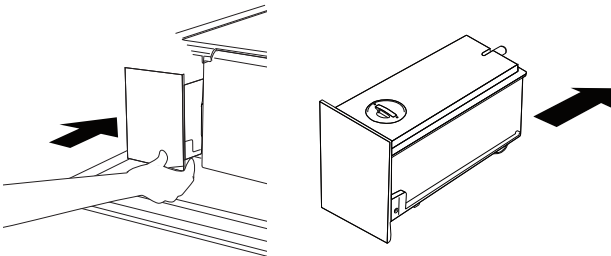
Steps of adding water:

- 1) Pull out the water tank from the refrigerator.
- 2) Open the water-injection cover.
- 3) Add bottled drinking water or alkaline water, without exceeding the Max level.



- **Do not exceed the max line. Water overflows.**
- **Fill the tank only with potable water such as mineral or purified water. Do not use other liquid. It is not allowed to add juice, milk and cola in the water tank.**

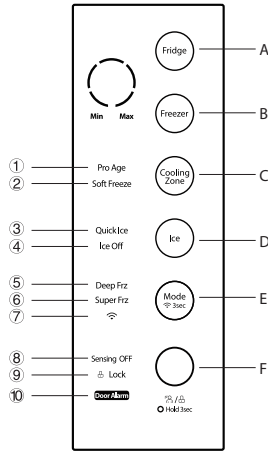
- 4) Close the water-injection cover filtered water.
- 5) Push the water tank inside until it is fixed.



- **After the water tank is pushed in, please wait for 30s before taking the first cup of water.**
- **Make sure the water tank fits into the shelf. Otherwise, the water tank may not operate properly.**
- **Do not use the refrigerator without inserting the water tank. This may decrease the cooling performance.**



### 3.3 Functions



The above pictures are for reference only. The actual configuration is subject to the purchased item or the declaration from the dealer.

#### 1. Display screen

- ① Pro Age      ② Soft Freeze      ③ Quick Ice      ④ Ice Off      ⑤ Deep Frz
- ⑥ Super Frz      ⑦ Wireless network      ⑧ Sensing Off      ⑨ Lock      ⑩ Door Alarm

#### 2. Key operation

- |              |             |                |
|--------------|-------------|----------------|
| A Fridge     | B Freezer   | C Cooling Zone |
| D Ice Making | E Mode/Wlan | F On/Off       |

#### 3. Operating Instructions

- a) When first electrified, the screen fully displays for 3 seconds. Meanwhile, the start-up ringtone sounds, and the normal function display begins.
- b) When there's a malfunction, it is being displayed in the malfunction display mode. The set temperature of the fridge is displayed when there's no malfunction.
- c) Normally, when there's no door opening or key operation for 20 seconds, the light of the screen turns off. To turn it on, please press the "○" key. The screen lights up and off in 20 seconds when there's a malfunction.

---

#### 4. Setting of Sensing Off and Lock

- 1) Hold down "○" for 3 seconds until the buzzer sounds.
- 2) Press the "○" key once to make the "Sensing OFF" icon light up.
- 3) Press the "○" key twice to make the "Sensing OFF" icon will off and the "Lock" icon bright.
- 4) Press the "○" key thrice to brighten the "Sensing OFF" and "Lock" icons.
- 5) Press the "○" key four times until the "Sensing OFF" and "Lock" icons will off.

Note:

- 1) In the "Lock" mode, when any key is pressed, "Lock" flashes thrice, meaning no operation can be done.
- 2) When "Sensing Off" is set successfully, the ambience light remains dark at the approach of people, and the "○" key on the display panel lights up (half bright).

#### 5. Setting of the temperature of the freezer

Press the "Freezer" key. The "weak" and "strong" icons remain bright, and the temperature can be adjusted. The adjustable temperature levels of the freezer are as follows: -16°C (weak end) → -18°C → -20°C → -22°C → -24°C (strong end) → -22°C → -20°C... Without key operation, the adjustment will take effect automatically in 10 seconds.

#### 6. Setting of the temperature of the fridge

Press the "Fridge" key. The "weak" and "strong" icons remain bright, and the temperature can be adjusted. The adjustable temperature levels of the fridge are as follows: 8°C (weak end) → 6°C → 4°C → 3°C → 2°C (strong end) → 3°C → 4°C... Without key operation, the adjustment will take effect automatically in 10 seconds.

#### 7. Setting of the cooling zone

Press the "Cooling Zone" key. At each adjustment of the temperature, the circle goes like this: pro age (-1°C) → softfreeze (-3°C) → cooling zone closing → proage (-1°C) → ... Without key operation, the adjustment will take effect automatically in 10 seconds.

- 1) In "cooling zone closing," the "Pro Age" and "Soft Freeze" icons will off;
- 2) In "pro age," the "Pro Age" icon brightens, and the "Soft Freeze" icon will off;
- 3) In "soft freeze," the "Pro Age" icon will off, and the "Soft Freeze" icon lights up.

#### 8. Ice Making Setting

Press the "Ice" key. At each adjustment, the circle goes like this:

quick ice → ice off → all off (ordinary ice making) → quickice → ...

Without key operation, the adjustment will take effect automatically in 10 seconds.

- 1) In "quck ice," the "Quick Ice" icon brightens, and the "Ice Off" icon will off;
- 2) In "ice off," the "Quick Ice" icon will off, and the "Ice Off" icon brightens;
- 3) After being set, the "quick ice" mode ends in 8 hours, where the "Quick Ice" icon darkens and the ordinary ice making function begins. The ice making function stops only when "ice off" is set.

---

## 9. Deep Frz and Super Frz

Press the "Mode 3 Sec" key. At each adjustment, the circle goes like this:

Deep Frz (-30°C) → Super Frz (-24°C) → normal freeze control → Deep Frz (-30°C)...  
Without key operation, the adjustment will take effect automatically in 10 seconds.

### 1) Deep Frz Mode(-30°C):

- a) When the "deep frz" mode is set, the "Deep Frz" icon fully brightens. The temperature of the freezer is automatically set for -30°C;
- b) When the machine withdraws from the "deep frz" mode, the "Deep Frz" icon will off. The temperature of the freezer automatically returns to the set temperature before the "deep frz" mode.
- c) In the "deep frz" mode, adjust the "Freezer" key to withdraw from the mode. The temperature of the freezer automatically comes back to the set temperature before the "deep frz" mode.
- d) When setting the "super frz" mode in the "deep frz" mode, withdraw from the "deep frz" mode first before entering the "super frz" mode.

### 2) Super Frz Mode (-24°C):






- a) In the "super frz" mode, the "Super Frz" icon brightens, and the temperature of the freezer is automatically set for -24°C;
- b) When the machine withdraws from the "super frz" mode, the "Super Frz" icon will off. The temperature of the freezer automatically returns to the set temperature before the "super frz" mode.
- c) Adjust the "Freezer" key to withdraw from the "super frz" mode. The temperature of the freezer automatically returns to the set temperature before the "super frz" mode.
- d) When setting the "deep frz" mode in the "super frz" mode, withdraw from the "super frz" mode first before entering the "deep frz" mode.

## 10. Network modes

Hold down the "Mode 3 Sec" key 3s to choose the network. The user can forcefully set the

WiFi module of the fridge for the AP mode. The "Mode 3 Sec" key flashes; after entering the AP mode upon successful module setting, the machine withdraws from the AP mode automatically. The temperature displayed in the temperature display zone becomes normal; in the AP mode, if the module setting remains unsuccessful for 10s, forcefully withdraw from the AP mode so the temperature can be displayed normally.

## 11. Fine-tuning function

Press and hold the " " and " " keys for 3 seconds; the left half of the screen will go completely dark to indicate entry into the fine adjustment function; press the " " key to fine-tune the start/stop temperature of the refrigeration, press the " " key to fine-tune the start/stop temperature of the freezing, press the " " key to fine-tune the start/stop temperature of the variable temperature; if no operation is performed after 10 seconds, the fine adjustment function setting will exit.

The adjustment range for the refrigeration start/stop points is: +1°C, +0.5°C, 0°C, -0.5°C, -1°C;

The adjustment range for the freezing start/stop points is: +1°C, +0.5°C, 0°C, -0.5°C, -1°C;

The adjustment range for the variable temperature start/stop points is: +1.5°C, +1°C, +0.5°C, 0°C, -0.5°C, -1°C, -1.5°C;

## 12. When an error happens, different combinations of the flashing times of the Super Frz icon+the Quick Ice icon represent different errors.

Notification of errors	Fault name	Fault entry	Fault treatment
2 Super Frz + 1 Quick Ice	Fault of the fridge's temperature sensor	Detected temperature of the sensor<-50°C, or it>+60°C.	Start and stop the cooling of the fridge alternately.
Super Frz 5 + Quick Ice 1	Fault of the freezer's temperature sensor	Detected temperature of the sensor<-50°C, or it>+60°C.	Start and stop the freezing of the freezer alternately.
Super Frz 1 + Quick Ice 2	Fault of the interchangeable temperature chamber's sensor	Detected temperature of the sensor<-50°C, or it>+60°C.	Start and stop the cooling of the interchangeable temperature chamber alternately.
Super Frz 1 + Quick Ice 1	Fault of the freezer's defrosting sensor	Detected temperature of the sensor<-50°C, or it>+60°C.	Stop the heater on time during defrosting.
Super Frz 6 + Quick Ice 2	Communication fault	Failing to communicate 8s after the refrigerator is electrified or after the refrigerator has worked for one minute	Operate the master control board according to its setting before the fault happens.
Super Frz 6 + Quick Ice 1	Fault of the environmental temperature	Detected temperature of the sensor<-50°C, or it >+65°C.	Environmental temperature=25°C

Notification of errors	Fault name	Fault entry	Fault treatment
Super Frz 1 + Quick Ice 5	Fault of the humidity sensor	Detected humidity<5%RH or it>105%RH (no alarm after 3 min)	Environmental temperature=85% of humidity
Super Frz 1 + Quick Ice 4	Fault of the ice maker (initialization)	Abnormal initialization of ice maker to find zero position	Waiting for the ice maker to restart
Super Frz 4 + Quick Ice 1	Ice maker bottom sensor failure	Open or short circuit of the temperature sensor	Ice maker not making ice
Super Frz 3 + Quick Ice 5	EEPROM faults	EEPROM faults (only displayed during self-inspection)	Control according to factory settings.

### 3.4 Setting of Ice Making

#### 1. Quick ice making

- a) When people approach the fridge, the "○" key brightens. Lightly touch the "○" key, and the operating panel brightens.
- b) At a touch of the "Ice" key, the "QuickIce" icon lights up, and quick ice making begins. The process finishes automatically in about 8 hours, and enters ordinary ice making mode (the "QuickIce" icon will off).
- c) The method of stopping halfway is the same as the setting operation: press the "Ice" key repeatedly to darken the "QuickIce" icon and enter the ordinary ice making mode.

#### 2. When not using ice making

- a) When people approach the fridge, the "○" key brightens. Lightly touch the "○" key, and the operating panel brightens.
- b) When the "Ice" key is pressed, the "Ice Off" icon lights up.
- c) The disabling method is the same as the setting operation: press the "Ice" key repeatedly to darken the "Ice Off" icon and start the ice making procedure.

#### 3. Ordinary ice making

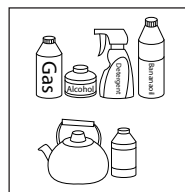
When both the "QuickIce" and "Ice Off" icons will off, the fridge enters the ordinary ice making mode.

- Quick ice making fails even if the indicator is on when there's no water in the water supply box, or the ice box is full.
- In the "quick ice" mode, the ice making sound is loud, which is normal.

## 4. Maintenance and care of the refrigerator

### 4.1 Overall cleaning

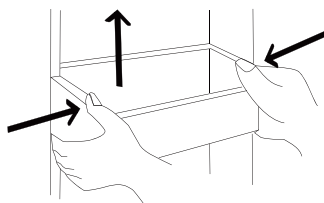
- Dusts behind the refrigerator and on the ground shall be timely cleaned to improve the cooling effect and energy saving.
- Check the door gasket regularly to make sure there are no debris. Clean the door gasket with a soft cloth dampened with soapy water or diluted detergent.
- The interior of the refrigerator should be cleaned regularly to avoid odor.
- Please turn off the power before cleaning interior, remove all foods, drinks, shelves, drawers, etc.
- Use a soft cloth or sponge to clean the inside of the refrigerator, with two tablespoons of baking soda and a quart of warm water. Then rinse with water and wipe clean. After cleaning, open the door and let it dry naturally before turning on the power.
- For areas that are difficult to clean in the refrigerator (such as narrow sandwiches, gaps or corners), it is recommended to wipe them regularly with a soft rag, soft brush, etc. and when necessary, combined with some auxiliary tools (such as thin sticks) to ensure no contaminants or bacterial accumulation in these areas.
- Do not use soap, detergent, scrub powder, spray cleaner, etc. as these may cause odors in the interior of the refrigerator or contaminated food.
- Clean the bottle frame, shelves and drawers with a soft cloth dampened with soapy water or diluted detergent. Dry with a soft cloth or dry naturally.
- Wipe the outer surface of the refrigerator with a soft cloth dampened with soapy water, detergent, etc., and then wipe dry.
- Do not use hard brushes, clean steel balls, wire brushes, abrasives (such as toothpastes), organic solvents (such as alcohol, acetone, banana oil, etc.), boiling water, acid or alkaline items, which may damage the fridge surface and interior. Boiling water and organic solvents such as benzene may deform or damage plastic parts.
- Do not rinse directly with water or other liquids during cleaning to avoid short circuits or affect electrical insulation after immersion.



**Please unplug the refrigerator for defrost and cleaning.**

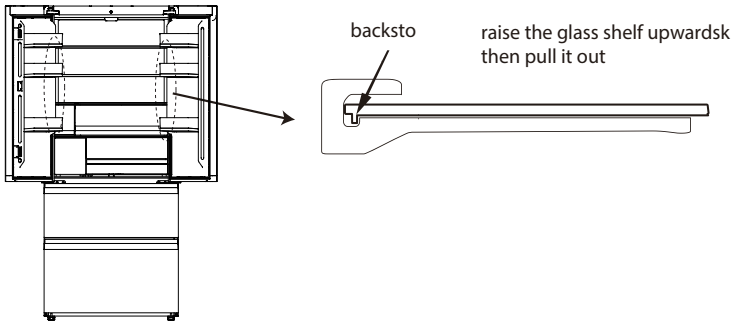
### 4.2 Cleaning of door tray

- According to the direction arrow in the figure below, use both hands to squeeze the tray, and push it upward, then you can take it out.
- After washing the tray having been taken out, you can adjust its installing height in accordance with your requirement.



### 4.3 Cleaning of Glass shelf

- As the innermost part of the refrigerator liner where contacting the shelves has a backstop, you shall raise the shelves upward, then you can be able to take it out.
- Adjust or clean the shelves according to your requirement. Soft towels or sponge dipped in water and non-corrosive neutral detergents are suggested for cleaning. The freezer of shall be finally cleaned with clean water and dry cloth. Open the door for natural drying before the power is turned on. Do not use hard brushes, clean steel balls, wire brushes, abrasives, such as toothpastes, organic solvents (such as alcohol, acetone, banana oil, etc.), boiling water, acid or alkaline items clean refrigerator considering that this may damage the fridge surface and interior.

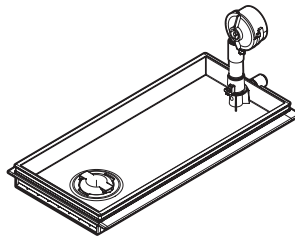
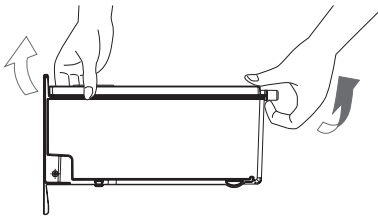


(The picture above is only for reference. The actual configuration will depend on the physical product or statement by the distributor)

### 4.4 Cleaning of the Water Supply Box

Water supply box, lid of the water supply box, gasket (on the lid) once/week  
Disassembly method:

- 1) Pull the lid up
- 2) Remove the gasket (on the lid) through the cracks on the sides of the lid.



The assembly method is opposite to the disassembly method.

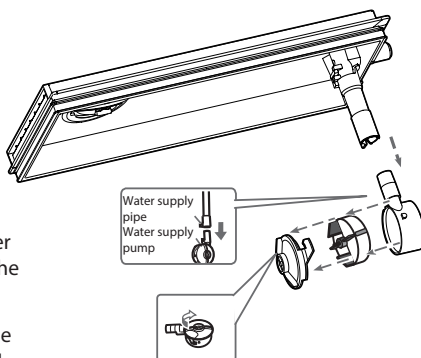
## 4.5 Cleaning of the Water Supply Pipe and the Water Supply Pump

1. Remove the water supply pipe by rotating it in the direction of the arrow.



Water supply pipe

2. Disconnect the water supply pump from the water supply pipe.
3. Remove the lid of the water supply pump by rotating it in the direction of the arrow.



The installation method is opposite to the disassembly method. Please confirm that all parts are installed in place, otherwise the water cannot be supplied.

## 4.6 Defrosting

- The refrigerator is made based on the air-cooling principle and thus has automatic defrosting function. Frost formed due to change of season or temperature may also be manually removed by disconnection of the appliance from power supply or by wiping with a dry towel.

## 4.7 Out of operation

- Power failure: In case of power failure, even if it is in summer, foods inside the appliance can be kept for several hours; during the power failure, the times of door opening shall be reduced, and no more fresh food shall be put into the appliance.
- Long-time nonuse: The appliance shall be unplugged and then cleaned; then the doors are left open to prevent odor.
- Moving: Before the refrigerator is moved, take all objects inside out, fix the glass partitions, vegetable holder, freezing chamber drawers and etc. with tape, and tighten the leveling feet; close the doors and fix them with tape. During moving, the appliance shall not be laid upside down or horizontally, or be vibrated; the inclination during movement shall be no more than 45°.



**The appliance shall run continuously once it is started. Generally, the operation of the appliance shall not be interrupted; otherwise the service life may be impaired.**



## 5. Trouble shooting

- You may try to solve the following simple problems on your own. If they cannot be solved, please contact the after-sales department.

Occurrence	Possible cause/inspection items
Failed operation	Check whether the appliance is connected to power or whether the plug is in well contact Check whether the voltage is too low Check whether there is a power failure or partial circuits have tripped
Odor	Odorous foods shall be tightly wrapped Check whether there is any rotten food Clean the inside of the refrigerator
Long-time operation of the compressor	Long operation of the refrigerator is normal in summer when the ambient temperature is high It is not suggestible having too much food in the appliance at the same time Food shall get cool before being put into the appliance The doors are opened too frequently
Light fails to get lit	Check whether the refrigerator is connected to power supply and whether the illuminating light is damaged Have the light replaced by a specialist
Doors cannot be properly closed	The door is stuck by food packages Too much food is placed The refrigerator is tilted
Loud noise	Check whether the floor is level and whether the refrigerator is placed stably Check whether accessories are placed at proper locations
Door seal fails to be tight	Remove foreign matters on the door seal Heat the door seal and then cool it for restoration (or blow it with an electrical drier or use a hot towel for heating)
Water pan overflows	There is too much food in the chamber or food stored contains too much water,resulting in heavy defrosting The doors are not closed properly, resulting in frosting due to entry of air and increased water due to defrosting
Hot housing	Heat dissipation of the built-in condenser via the housing, which is normal When housing becomes hot due to high ambient temperature, storage of too much food or shutdown of the compressor is shut down, provide sound ventilation to facilitate heat dissipation
Surface condensation	Condensation on the exterior surface and door seals of the refrigerator is normal when the ambient humidity is too high. Just wipe the condensate with a clean towel
Abnormal noise	Buzz: The compressor may produce buzzes during operation, and the buzzes are loud particularly upon start or stop. This is normal. Creak: Refrigerant flowing inside of the appliance may produce creak, which is normal

## 6. Disposal of your appliance

---



**Correct Disposal of this product:**  
This marking indicates that this product should not be disposed with other household wastes throughout the EU. To prevent possible harm to the environment or human health from uncontrolled waste disposal, recycle it responsibly to promote the sustainable reuse of material resources. To return your used device, please use the return and collection systems or contact the retailer where the product was purchased. They can take this product for environmental safe recycling.

### AMBIENT TEMPERATURE

This appliance is designed to operate in ambient temperature specified by its category marked on the rating plate.

Climate category	Ambient temperature (from...to...)
SN	+10°C to +32°C
N	+16°C to +32°C
ST	+16°C to +38°C
T	+16°C to +43°C

**#DetailsMatter**

Hefei Hualing Co., Ltd.  
No.176 JinXiu Road, Hefei Economy & Technology Development Area, 230601,  
Hefei, Anhui, P.R. China  
MADE IN CHINA

<https://www.toshiba-lifestyle.com/sg/>