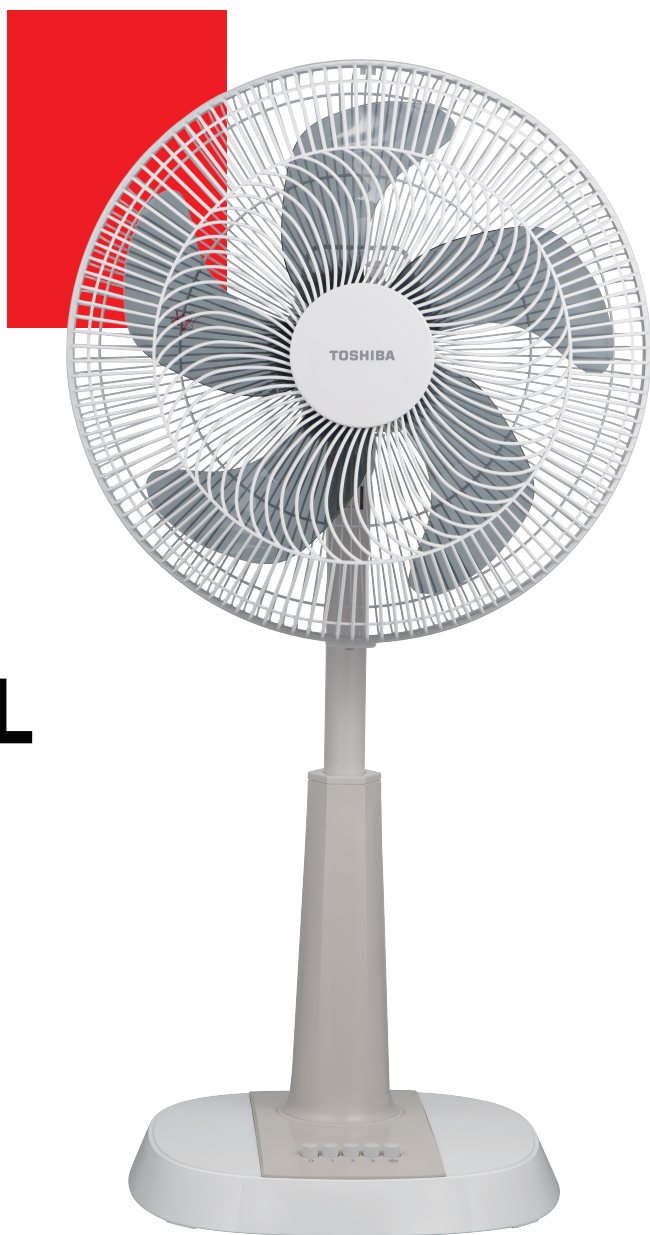


# USER MANUAL

**STAND FAN**  
F-ALC50TH(A)

**TOSHIBA**







# CONTENTS

SAFETY INSTRUCTIONS .....	01
SPECIFICATIONS .....	02
PRODUCT OVERVIEW .....	03
OPERATION INSTRUCTIONS .....	05
CLEANING AND MAINTENANCE .....	06

# SAFETY INSTRUCTIONS

## CAUTION

- Read Rules for Safe Operation and Instructions Carefully.

## WARNING

- If the supply cord is damaged, it must be replaced by manufacturer or its service agent or a similarly qualified person in order to avoid a hazard.
- To protect against the risk of electrical shock, do not immerse the unit, cord or plug in water or other liquid.
- This appliance is not intended for use by persons (including children) with reduced physical, sensory or mental capabilities, or lack of experience and knowledge, unless they have been given supervision or instruction concerning use of the appliance by a person responsible for their safety. Children should be supervised to ensure that they do not play with the appliance.
- When the appliance is not in use and before cleaning, unplug the appliance from the outlet.
- Keep electrical appliances out of reach from Children or infirm persons. Do not let them use the appliances without supervision.

## RULES FOR SAFE OPERATION

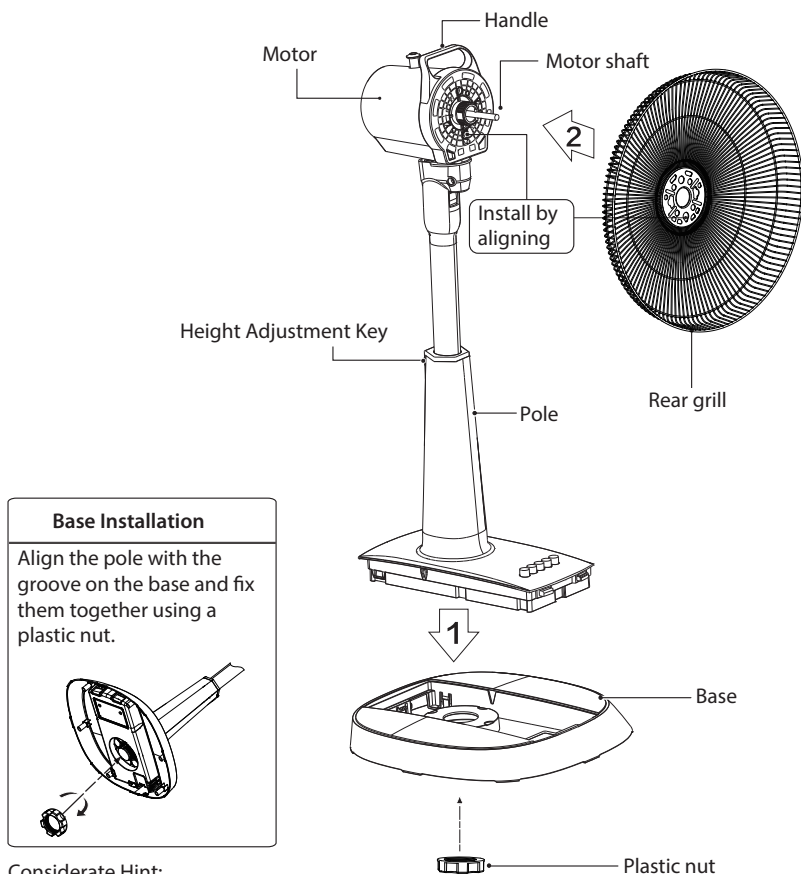
- Never insert fingers, pencils, or any other object through the grille when fan is running.
- Disconnect fan when moving from one location to another.
- Be sure fan is on a stable surface when operating to avoid overturning.
- DO NOT use fan in window, rain may create electrical hazard.
- Indoor use only.
- Operate the fan after ensuring the grill and blade is installed.

# SPECIFICATIONS

Model	F-ALC50TH(A)
Rated voltage	220-240V 50Hz
Rated power	60W

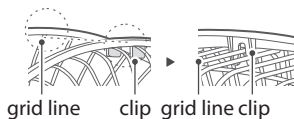
# PRODUCT OVERVIEW

## Part Figure

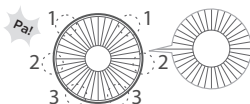


## Front And Rear Guard Installation

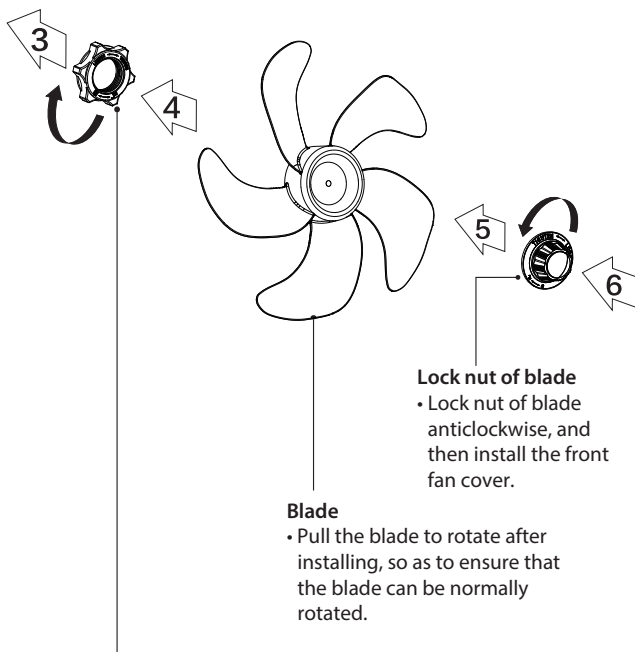
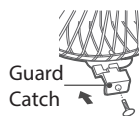
Align the front grill buckle with the top line on the rear grill, then look at the schematic from the back.



Press guards sequentially with both hands. With the "click", the installation is in place.



Self-Catch Installation

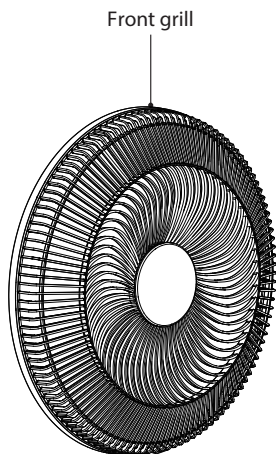


### Lock nut of blade

- Lock nut of blade anticlockwise, and then install the front fan cover.

### Blade

- Pull the blade to rotate after installing, so as to ensure that the blade can be normally rotated.

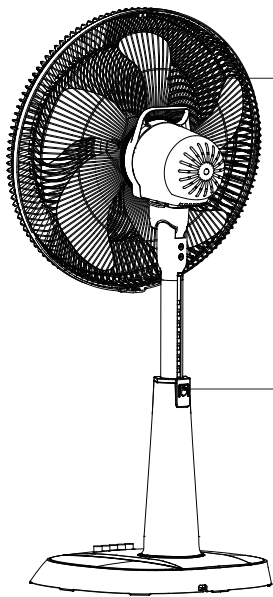


### Lock nut of grill

- Screw the lock nut of grill clockwise, and in the meantime, fix the rear grill.

# Instructions For Use

Instructions for operation of body



90-degree pitch adjustment

Manual

Height Adjustment

Press the key to adjust the height.  
Adjusting the height after the fan is installed.

# CLEANING AND MAINTENANCE

## Maintenance Instruction

The fan requires little maintenance. Do not try to fix it by yourself. Refer it to qualified service personnel if service is needed.

1. Before cleaning and assembling, fan must be unplugged.
2. To ensure adequate air circulation to the motor, keep vents at the rear of the motor free of dust. Do not disassemble the fan to remove dust.
3. Please wipe the exterior parts with a soft cloth soaking a mild detergent.
4. Do not use any abrasive detergent or solvents to avoid scratching the surface.  
Do not use any of the following as a cleaner: gasoline, thinner.
5. Do not allow water or any other liquid into the motor housing or interior parts.

## Cleaning

1. Be sure to unplug from the electrical supply source before cleaning.
2. Plastic parts should be cleaned with a soft cloth moisten with mild soap. Thoroughly remove soap film with dry cloth.

**#DetailsMatter**



6 939924 852171

<https://www.toshiba-lifestyle.com/th>