

# REFRIGERATOR FREEZER

For Home Use Only

GR-RS755WIA-PGTH(22)



- Thank you very much for purchasing this Toshiba product.
- Read this Owner's Manual and become completely familiar with the product before use in order to use this product safely and correctly.
- Keep this Owner's Manual in a handy place for future reference.
- Make sure that you received your warranty.

# CONTENTS

---

<b>1. Safety warnings .....</b>	<b>1</b>
1.1 Warning.....	1
1.2 Meaning of safety warning symbols .....	4
1.3 Electricity related warnings .....	4
1.4 Warnings for using .....	5
1.5 Warnings for placement.....	6
1.6 Warnings for energy .....	7
1.7 Warnings for disposal.....	7
<b>2. Proper use of the freezer.....</b>	<b>8</b>
2.1 Placement .....	8
2.2 Leveling feet .....	9
2.3 Leveling door .....	10
2.4 Changing the Light .....	11
2.5 Starting .....	12
2.6 Energy saving tips .....	12
<b>3. Structure and functions .....</b>	<b>13</b>
3.1 Key components .....	13
3.2 Instructions for water tank use and addition .....	14
3.3 Functions.....	15
3.4 Integrated machine for drinking water and ice making .....	18
<b>4. Maintenance and care of the refrigerator .....</b>	<b>19</b>
4.1 Overall cleaning .....	19
4.2 Cleaning of door tray .....	19
4.3 Clean the Ice container .....	20
4.4 Cleaning of Glass shelf.....	21
4.5 Cleaning of Water Tank filter .....	21
4.6 Defrosting .....	22
4.7 Out of operation .....	22
<b>5. Trouble shooting .....</b>	<b>23</b>
<b>6. Disposal of your appliance .....</b>	<b>24</b>

# 1. Safety warnings

---

## READ SAFETY PRECAUTIONS BEFORE INSTALLATION

To prevent injury to the user or other people and property damage, the following instructions must be followed. Incorrect operation due to ignoring of instructions may cause harm or damage.

### 1.1 Warning

#### **▲ WARNING**



Warning: risk of fire / flammable materials

- **WARNING: Risk of fire/disaster and explosion**  
The refrigerant of the appliance is flammable, please be care not to damage the cooling pipes during installation and transportation.  
If gas leakage happens, please contact the distributor or local service agent, and the following precautions should be always taken:
  1. Open the windows for ensuring good ventilation.
  2. No fire around and please do not use other electric appliance.
- This appliance is intended to be used in household and similar applications such as staff kitchen areas in shops, offices and other working environments; farm houses and by clients in hotels, motels and other residential type environments; bed and breakfast type environments; catering and similar non-retail applications.
- Children should be supervised to ensure that they do not play with the appliance.
- **WARNING: Risk of fire disaster and electric shock**  
The power cord should be replaced when it has been damaged; please contact the distributor or local service agent for replacement.
- Please unplug the power plug from socket when clean the appliance or leave the appliance nonuse for a long time.
- Do not use extension cord or ungrounded (two prong) adapters.
- **WARNING: Keep ventilation openings, in the appliance enclosure or in the built-in structure, clear of obstruction.**
- **WARNING: Do not use mechanical devices or other means to accelerate the defrosting process, other than those recommended by the manufacturer.**
- **WARNING: Do not damage the refrigerant circuit.**
- **WARNING: Do not use electrical appliances inside the food storage compartments of the appliance, unless they are of the type recommended by the manufacturer.**

- 
- **WARNING:** Please abandon the refrigerator according to local regulators for it use flammable blowing gas and refrigerant.
  - **WARNING:** When positioning the appliance, ensure the supply cord is not trapped or damaged.
  - **WARNING:** Do not locate multiple portable socket-outlets or portable power supplies at the rear of the appliance.
  - **DANGER:** Risk of child entrapment. Before you throw away your old refrigerator or freezer:
    - Take of the doors.
    - Leave the shelves in place so that children may not easily climb inside.
  - The refrigerator must be disconnected from the source of electrical supply before attempting the installation of accessory.
  - Refrigerant and cyclopentane foaming material used for the refrigerator are flammable. Therefore, when the refrigerator is scraped, it shall be kept away from any fire source and be recovered by a special recovering company with corresponding qualification other than be disposed by combustion, so as to prevent damage to the environment or any other harm.
  - For IEC standard: This appliance is not intended for use by persons(including children) with reduced physical, sensory or mental capabilities, or lack of experience and knowledge, unless they have been given supervision or instruction concerning use of the appliance by a person responsible for their safety.
  - For EN standard: This appliance can be used by children aged from 8 years and above and persons with reduce physical sensory or mental capabilities or lack of experience and knowledge if they have been given supervision or instruction concerning use of the appliance in a safe way and understand the hazards involved. Children shall not play with the appliance. Cleaning and user maintenance shall not be made by children without supervision.
  - Please do not use the appliance on traffic means(such as ship and so on).
  - If noise, odor and smoking happens, please unplug the power plug immediately, and contact the distributor or local service agent.
  - Please do not put your hands under or behind the appliance to prevent from being hurt.
  - Please leave the packing materials and other parts out of the reach of children to prevent from risk of suffocation.



- 
- To avoid contamination of food, please respect the following instructions:
    - Opening the door for long periods can cause a significant increase of the temperature in the compartments of the appliance.
    - Clean regularly surfaces that can come in contact with food and accessible drainage systems.
    - Clean water tanks if they have not been used for 48 h; flush the water system connected to a water supply if water has not been drawn for 5 days. ( note 1 )
    - Store raw meat and fish in suitable containers in the refrigerator, so that it is not in contact with or drip onto other food.
    - Two-star frozen-food compartments are suitable for storing pre-frozen food, storing or making ice-cream and making ice cubes. ( note 2 )
    - One-, two- and three star compartments are not suitable for the freezing of fresh food. (note 3)
    - For appliances without a 4-star compartment: this refrigerating appliance is not suitable for freezing foodstuffs. (note 4)
    - If the refrigerating appliance is left empty for long periods, switch off, defrost, clean, dry, and leave the door open to prevent mould developing within the appliance.
  - Note 1,2,3,4 : Please confirm whether it is applicable according to your product compartment type.
  - For a freestanding appliance: this refrigerating appliance is not intended to be used as a built-in appliance.
  - Any replacement or maintenance of the LED lamps is intended to be made by the manufacturer, its service agent or similar qualified person.
  - This product contains a light source of energy efficiency class (G).

---

## 1.2 Meaning of safety warning symbols



**Prohibition symbol**

### **This is a prohibition symbol.**

Any incompliance with instructions marked with this symbol may result in damage to the product or endanger the personal safety of the user.



**Mandatory symbol**

---

### **This is a Mandatory symbol**

It is required to operate in strict observance of instructions marked with this symbol; or otherwise damage to the product or personal injury may be caused.



**Cautioning symbol**

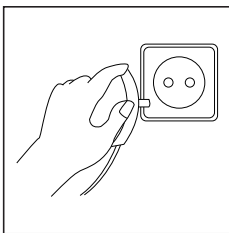
---

### **This is a cautioning symbol.**

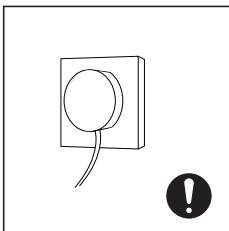
Instructions marked with this symbol require special caution. Insufficient caution may result in slight or moderate injury, or damage to the product.

**This manual contains lots of important safety information which shall be observed by users.**

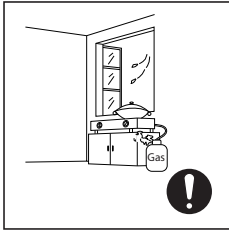
## 1.3 Electricity related warnings



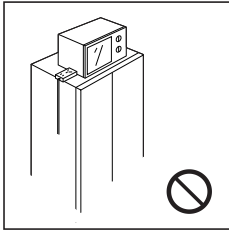
- Do not pull the power cord when pulling the power plug of the refrigerator. Please firmly grasp the plug and pull out it from the socket directly.



- To ensure safe use, do not damage the power cord or use the power cord when it is damaged or worn.
- Please do not touch the power plug with wet hand to prevent from electric shock.
- Please use a dedicated power socket and the power socket shall not be shared with other electrical appliances. The power plug should be firmly contacted with the socket or else fires might be caused.

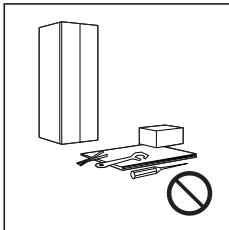


- Please ensure that the grounding electrode of the power socket is equipped with a reliable grounding line.
- Please ask for help from persons with professional qualification to examine whether the socket is with reliable grounding line or not.
- It is the end-consumers' responsibility to change the ungrounded socket into grounded socket.

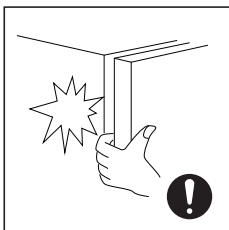


- Please turn off the valve of the leaking gas and then open the doors and windows in case of leakage of gas and other flammable gases. Do not unplug the refrigerator and other electrical appliances considering that spark may cause a fire.
- Do not use electrical appliances on the top of the appliance, unless they are of the type recommended by the manufacturer.

#### 1.4 Warnings for using



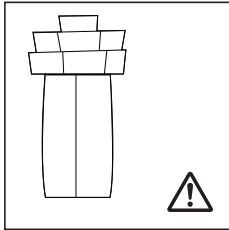
- Do not arbitrarily disassemble or reconstruct the refrigerator, nor damage the refrigerant circuit; maintenance of the appliance must be conducted by a specialist.
- Damaged power cord must be replaced by the manufacturer, its maintenance department or related professionals in order to avoid danger.



- The gaps between refrigerator doors and between doors and refrigerator body are small, be noted not to put your hand in these areas to prevent from squeezing the finger. Please be gentle when close the refrigerator door to avoid falling articles.
- Do not pick foods or containers with wet hands in the freezing chamber when the refrigerator is running, especially metal containers in order to avoid frostbite.

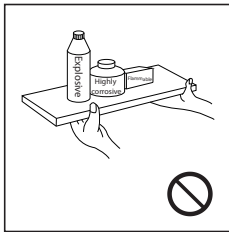


- Do not allow any child to get into or climb the refrigerator; otherwise suffocation or falling injury of the child may be caused.

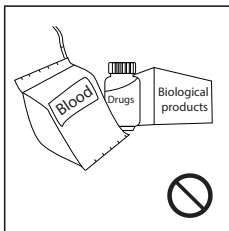


- Please do not put heavy or dangerous objects on top of the appliance (bottles, tableware, or something containing liquid)
- Please pull out the power plug when the electricity fails or clean the appliance, and connecting it to power supply after at least 5 minutes, which prevents damage to the compressor by continuous startup.

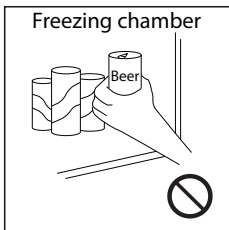
## 1.5 Warnings for placement



- Do not put flammable, explosive, volatile and highly corrosive items in the refrigerator to prevent damages to the product or fire accidents.
- Do not place flammable items near the refrigerator to avoid fires.



- The refrigerator is intended for household use, such as storage of foods; it shall not be used for other purposes, such as storage of blood, drugs or biological products, etc.



- Do not store beer, beverage or other fluid contained in bottles or enclosed containers in the freezing chamber of the refrigerator; or otherwise the bottles or enclosed containers may crack due to freezing to cause damages.

---

## 1.6 Warnings for energy

- Refrigerating appliances might not operate consistently (possibility of defrosting of contents or temperature becoming too warm in the frozen food compartment) when sited for an extended period of time below the cold end of the range of temperatures for which the refrigerating appliance is designed.
- The fact that effervescent drinks should not be stored in food freezer compartments or cabinets or in low-temperature compartments or cabinets, and that some products such as water ices should not be consumed too cold;
- The need to not exceed the storage time(s) recommended by the food manufacturers for any kind of food and particularly for commercially quick-frozen food in food-freezer and frozen-food storage compartments or cabinets;
- The precautions necessary to prevent an undue rise in the temperature of the frozen food while defrosting the refrigerating appliance, such as wrapping the frozen food in several layers of newspaper.
- The fact that a rise in temperature of the frozen food during manual defrosting, maintenance or cleaning could shorten the storage life.
- The necessity that, for doors or lids fitted with locks and keys, the keys be kept out of the reach of children and not in the vicinity of the refrigerating appliance, in order to prevent children from being locked inside.

## 1.7 Warnings for disposal



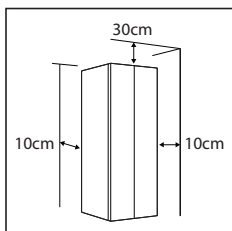
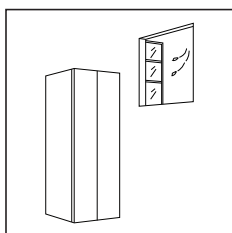
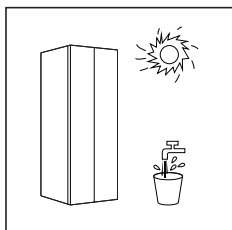
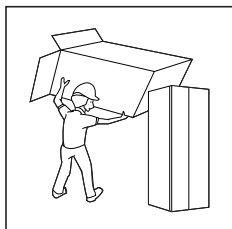
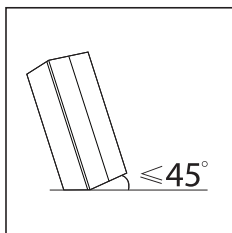
- Refrigerant and cyclopentane foaming material used for the refrigerator are flammable. Therefore, when the refrigerator is scrapped, it shall be kept away from any fire source and be recovered by a special recovering company with corresponding qualification other than be disposed by combustion, so as to prevent damage to the environment or any other harm.



- When the refrigerator is scrapped, disassemble the doors, and remove gasket of door and shelves; put the doors and shelves in a proper place, so as to prevent trapping of any child.

## 2 Proper use of the refrigerator

### 2.1 Placement



- Before the refrigerator is moved, take all objects inside out, fix the glass partitions, vegetable holder, freezing chamber drawers and etc. with tape, and tighten the leveling feet; close the doors and seal them with tape. During moving, the appliance shall not be laid upside down or horizontally, or be vibrated; the inclination during movement shall be no more than 45°.
- Before use, remove all packing materials, including bottom cushions, foam pads and tapes inside of the refrigerator; tear off the protective film on the doors and the refrigerator body. Keep away from heat and avoid direct sunlight. Do not place the freezer in moist or watery places to prevent rust or reduction of insulating effect.
- Do not spray or wash the refrigerator; do not put the refrigerator in moist places easy to be splashed with water so as not to affect the electrical insulation properties of the refrigerator.
- The refrigerator is placed in a well-ventilated indoor place; the ground shall be flat, and sturdy (rotate left or right to adjust the wheel for leveling if unstable).
- The top space of the refrigerator shall be greater than 30cm, and the refrigerator should be placed against a wall with a free distance more than 10cm to facilitate heat dissipation.



#### Precautions before installation:

**Before installation or adjusting of accessories, it shall be ensured that the refrigerator is disconnected from power. Precautions shall be taken to prevent fall of the handle from causing any personal injury.**

---

## 2.2 Leveling feet

### 1. Precautions before operation:

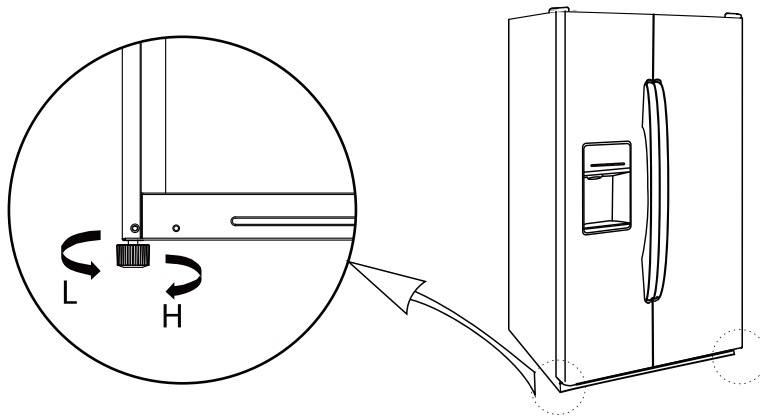
Before operation of accessories, it shall be ensured that the refrigerator is disconnected from power.

### 2. Schematic diagram of the leveling feet:

Before adjusting the leveling feet, precautions shall be taken to prevent any personal injury.

### 3. Adjusting procedures:

- Turn the feet clockwise to raise the refrigerator;
- Turn the feet counterclockwise to lower the refrigerator;
- Adjust the right and left feet based on the procedures above to a horizontal level.




(The picture above is only for reference. The actual configuration will depend on the physical product or statement by the distributor)

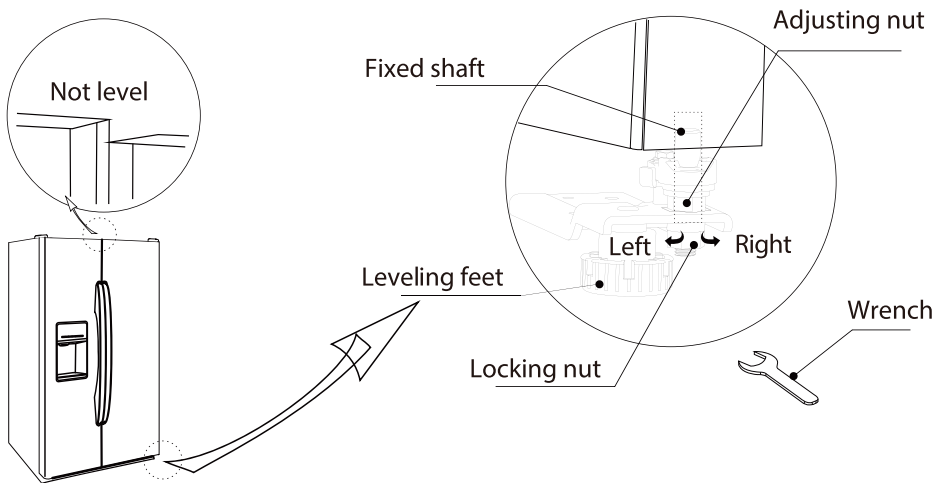
## 2.3 Leveling door

### 1. Precautions before operation:

Before operation of accessories, it shall be ensured that the refrigerator is disconnected from power. Before adjusting the door, precautions shall be taken to prevent any personal injury.

### 2. Schematic diagram of levelling the door body.

List of tools to be provided by the user	
 M10	Wrench



(The picture above is only for reference. The actual configuration will depend on the physical product or statement by the distributor)

### When the fridge door is low:

- Open the door, use a wrench to loosen the locking nut and to rotate the adjusting nut anti-clockwise to raise the height of the door. Once the doors are aligned, then tighten the locking nut by rotating it anti-clockwise.

### When the fridge door is high:

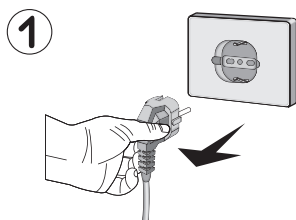
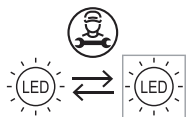
- Open the door, use a wrench to rotate the adjusting nut clockwise to lower the height of the door. Once the doors are aligned, then tighten the locking nut by rotating it anti-clockwise.



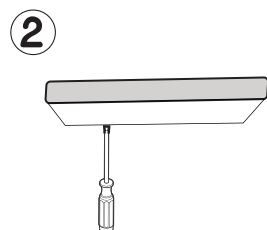
---

## 2.4 Changing the Light

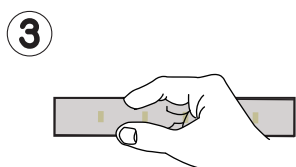
Any replacement or maintenance of the LED lamps is intended to be made by the manufacturer, its service agent or similar qualified person.



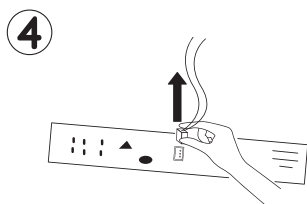
1. Please take out the plug before removal.



2. Remove the lampshade with a screwdriver.



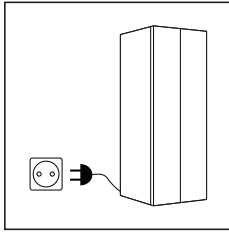
3. Take down the lamp panel.



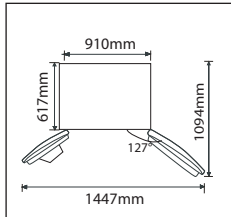
4. Remove the connection terminal.

---

## 2.5 Starting



- Before initial start, keep the refrigerator still for half an hour before connecting it to power supply.
- Before putting any fresh or frozen foods, the refrigerator shall have run for 2-3 hours, or for above 4 hours in summer when the ambient temperature is high.



- Spare enough space for convenient opening of the doors and drawers or statement by the distributor.

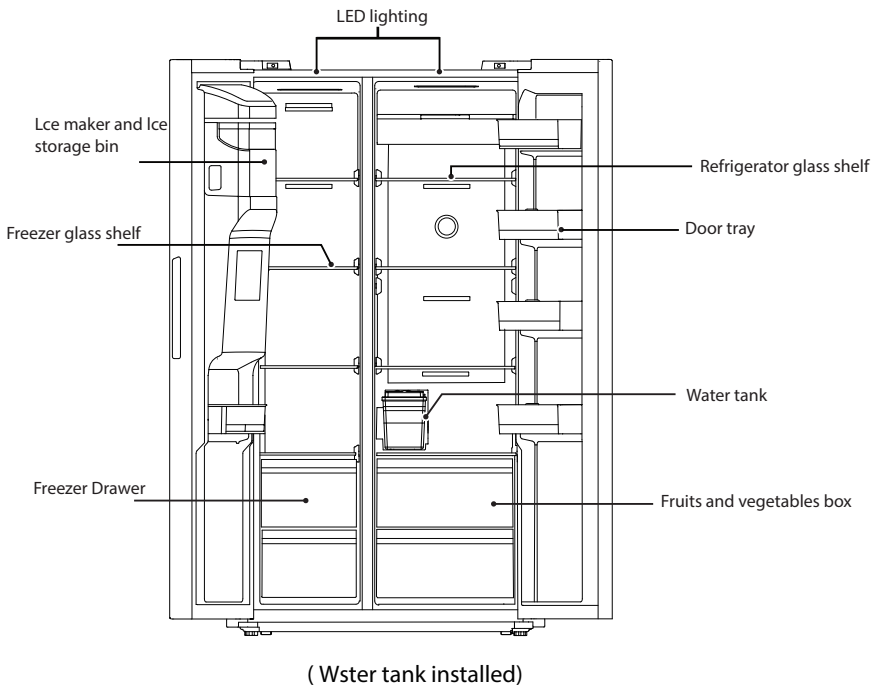
## 2.6 Energy saving tips

- The appliance should be located in the coolest area of the room, away from heat producing appliances or heating ducts, and out of the direct sunlight.
- Let hot foods cool to room temperature before placing in the appliance. Overloading the appliance forces the compressor to run longer. Foods that freeze too slowly may lose quality, or spoil.
- Be sure to wrap foods properly, and wipe containers dry before placing them in the appliance. This cuts down on frost build-up inside the appliance.
- Appliance storage bin should not be lined with aluminum foil, wax paper, or paper toweling. Liners interfere with cold air circulation, making the appliance less efficient.
- Organize and label food to reduce door openings and extended searches. Remove as many items as needed at one time, and close the door as soon as possible.

### 3. Structure and functions

---

#### 3 1 Key components



(The picture above is only for reference. The actual configuration will depend on the physical product or statement by the distributor)

#### Refrigerating chamber

- The Refrigerating chamber is suitable for storage of a variety of fruits, vegetables, beverages and other food consumed in the short term, suggested storage time 3 days to 5 days.
- Cooking foods shall not be put in the refrigerating chamber until cooled to room temperature.
- Foods are recommended to be sealed up before putting into the refrigerator.
- The glass shelves can be adjusted up or down for a reasonable amount of storage space and easy use.

#### Freezing chamber

- The low temperature freezing chamber may keep food fresh for a long time and it is mainly used to store frozen foods and making ice.
- The freezing chamber is suitable for storage of meat, fish, rice balls and other foods not to be consumed in short term.
- Chunks of meat are preferably to be divided into small pieces for easy access. Please be noted food shall be consumed within the shelf time.

Drawers, food boxes, shelves, etc. placed according to the position in the picture above are the most energy efficient.

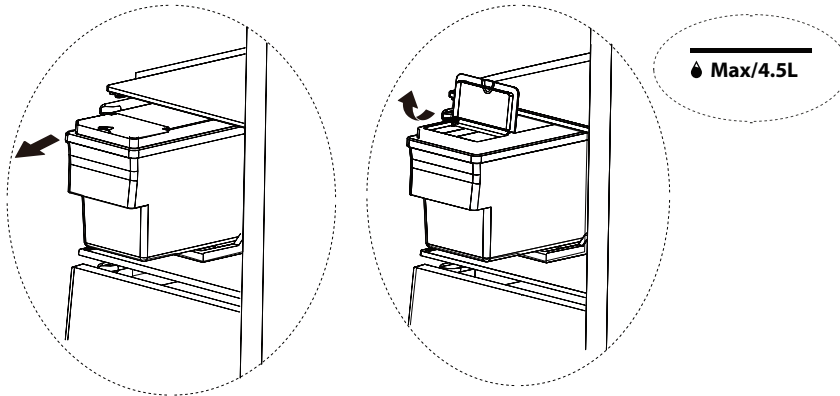
**Note: Storage of too much food during operation after the initial refrigerator. Foods stored shall not block the air outlet; or otherwise the freezing effect will also be adversely affected.**

---

### 3.2 Instructions for water tank use and addition

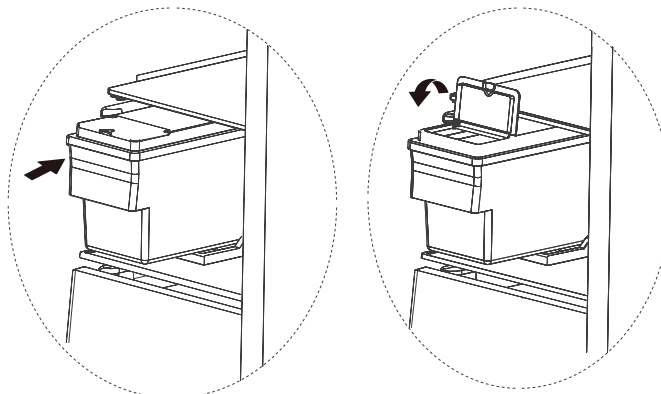
Steps of adding water:

- 1) Pull out the water tank from the refrigerator.
- 2) Open the water-injection cover.
- 3) Add bottled drinking water or alkaline water, without exceeding the Max level.



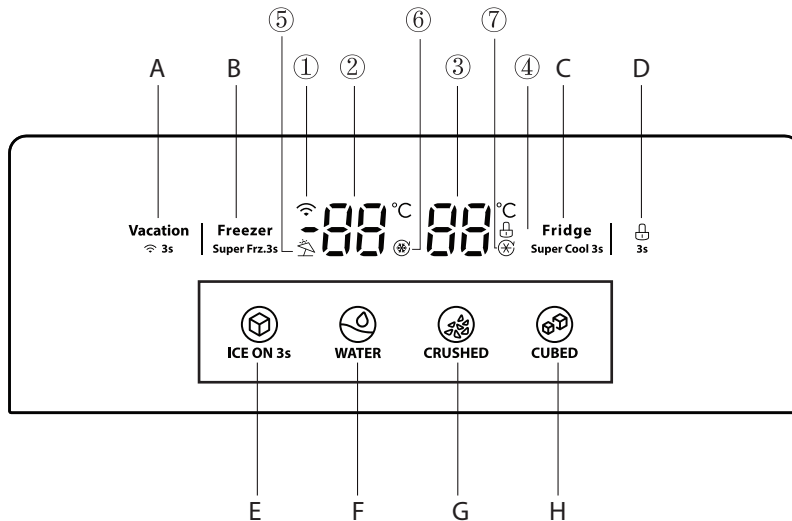
- **Do not exceed the max line. Water overflows.**
- **Fill the tank only with potable water such as mineral or purified water. Do not use other liquid. It is not allowed to add juice, milk and cola in the water tank.**

- 4) Close the water-injection cover filtered water.
- 5) Push the water tank inside until it is fixed.



- **After the water tank is pushed in, please wait for 30s before taking the first cup of water.**
- **Make sure the water tank fits into the shelf. Otherwise, the water tank may not operate properly.**
- **Do not use the refrigerator without inserting the water tank. This may decrease the cooling performance.**

### 3.3 Functions



The picture above is only for reference. The actual configuration will depend on the physical product or statement by the distributor

#### 1. Display screen

- ① Wireless network      ② Freezer temperature      ③ Fridge temperature      ④ Close/open icon
- ⑤ Vacation mode      ⑥ Super freeze mode      ⑦ Super cool mode

#### 2. Buttons

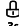

- A Vacation function      B Freezer/super freeze      C Fridge/super cool      D Lock/unlock
- E Ice machine on/off      F Water outlet mode      G Ice crushing mode      H Ice cube mode

#### 3. Operation instructions


##### 1) Display

- a) When the refrigerator is powered on for the first time, the whole display is on for **3s** and then shows normal operation after the start-up bell rings.
- b) When there is a fault, the fault code will be displayed (cyclic display); when there is no fault, the set temperature of the fridge and freezer will be displayed.
- c) Under normal circumstances, if there is no door opening action or button operation for **30s**, the display will be locked, and the display screen will go out after the locked state continued for **30s**; when the display screen is not on, if there is button operation, the display screen will light up; when a fault with visible fault code occurs, the display screen will light up and then go out after **30s**.

## 2) Lock/unlock


- In the unlock state, long press the button  for 3s, and the icon will light up to enter the lock state.
- In the lock state, long press the button  for 3s, and the icon will go out. Then the lock state will be released.
- The button will automatically enter the lock state after 30s without any operation. (The display panel of music buzzer sounds and the buzzer will be locked at the same time)
- The alarm sound can be released in the lock state; other button operations must be carried out in the unlock state. otherwise, an error buzzer will be given.

## 3) Fridge temperature adjustment

Press the button  to adjust the temperature. Each time the button is pressed, the temperature will be reduced by 1°C;


The temperature setting range of the fridge is 2~8 °C. When the set temperature is 2°C, click the button again, and the set temperature of the fridge will switch to 8°C.

## 4) Freezer temperature adjustment

Press the button  to adjust the temperature. Each time the button is pressed, the temperature will be reduced by 1°C;

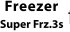
The temperature setting range of the freezer is -16~-24 °C. When the set temperature is -24°C, click the button again, and the set temperature of the freezer will switch to -16°C.

## 5) Super cool mode

Long press the button  for 3s to enter the super cool state, and long press the button again for 3s to exit the state.

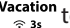
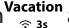
When the super cool mode is set, the fridge temperature is automatically set to 2°C; when the mode is exited, the set temperature of the fridge will automatically switch back to the set temperature before.

## 6) Super freeze mode

Long press the button  for 3s to enter the super freeze state, and long press the button again for 3s to exit the state.

When the super freeze mode is set, the freezer temperature is automatically set to -24°C; when the mode is exited, the set temperature of the freezer will automatically switch back to the set temperature before.

## 7) Vacation mode



Press the button  to enter the vacation mode, and press the button  again to exit the mode.

When the vacation mode is set, the freezer temperature is automatically set to -18°C, and the fridge is turned off; when the mode is exited, the set temperature of the freezer and the fridge will automatically switch back to the set temperature before.


## 8) Power-off storage


In case of power failure, the instantaneous working state will be locked, and this state can last until power is on.

## 9) Prompt operation and alarm control

When the refrigerator door is not closed for 120s, a short alarm sound will be given to prompt that the door is not closed. Please close the door in time or click any button in the operation area of the display screen to end the alarm sound. Press and hold buttons  and  at the same time for 3s to enable or disable the door opening/closing prompt.

## 10) Wireless network setting

After the refrigerator is powered on, press and hold the button  for 3s, and the temperature display area of the display and control panel will display "AP", indicating that the wireless network can be connected.

Log in to the TSmartLife App with your mobile phone and connect to the wireless network according to the instructions of the App. The symbol  is always on in the connected state.

See the attachment for the downloading method of the TSmartLife App and the wireless network connection method.



---

### 11) Fault indication

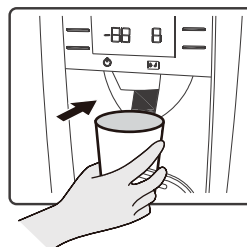
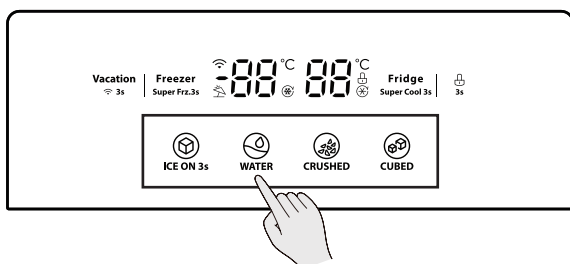
When the following prompt appears on the display screen, it indicates that the refrigerator is faulty. Although the fridge/freezer of the refrigerator can still function under the following failure conditions, the user should contact maintenance personnel to ensure that the refrigerator is in good condition.


Fault code	Fault name
E1	Fridge temperature sensor fault
E2	Freezer temperature sensor fault
E5	Freezing and defrosting sensor fault
E6	Communication fault
E7	Ambient temperature fault
EH	Humidity fault
EE	Ice machine sensor fault
CA	Communication fault between the mainboard and ice making board
E0	Ice machine fault
EF	Alarm for abnormal placement of built-in water tank
EP	Ice machine off-ice fault
Ice cube mode indicator, water outlet mode indicator, ice crushing mode indicator and ice machine mode indicator flash simultaneously.	Communication fault between the distributor board and ice making board

### 3.4 Integrated machine for drinking water and ice making

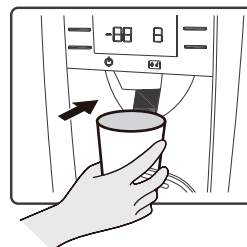
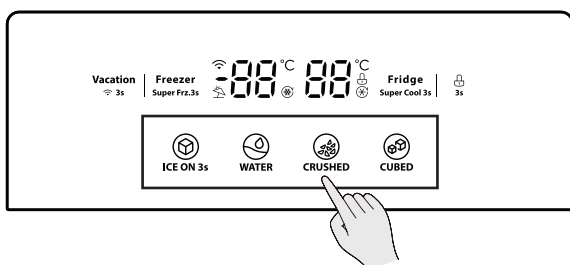
When the refrigerator is powered on, the icon  **ICE ON 3s** lights up, and the ice-making function is turned on by default. Press and hold the button  **ICE ON 3s** for **3s**, and the icon darkens, and the ice-making function is turned off.


#### 1) Take ice water



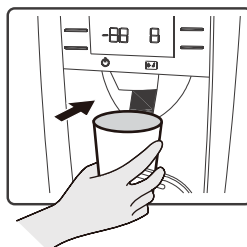
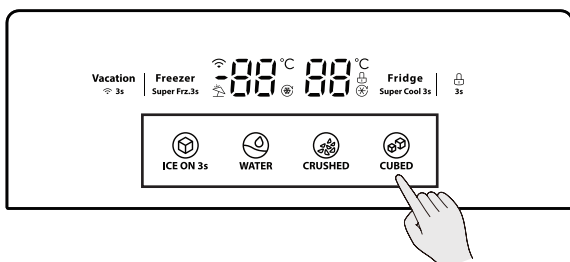
Press the button  **WATER** until the icon lights up, and then the ice water making mode is turned on; Push the container towards the pressing plate, and the ice water begins to flow into the container; After the container is separated from the pressing plate, the water outlet stops.


#### 2) Take crushed ice



Press the button  **CRUSHED** until the icon lights up, and then the ice crushing mode is turned on; Push the container towards the pressing plate, and the crushed ice begins to flow into the container; After the container is separated from the pressing plate, the crushed ice stops outflowing.

#### 3) Take ice cube



Press the button  **CUBED** until the icon lights up, and then the ice cube mode is turned on; Push the container towards the pressing plate, and the ice cube begins to fall into the container; After the container is separated from the pressing plate, the ice cube stops outflowing.

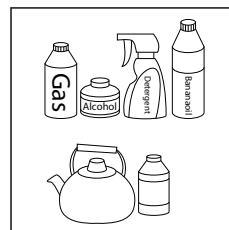


## 4. Maintenance and care of the refrigerator

---

### 4.1 Overall cleaning

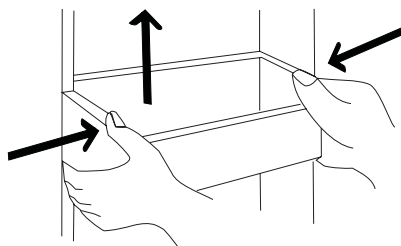
- Dusts behind the refrigerator and on the ground shall be timely cleaned to improve the cooling effect and energy saving.
- Check the door gasket regularly to make sure there are no debris. Clean the door gasket with a soft cloth dampened with soapy water or diluted detergent.
- The interior of the refrigerator should be cleaned regularly to avoid odor.
- Please turn off the power before cleaning interior, remove all foods, drinks, shelves, drawers, etc.
- Use a soft cloth or sponge to clean the inside of the refrigerator, with two tablespoons of baking soda and a quart of warm water. Then rinse with water and wipe clean. After cleaning, open the door and let it dry naturally before turning on the power.
- For areas that are difficult to clean in the refrigerator (such as narrow sandwiches, gaps or corners), it is recommended to wipe them regularly with a soft rag, soft brush, etc. and when necessary, combined with some auxiliary tools (such as thin sticks) to ensure no contaminants or bacteria accumulation in these areas.
- Do not use soap, detergent, scrub powder, spray cleaner, etc., as these may cause odors in the interior of the refrigerator or contaminated food.
- Clean the bottle frame, shelves and drawers with a soft cloth dampened with soapy water or diluted detergent. Dry with a soft cloth or dry naturally.
- Wipe the outer surface of the refrigerator with a soft cloth dampened with soapy water, detergent, etc., and then wipe dry.
- Do not use hard brushes, clean steel balls, wire brushes, abrasives (such as toothpastes), organic solvents (such as alcohol, acetone, banana oil, etc.), boiling water, acid or alkaline items, which may damage the fridge surface and interior. Boiling water and organic solvents such as benzene may deform or damage plastic parts.
- Do not rinse directly with water or other liquids during cleaning to avoid short circuits or affect electrical insulation after immersion.



**Please unplug the refrigerator for defrost and cleaning.**

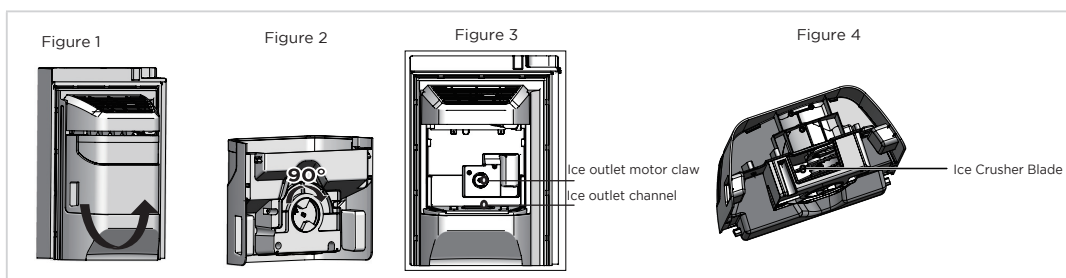
### 4.2 Cleaning of door tray

- According to the direction arrow in the figure below, use both hands to squeeze the tray, and push it upward, then you can take it out.
- After washing the tray having been taken out, you can adjust its installing height in accordance with your requirement.



## 4.3 Clean the Ice Container

Ice in the ice container may block the outlet because of lumping or other reasons. In this case the ice container needs cleaning or eliminating block.



1. When the ice on light goes out, hold the left and right clasps of the ice storage box with both hands, and move the ice storage box vertically to get it out of the limit buckle, and then slowly remove the ice storage box along the vertical door liner, as shown in Figure 1
2. Clean the ice storage box as needed. The installation process of the ice storage box is contrary to the removal process. Pull the ice storage box downwards forcefully until it is installed in place. If it is difficult to install the ice storage box, turn the turntable on the ice storage box 90° according to Figure 2, and then install the ice storage box.

### Normal phenomenon:

1. It is normal to hear a sound when the icemaker turns over ice to the ice storage box.
2. When the ice can not be discharged normally, check whether the ice outlet channel is blocked and remove it.
3. If the ice has not been removed for a long time, it may cause the ice to freeze into clumps in the storage box and become inaccessible outside the door.
4. In this case, the ice storage box needs to be cleaned and used again.
5. As there is air in the water supply waterway of the icemaker, the water injection rate for the first icemaking may be low, resulting in small ice cubes. However, during the normal use of the icemaker, the air in the pipeline will be emptied.

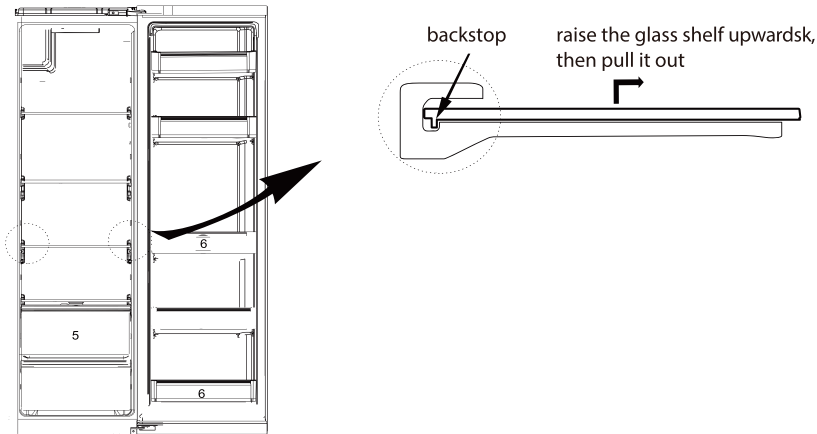
### Precautions:

1. When the door is opened, it will be impossible to take ice or water.
2. It is suggested that all the ice cubes in the first ice storage box should be emptied to ensure hygiene.
3. Hard opening and closing of the door may cause water in the ice tray of the ice maker to spill out.
4. To prevent the ice storage box from accidentally falling, please disassembling it with both hands.
5. To avoid personal injury, please clean up the water or ice that may spill on the ground. To avoid possible injuries to children, please do not allow children to touch the ice or the ice storage box.
6. Please do not put your hands or anything into the ice outlet, as shown in Figure 3. Otherwise, it may cause personal injury or damage to the parts of the ice storage box.
7. To avoid possible injuries, please do not touch the claw of the ice dispensing motor or the ice breaker with your hands, as shown in Figure 3 and Figure 4.
8. Please do not disassemble, repair or modify the ice maker. These tasks need to be completed by professional maintenance personnel.
9. Keep children away from the dispenser.
10. If the ice maker button is turned off, please empty the ice storage box.
11. If the ambient temperature is below zero, please ask the maintenance personnel to drain the water from the water supply system, so as to prevent property losses caused by water leakage caused by the rupture of water pipes or joints.

---

## 4.4 Cleaning of Glass shelf

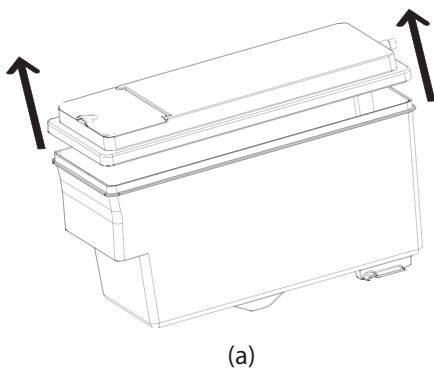
- As the innermost part of the refrigerator liner where contacting the shelves has a backstop, you shall raise the shelves upward, then you can be able to take it out.
- Adjust or clean the shelves according to your requirement.



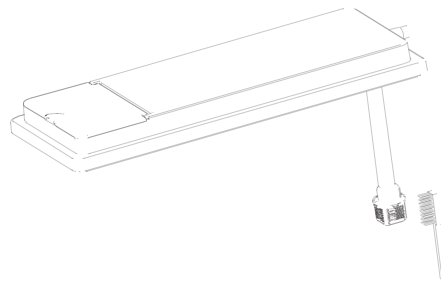
(The picture above is only for reference. The actual configuration will depend on the physical product or statement by the distributor)

## 4.5 Cleaning of Water Tank filter

- Remove the tank from the refrigerator and remove the lid of the tank in the direction of the arrow (a). clean filter with brush or other tools (b).



(a)



(b)

(The picture above is only for reference. The actual configuration will depend on the physical product or statement by the distributor)

---

## 4.6 Defrosting

- The refrigerator is made based on the air-cooling principle and thus has automatic defrosting function. Frost formed due to change of season or temperature may also be manually removed by disconnection of the appliance from power supply or by wiping with a dry towel.

## 4.7 Out of operation

- Power failure: In case of power failure, even if it is in summer, foods inside the appliance can be kept for several hours; during the power failure, the times of door opening shall be reduced, and no more fresh food shall be put into the appliance.
- Long-time nonuse: The appliance shall be unplugged and then cleaned; then the doors are left open to prevent odor.
- Moving: Before the refrigerator is moved, take all objects inside out, fix the glass partitions, vegetable holder, freezing chamber drawers and etc. with tape, and tighten the leveling feet; close the doors and fix them with tape. During moving, the appliance shall not be laid upside down or horizontally, or be vibrated; the inclination during movement shall be no more than 45°.



**The appliance shall run continuously once it is started. Generally, the operation of the appliance shall not be interrupted; otherwise the service life may be impaired.**

## 5. Trouble shooting

- You may try to solve the following simple problems by yourself. If them cannot be solved, please contact the after-sales department.

Occurrence	Possible cause/inspection items
Failed operation	Check whether the appliance is connected to power or whether the plug is in well contact Check whether the voltage is too low Check whether there is a power failure or partial circuits have tripped
Odor	Odorous foods shall be tightly wrapped Check whether there is any rotten food Clean the inside of the refrigerator
Long-time operation of the compressor	Long operation of the refrigerator is normal in summer when the ambient temperature is high It is not suggestible having too much food in the appliance at the same time Food shall get cool before being put into the appliance The doors are opened too frequently
Light fails to get lit	Check whether the refrigerator is connected to power supply and whether the illuminating light is damaged Have the light replaced by a specialist
Doors cannot be properly closed	The door is stuck by food packages Too much food is placed The refrigerator is tilted
Loud noise	Check whether the floor is level and whether the refrigerator is placed stably Check whether accessories are placed at proper locations
Door seal fails to be tight	Remove foreign matters on the door seal Heat the door seal and then cool it for restoration (or blow it with an electrical drier or use a hot towel for heating)
Water pan overflows	There is too much food in the chamber or food stored contains too much water,resulting in heavy defrosting The doors are not closed properly, resulting in frosting due to entry of air and increased water due to defrosting
Hot housing	Heat dissipation of the built-in condenser via the housing, which is normal When housing becomes hot due to high ambient temperature, storage of too much food or shutdown of the compressor is shut down, provide sound ventilation to facilitate heat dissipation
Surface condensation	Condensation on the exterior surface and door seals of the refrigerator is normal when the ambient humidity is too high. Just wipe the condensate with a clean towel.
Abnormal noise	Buzz: The compressor may produce buzzes during operation, and the buzzes are loud particularly upon start or stop. This is normal. Creak: Refrigerant flowing inside of the appliance may produce creak, which is normal.
No water or ice	The sealing cap is not took out or the water tank is not installed right.

## 6. Disposal of your appliance

---



Correct disposal of this product:

This marking indicates that this product should not be disposed with other household wastes throughout the EU. To prevent possible harm to the environment or human health from uncontrolled waste disposal, recycle it responsibly to promote the sustainable reuse of material resources. To return your used device, please use the return and collection systems or contact the retailer where the product was purchased. They can take this product for environmental safe recycling.

### AMBIENT TEMPERATURE

This appliance is designed to operate in ambient temperature specified by its category marked on the rating plate.

Climate category	Ambient temperature (from...to...)
SN	+10°C to +32°C
N	+16°C to +32°C
ST	+16°C to +38°C
T	+16°C to +43°C