

# TOSHIBA

## TOSHIBA APP AND SMART HOME SKILLS USER MANUAL

Android QR code



Apple QR code



### IMPORTANT NOTE

Read the manual carefully before installing or connecting your air conditioner. Make sure to save this manual for future reference.

Table of Contents

NETWORK CONFIGURATION ..... 3

HOW TO USE THE APP ..... 11

SPECIAL FUNCTIONS ..... 14

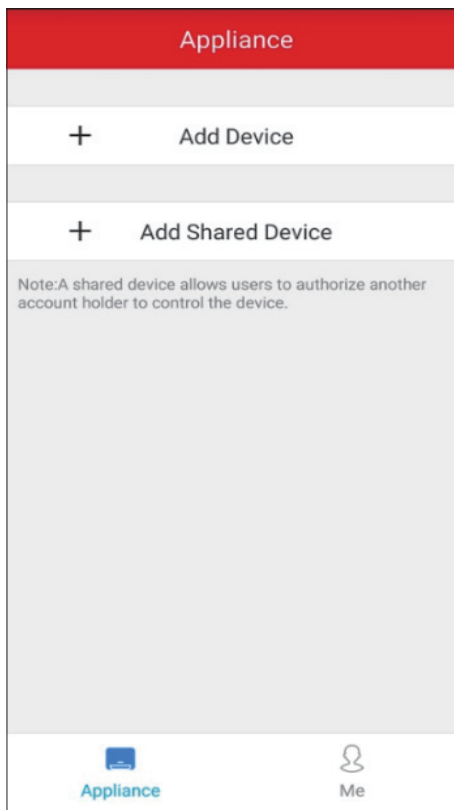
AMAZON ALEXA CONNECTION INSTRUCTIONS ..... 17

GOOGLE HOME CONNECTION INSTRUCTIONS ..... 21

---

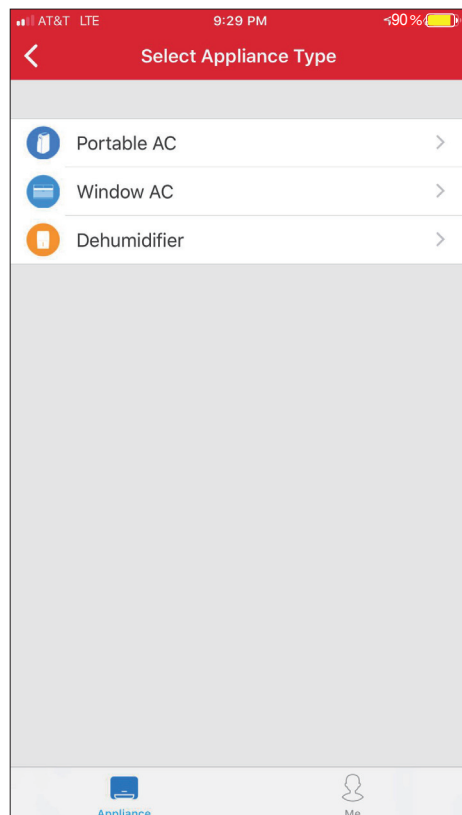
## NETWORK CONFIGURATION

1. Log in with your account.
2. Use “+ Add Device” to add appliances.

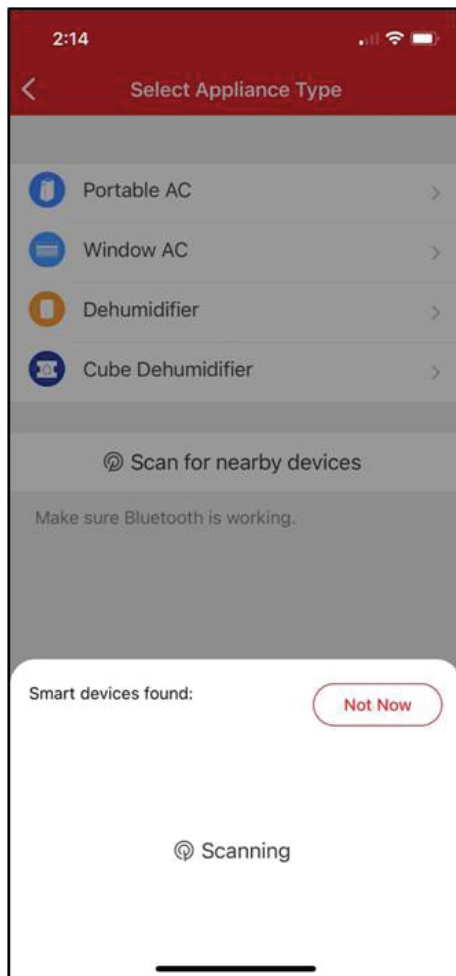


3. Connect your device to Wireless.

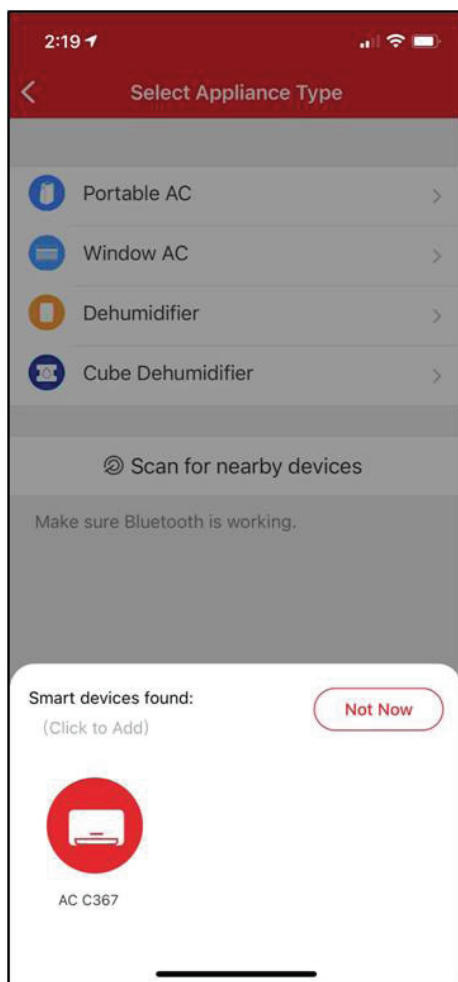
3.1 Connect your device using Bluetooth:



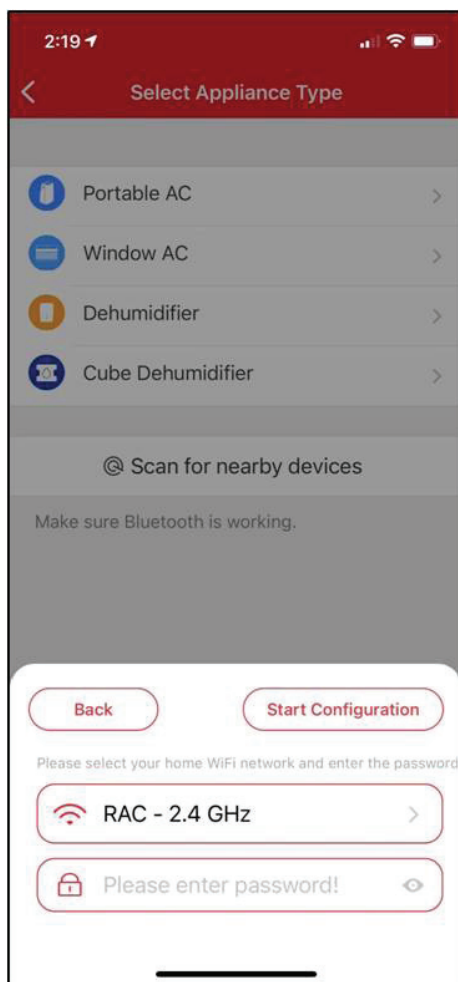
3.1.1 Select Scan for nearby devices.



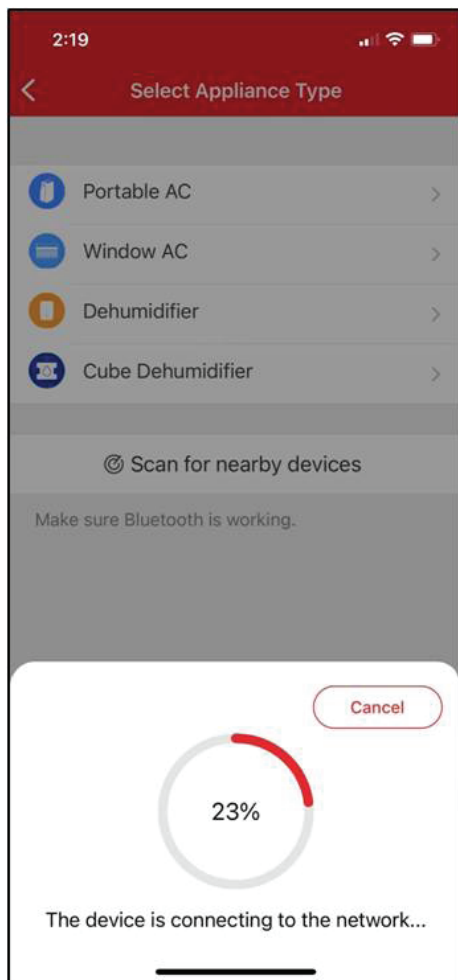
3.1.2 Turn the device on, then press and hold the Connect (Window AC), Swing (Portable AC), Filter (Dehumidifier), or Power (Cube Dehumidifier) button for 3 seconds or until the display shows AP.



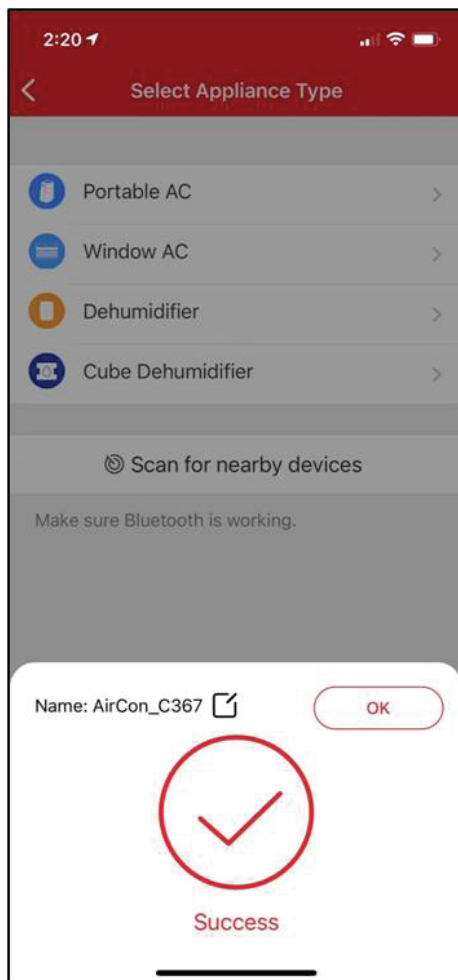
3.1.3 When your device appears, tap the icon to select the device. If multiple devices appear, you can identify your device by checking that the last 4 digits under the icon match the last 4 digits on the QR code sticker on the unit.



3.1.4 Select your desired wireless network and enter the password. When finished press "Start Configuration".

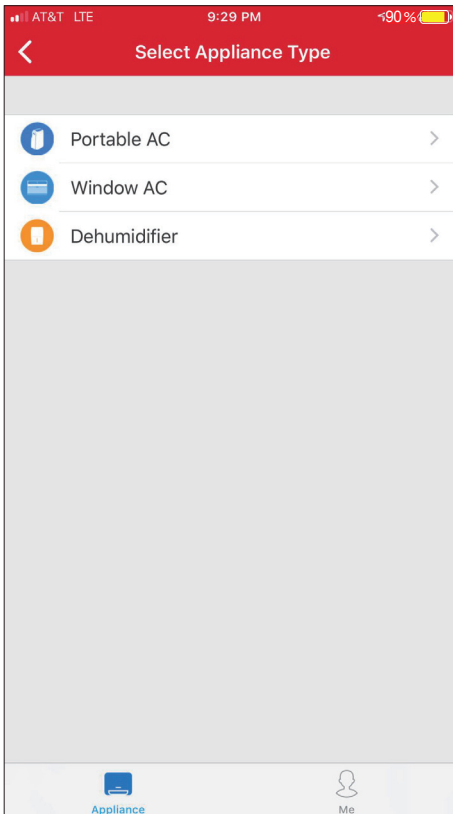


3.1.5 Wait for your device to connect to the network.

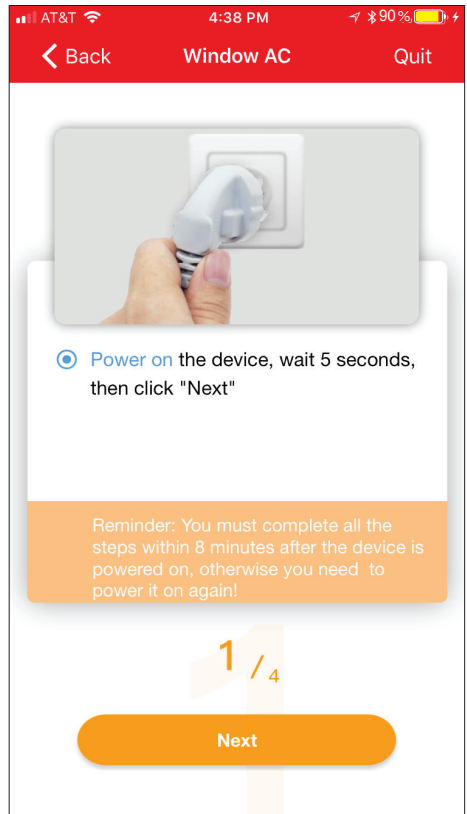


3.1.6 Once the device connects you can edit the name or press OK to finish the connection process.

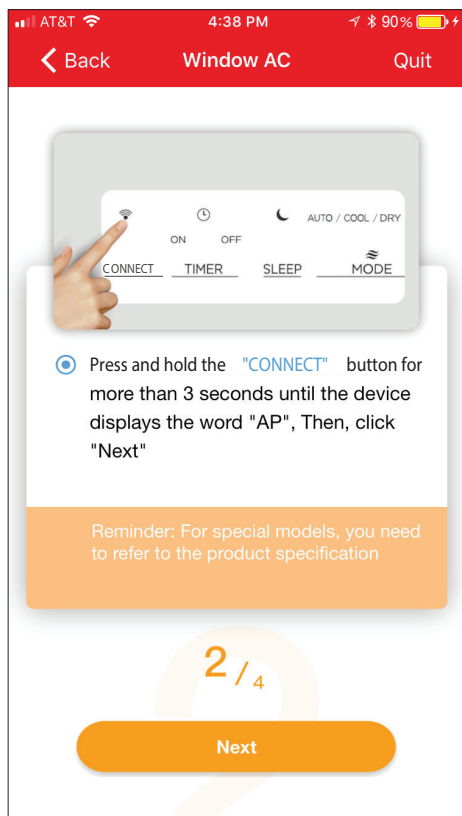
### 3.2 Manually connect your device:



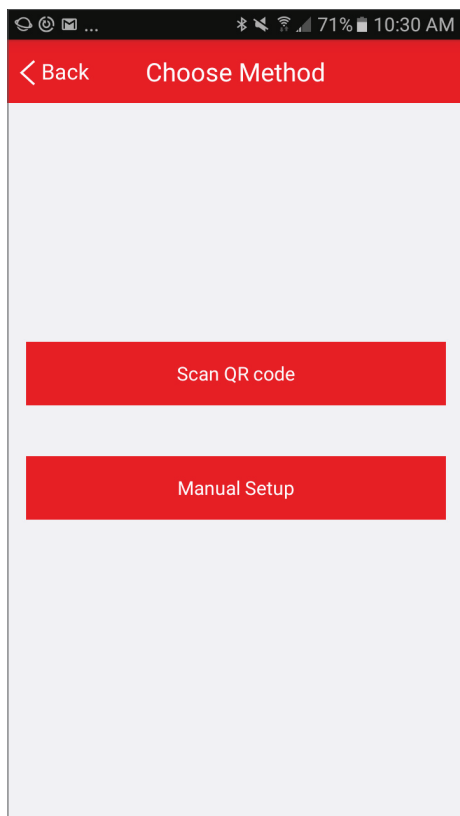
#### 3.2.1 Select your device type.



#### 3.2.2 Turn the device on, then wait 5 seconds before continuing.

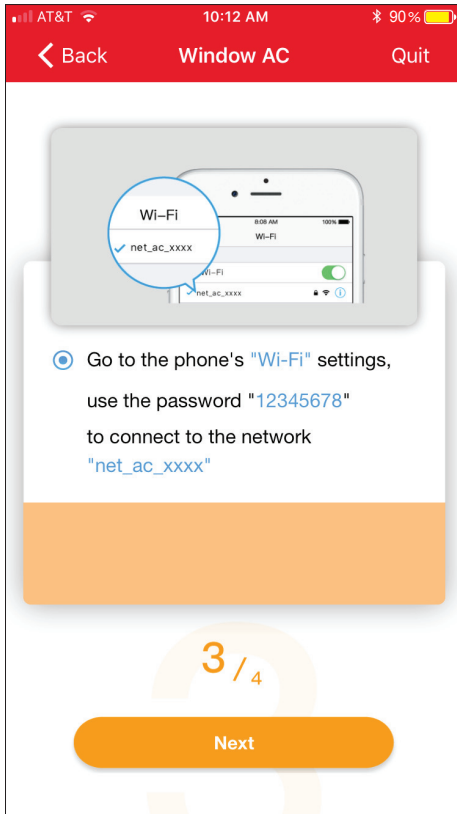


3.2.3 Press and hold the Connect (Window AC), Vent Angle/Swing (Portable AC), or Filter (Dehumidifier) buttons for 3-5 seconds. The unit will enter Access Point mode and the display will show "AP".

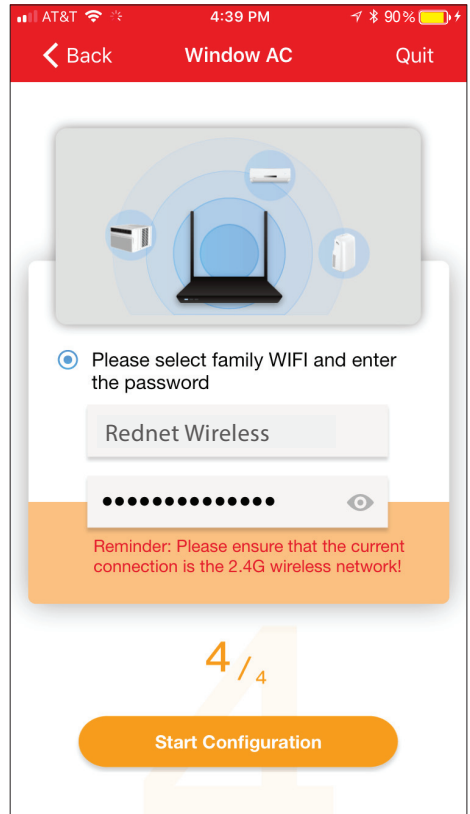


3.2.4 For Android devices, you may choose to scan the QR code on the air conditioner for setup. If not using a QR code, or if you are using an iOS device, select Manual Setup.





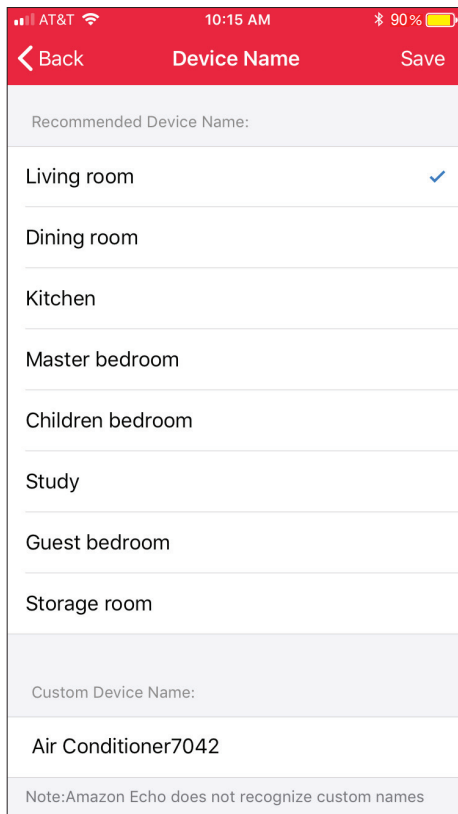
3.2.5 Go to your phone's wireless network settings, connect to the network named "net\_ac\_xxxx", (where each x is some number, 0-9 or letter, A-F) and use the password "12345678".



3.2.6 Return to the "Toshiba" App, select your preferred 2.4 GHz wireless network, and type in your password. Then press "Start Configuration".



3.2.7 The app will show you the progress. If there is a failure, please check your network settings and unit and try again.



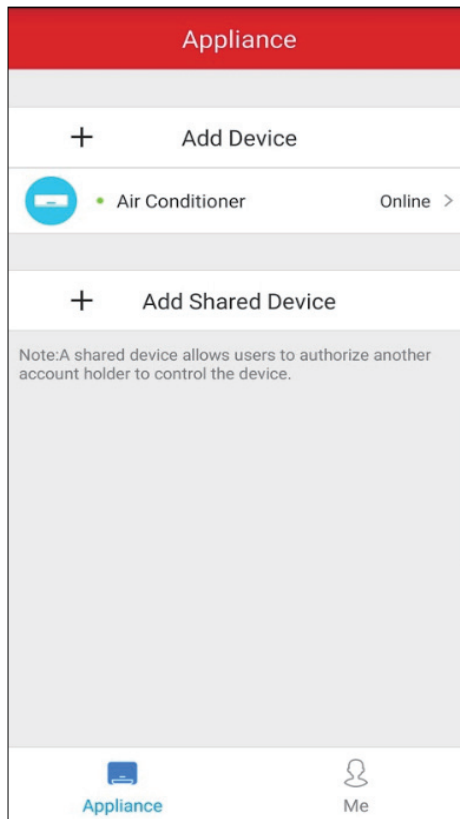
3.2.8 Name your unit.

## NOTICE

- When finishing network configuration, the app will indicate success by displaying a message.
- In unstable network connections, the products may still appear on the app as “offline”. If this happens, wait for it to show up on the device list or turn the air conditioner’s power off. After 30 seconds, turn the unit back on and wait a few minutes before checking again. If the unit is still offline, try the pairing process again.

## HOW TO USE THE APP

Log in and select your unit to control it from wherever you are, using your smart phone.



### SHARED DEVICE SETUP:

You can also add a shared device from another user account using the "+ Add Shared Device". Then, scan the QR Code generated on the other users app through the device settings. Both accounts should now be able to control the device using their own accounts.

## Using the App

### Air Conditioner Display

#### NOTICE

- Every function may not be supported by your model. Please refer to your product's user manual for more details.
- Additional functions can be accessed if you swipe up on the bottom menu.

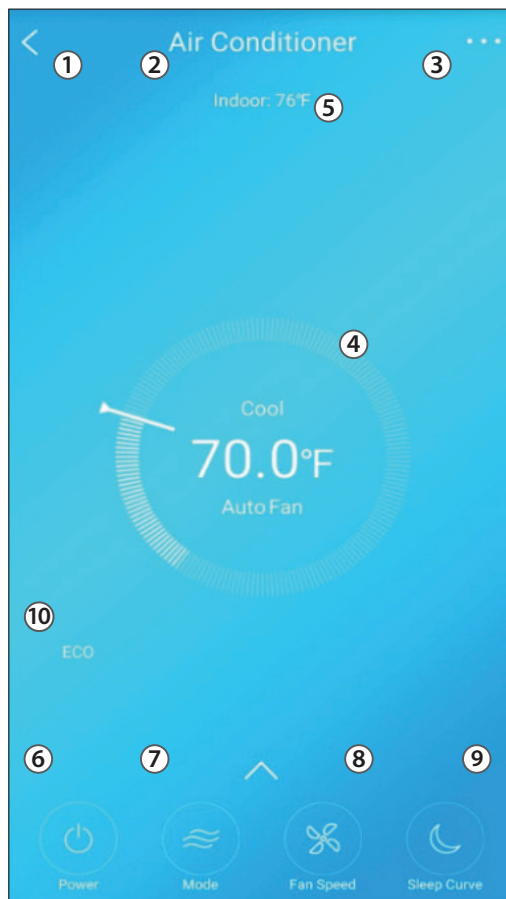
①  
**BACK ARROW:**  
Use this arrow to take you back to the main screen.

②  
**UNIT NAME:**  
This is the name of the unit you are currently controlling.

③  
**FUNCTION:**  
Use this button to access functions such as express run, sleep curve, and schedule.

④  
**TEMPERATURE AND MODE DISPLAY:**  
This display shows what temperature and mode the air conditioner is set to.

⑤  
**TEMPERATURES:**  
This display shows the current temperature readings at the unit.



⑥  
**POWER:**  
Use this button to turn the unit on and off.

⑦  
**MODE:**  
Use these buttons to switch between modes. Modes may include: Auto, Cool, Dry, Fan, and Heat. The background color will also change based on the current mode.

⑧  
**FAN SPEED:**  
Use this button to switch between fan speeds. Fan speeds include: AUTO, LOW, MEDIUM, and HIGH.

⑨  
**SLEEP CURVE:**  
Use this button to turn the SLEEP CURVE mode on and off.

⑩  
**ECO:**  
Use this button to turn Eco Mode on and off.

---

## NOTICE

Depending on your device type, you may see different functions within the device screen. Below are descriptions of all the functions. Be advised, not all functions are available on all devices. Only the functions displayed on the device's in app screen are available for that device.

### Air Conditioner Functions

**Power:** Toggles the unit On/Off

**Fan Speed:** Changes the Fan speed between the supported speeds

**Express Run:** Changes the unit's settings to a user pre-set point

**ECO:** Toggles the ECO function On/Off. For details on the Eco function, see the full user manual.

**Sleep Curve:** Toggles the Sleep Curve mode On/Off. For detailed information about setting the sleep curve, see the special functions section below.

**LED:** Toggles the LED display on the unit On/Off. Note that even when the LED display is turned off, changing the unit's settings will illuminate the display for a short period of time

**Sound:** Toggles the beep the unit plays when it receives a command On/Off.

**Schedules:** Toggles the Schedule function On/Off. For detailed information about setting the schedules see the special functions section below.

**Horizontal Swing:** Toggles the swing function On/Off. When swing is on, the outlet louvers will oscillate.

**Direction:** Allows the user to set the angle of the outlet louvers to one of five settings.

SPECIAL FUNCTIONS

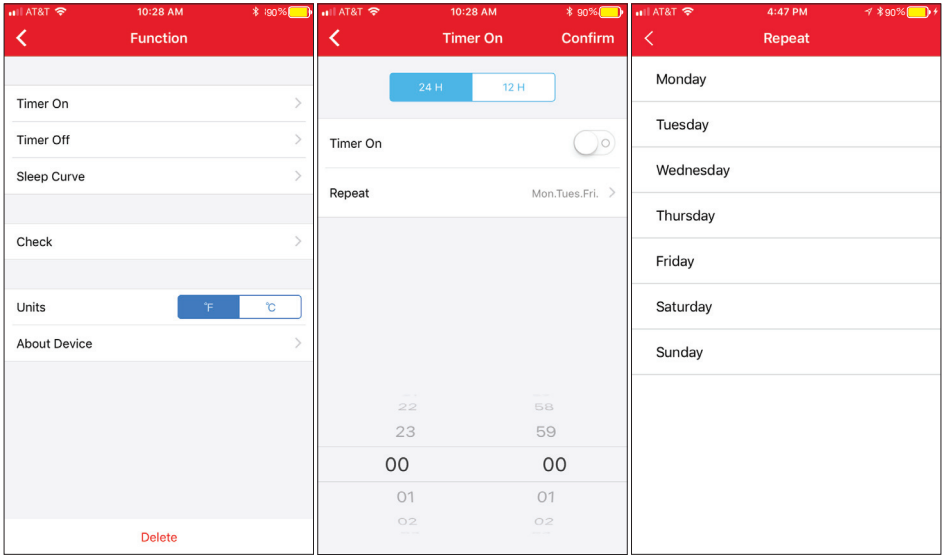
Functions on this page may include: Schedules/Timer On/Off, Sleep Curve, Check, and Share Device.

NOTICE

- Not all models display all functions. Please check your product’s user manual for more details. If a function is not available, it will not be displayed on the function list in the app.
- Additional functions may also be added to this screen in the future by Toshiba’s developers.

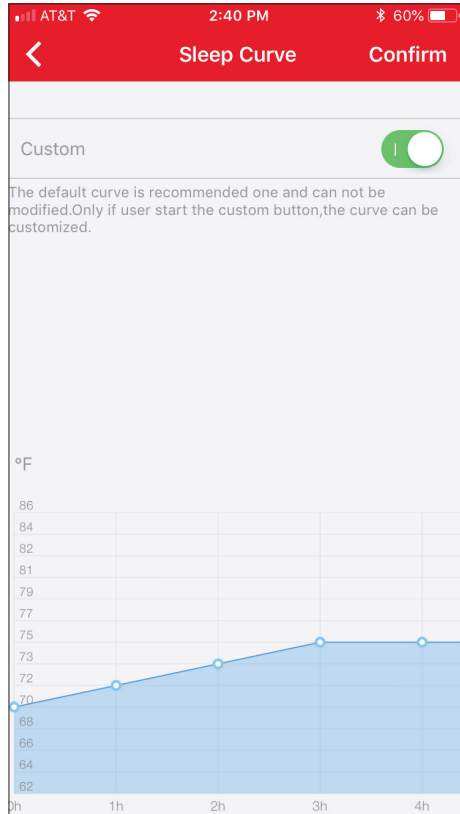
Schedule/Timer On/Off

With this function, you can manually select what time you would like your device to turn on/off. Additionally, you can select which days you would like the timer to apply to.



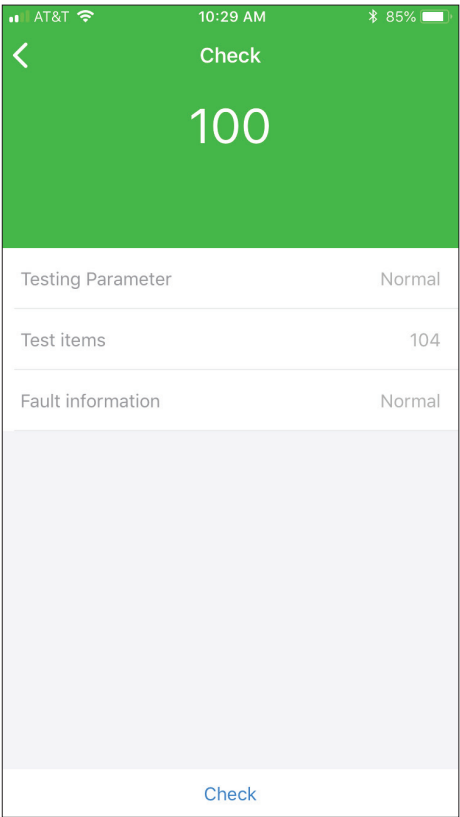
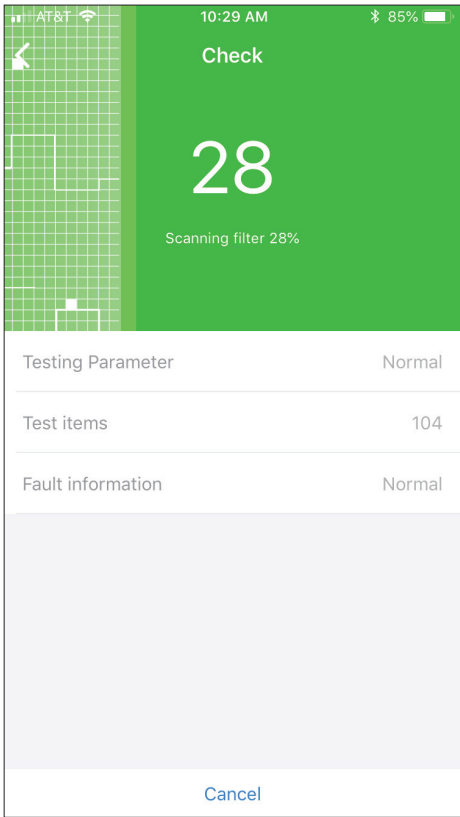
## Customized Sleep Curve

With this function, you can customize your air conditioner's settings for each hour that you are asleep. Scroll left and right to adjust up to 8 hours of the sleep curve.



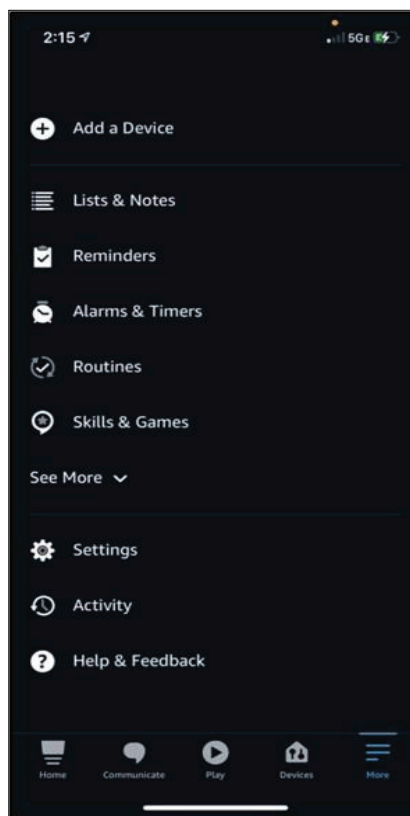
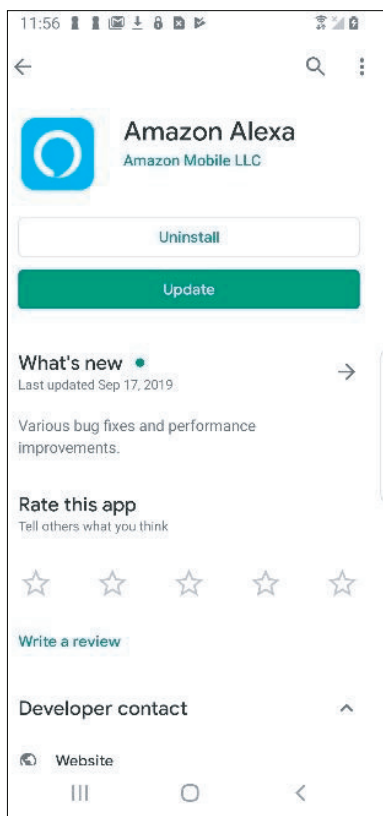
Self Diagnosis - "Check" Function

With this function, you can run a self-diagnosis. The app will show a report on key items and their status.

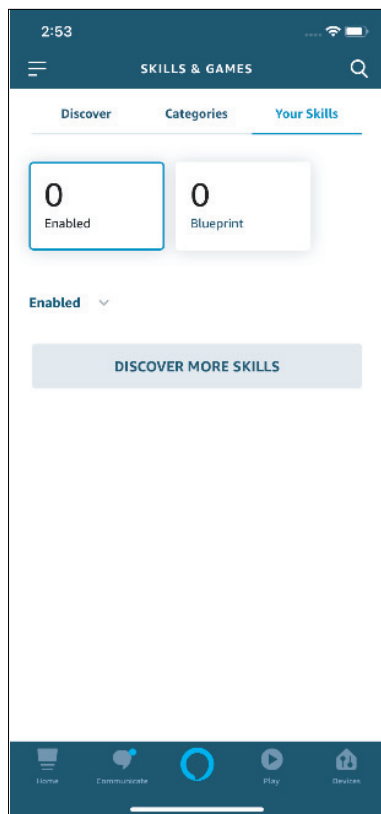
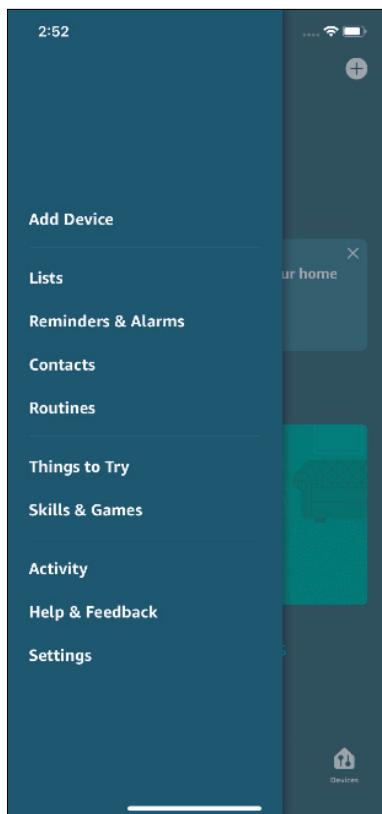




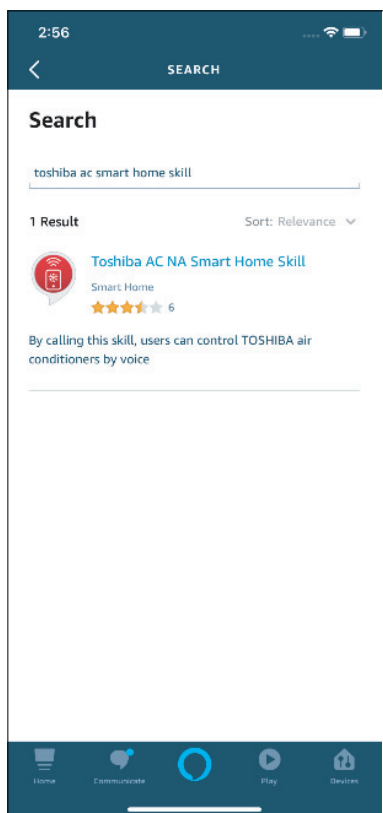
## AMAZON ALEXA CONNECTION INSTRUCTIONS



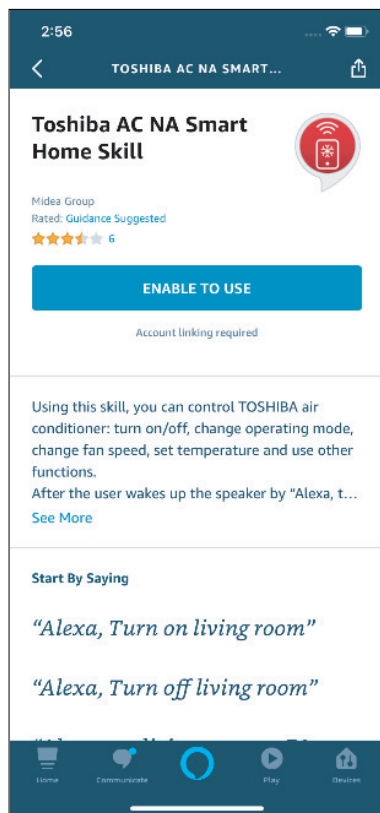
1. Make sure your AC unit is connected to your Toshiba AC NA account.
2. Download the Amazon Alexa app from your compatible App Store.
3. Once you see the above screen, navigate to and select the skills and games section under the more tab.
4. Select the side menu button in the top left-hand corner of the screen.



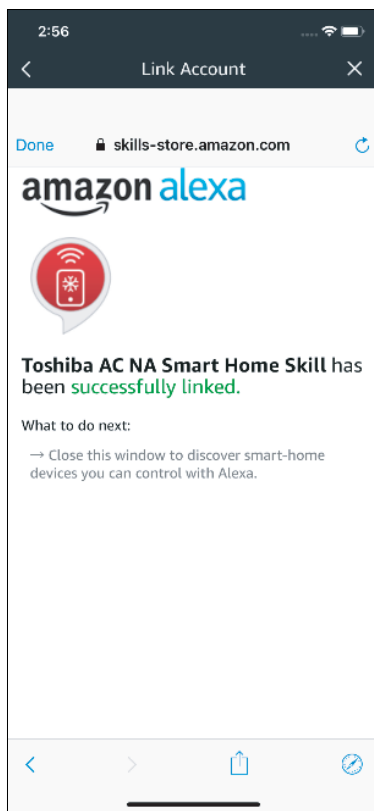
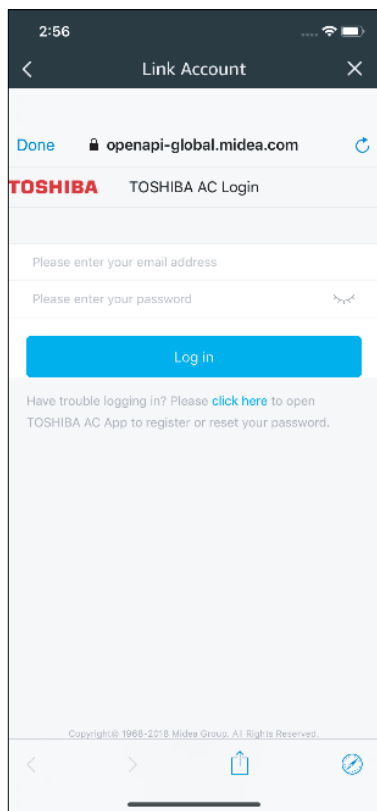
5. On the side menu, select the "Skills and Games" button.
6. Tap the search icon in the top right-hand corner of the screen.



7. Search for "Toshiba AC NA Smart Home Skill" in the search bar.



8. Select "Enable to Use".



9. Enter your Toshiba AC NA credentials into the "Link Account" tab.
10. Click "Close" and follow the in-app instructions to finish setting up your device(s) with Alexa.

## COMMAND EXAMPLES FOR YOUR AMAZON ALEXA AC:

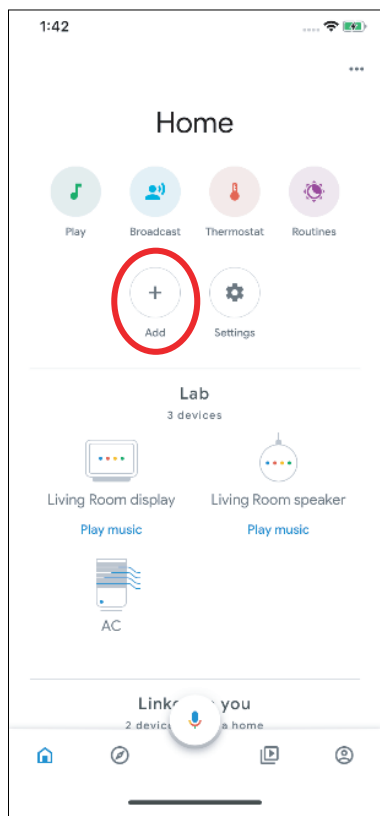
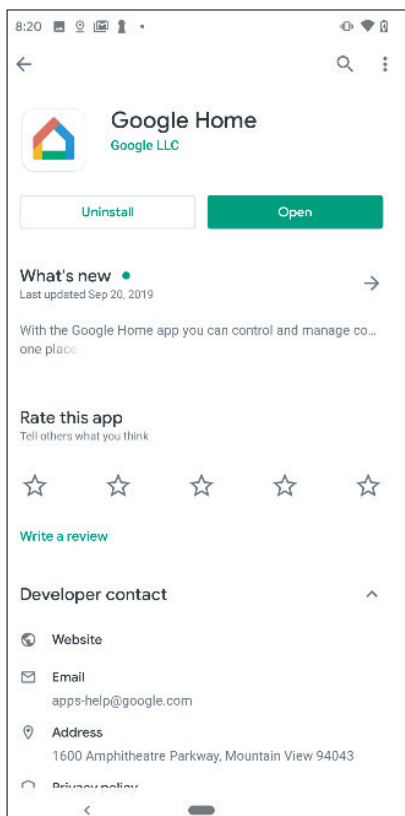
To help get familiar with using your Amazon Alexa connected AC, here are some example commands to help get you started:

"Alexa, turn on (given name of AC)."

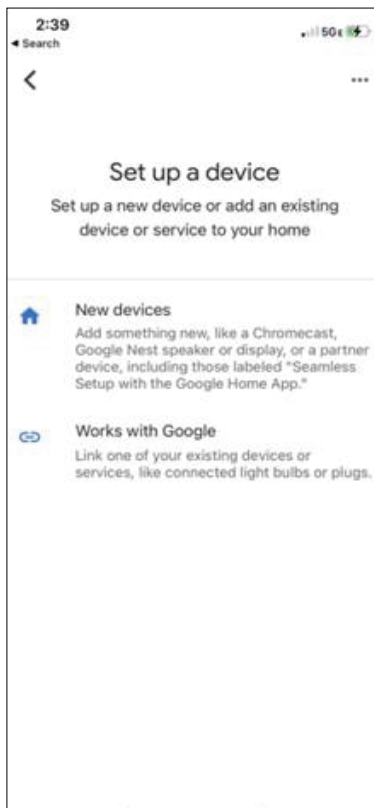
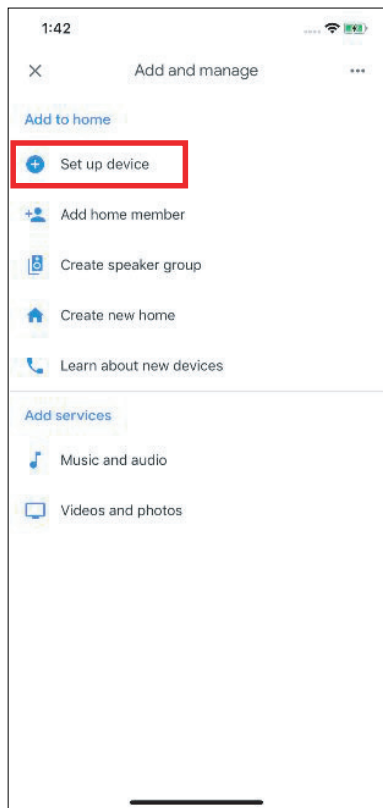
"Alexa, set (given name of AC) mode to cool."

"Alexa, set (given name of AC) temperature to 70."

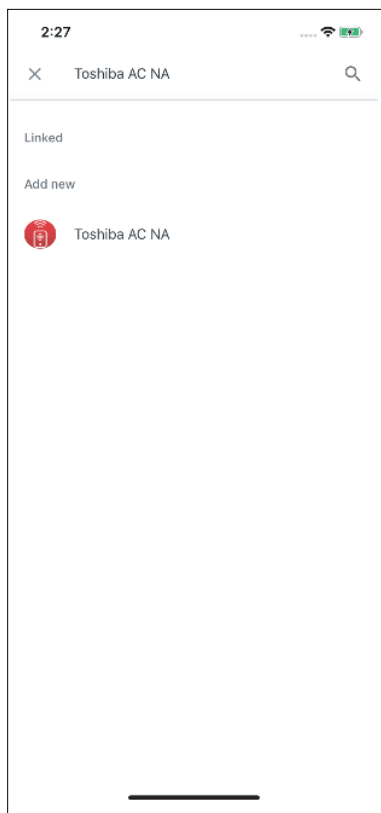
## GOOGLE HOME CONNECTION INSTRUCTIONS



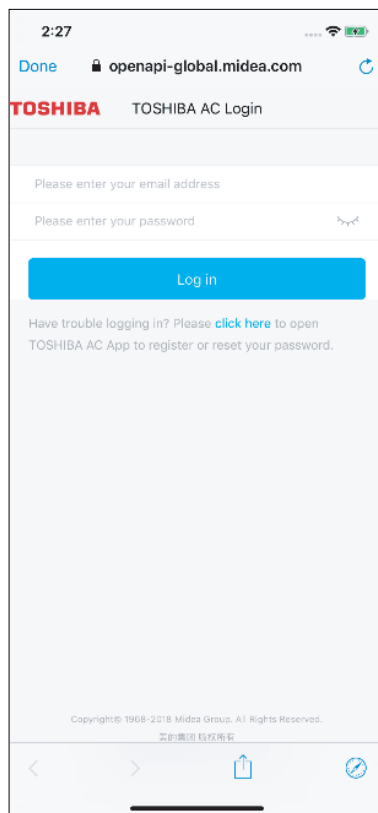
1. Make sure your AC unit is connected to your Toshiba AC NA account.
2. Download the Google Home app from your compatible App Store.
3. Sign in or create your Google account.
4. Select the plus to begin setting up your device.



5. Under "Add to Home", select "Set up Device".
6. Select Works with Google.



7. Select search option in top right-hand corner of the screen and search for Toshiba AC NA.



8. Select Toshiba AC NA, enter your login credentials, and authorize Google to access your smart device. Follow the in app instructions to finish setting up your device(s) with Google.

## COMMAND EXAMPLES FOR YOUR GOOGLE HOME AC:

To help get familiar with using your Google Home connected AC, here are some example commands to help get you started:

"Ok Google, turn on (given name of AC unit)"

"Ok Google, change (given name of AC unit) mode to Auto"

"Ok Google, change (given name of AC unit) temperature setting to 70 degrees"

"Ok Google, set (given name of AC unit) to high"

*Tip: All commands work for multiple units if you say "all air conditioners" instead of the specific name of one individual unit.*

**TOSHIBA**